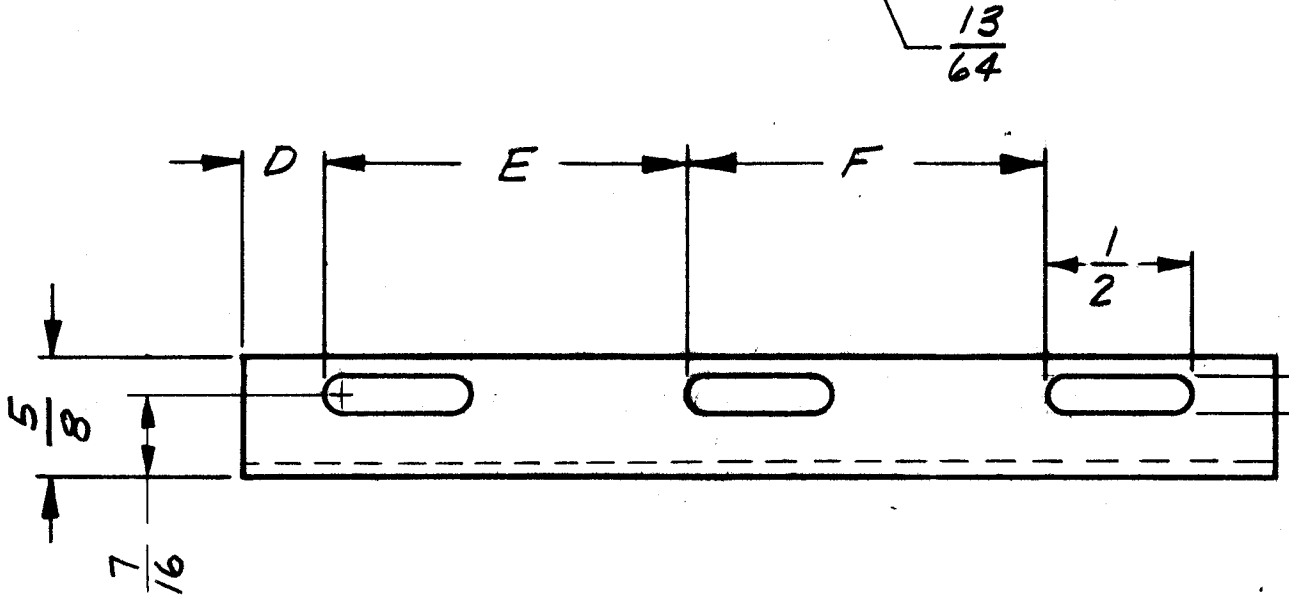
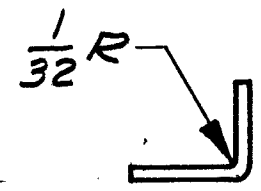
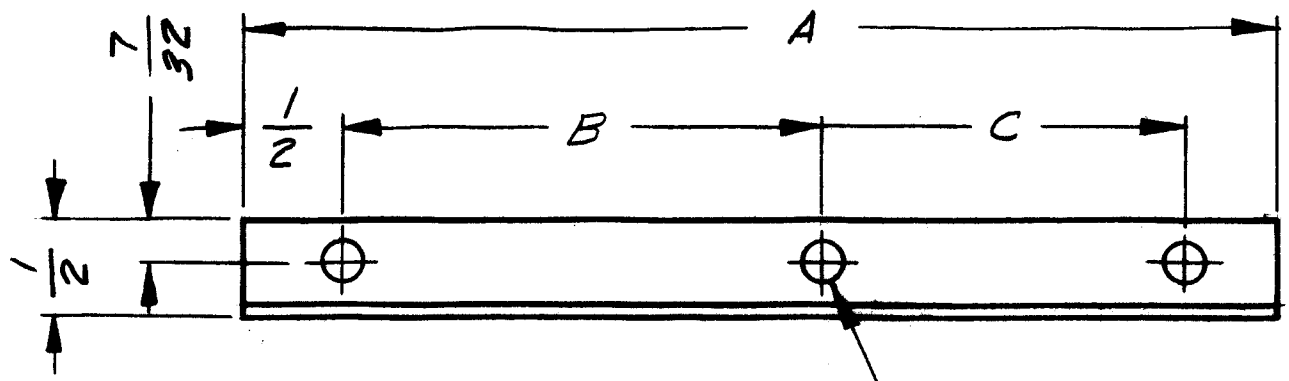


REVISIONS							
ZONE	LTR	DESCRIPTION	DATE	E.M.N.NO	DRAFT	CHKD	APPD
	X1	CHG SLOT DIM.	12-20-67		GEZ		



DWG. NO.	QTY	DIM. A	DIM. B	DIM. C	DIM. D	DIM. E	DIM. F	USED/ON
MS8115-1	2	3 1/2	2.500	NONE	7/16	1 7/8	NONE	AX8005
MS8115-2	4	7 1/2	3.250	3.250	7/16	2 15/16	2 15/16	AX8006

4	AX8006	
2	AX8005	
QTY / UNIT	MODEL USED ON	ASS'Y NO.
APPLICATION		
	CODE	
NOTICE TO PERSONS RECEIVING THIS DRAWING THE TECHNICAL MATERIEL CORPORATION claims proprietary right in the material disclosed hereon. This drawing is issued in confidence for engineering information only and may not be reproduced or used to manufacture anything shown hereon without permission from THE TECHNICAL MATERIEL CORPORATION to the user. This drawing is loaned for mutual assistance and is subject to recall at any time.		

UNLESS OTHERWISE SPECIFIED DIMENSIONS ARE IN INCHES AND INCLUDE CHEMICALLY APPLIED OR PLATED FINISHES

DECIMALS: .X ± .05, .XX ± .01, .XXX ± .005
 FRACTIONS: 1/64
 TOLS. ANGLES: 0° - 30'

MATERIAL: 064 5052 H32 ALUM

FINISH: S404 IRIDITE

REQ'D	ITEM	PART NUMBER	DESCRIPTION	SYM.
LIST OF MATERIAL				
FINAL APPROVAL: <i>SAM</i> DATE: 12-20-67 MECH. DES. DATE: ELECT. DES. DATE: CHECKED: <i>BMO</i> DATE: 12-29-67 DRAWN: G.E. ZUCKER DATE: 12-7-67				
THE TECHNICAL MATERIEL CORP. MAMARONECK, NEW YORK BRACKET, MOUNTING UNIVERSAL				
SIZE	CODE IDENT. NO.	DWG NO.	ISSUE	
B	82679	MS 8115	Ø	
SCALE	SHEET		OF	