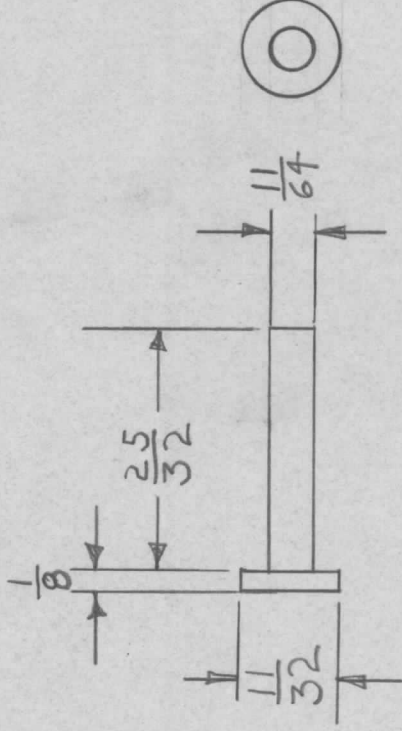


APPLICATION

REVISIONS

QTY	MODEL USED ON	ASSY NO.	LTR	DESCRIPTION	DATE	E.M.N.NO	DRAFT	CHKD	APPD
-----	---------------	----------	-----	-------------	------	----------	-------	------	------



UNLESS OTHERWISE SPECIFIED DIMENSIONS ARE IN INCHES AND INCLUDE CHEMICALLY APPLIED OR PLATED FINISHES		4		USE ON FIELD ANT PANEL		SYM.		
DECIMALS .X ± .05 .XX ± .01 .XXX ± .005	FRACTIONS 1/64	TOLS.	ANGLES 0° - 30'	REQ'D ITEM	PART NUMBER	DESCRIPTION		
MATERIAL STEEL				LIST OF MATERIAL				
FINISH NICKEL PLATE				THE TECHNICAL MATERIEL CORP. MAMARONECK, NEW YORK				
NOTICE TO PERSONS RECEIVING THIS DRAWING THE TECHNICAL MATERIEL CORPORATION claims proprietary right in the material disclosed hereon. This drawing is issued in confidence for engineering information only and may not be reproduced or used to manufacture anything shown hereon without permission from THE TECHNICAL MATERIEL CORPORATION to the user. This drawing is loaned for mutual assistance and is subject to recall at any time.				INTERLOCK PLUNGER				
FINAL APPROVAL L. NOTARANGELO		DATE 11/17/67		SIZE A		CODE IDENT. NO. DWG NO. 82679 MS 8071		
MECH. DES. L. NOTARANGELO		DATE 11/17/67		SCALE		SHEET OF		
ELECT. DES.		DATE		ISSUE		Ø		
CHECKED		DATE						
DRAWN L. NOTARANGELO		DATE 11/17/67						

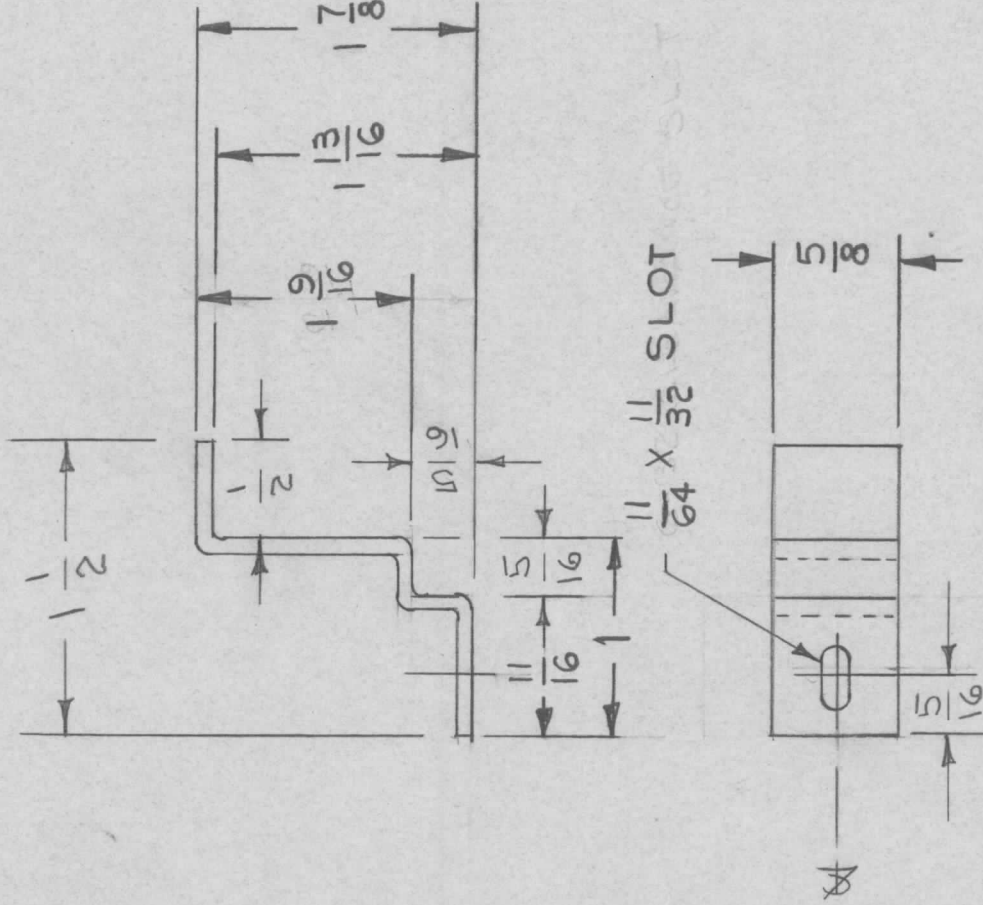
APPLICATION

QTY MODEL USED ON ASS'Y NO. LTR

9 BA-71 13

REVISIONS

DESCRIPTION DATE E.M.N.NO DRAFT CHKD APPD

UNLESS OTHERWISE SPECIFIED
DIMENSIONS ARE IN INCHES
AND INCLUDE CHEMICALLY APPLIED
OR PLATED FINISHESDECIMALS
.X ± .05
.XX ± .01
.XXX ± .005FRACTIONS
 $\frac{1}{64}$
ANGLES
 $0^\circ-30'$ MATERIAL .064 THK.
5052 H32 ALUMFINISH
SAO4 IRIDITE

REQ'D ITEM

PART NUMBER

DESCRIPTION

SYM.

LIST OF MATERIAL

FINAL APPROVAL

DATE

MECH. DES.

DATE

ELECT. DES.

DATE

CHECKED

DATE

DRAWN

DATE

THE TECHNICAL MATERIEL CORP.

MAMARONECK, NEW YORK

BATT TIE DOWNS

NOTICE TO PERSONS RECEIVING THIS DRAWING

THE TECHNICAL MATERIEL CORPORATION claims proprietary right in the material disclosed hereon. This drawing is issued in confidence for engineering information only and may not be reproduced or used to manufacture anything shown hereon without permission from THE TECHNICAL MATERIEL CORPORATION to the user. This drawing is loaned for mutual assistance and is subject to recall at any time.

SIZE

A

CODE IDENT. NO.

82679

DWG NO.

MS 8074

ISSUE

φ

SCALE

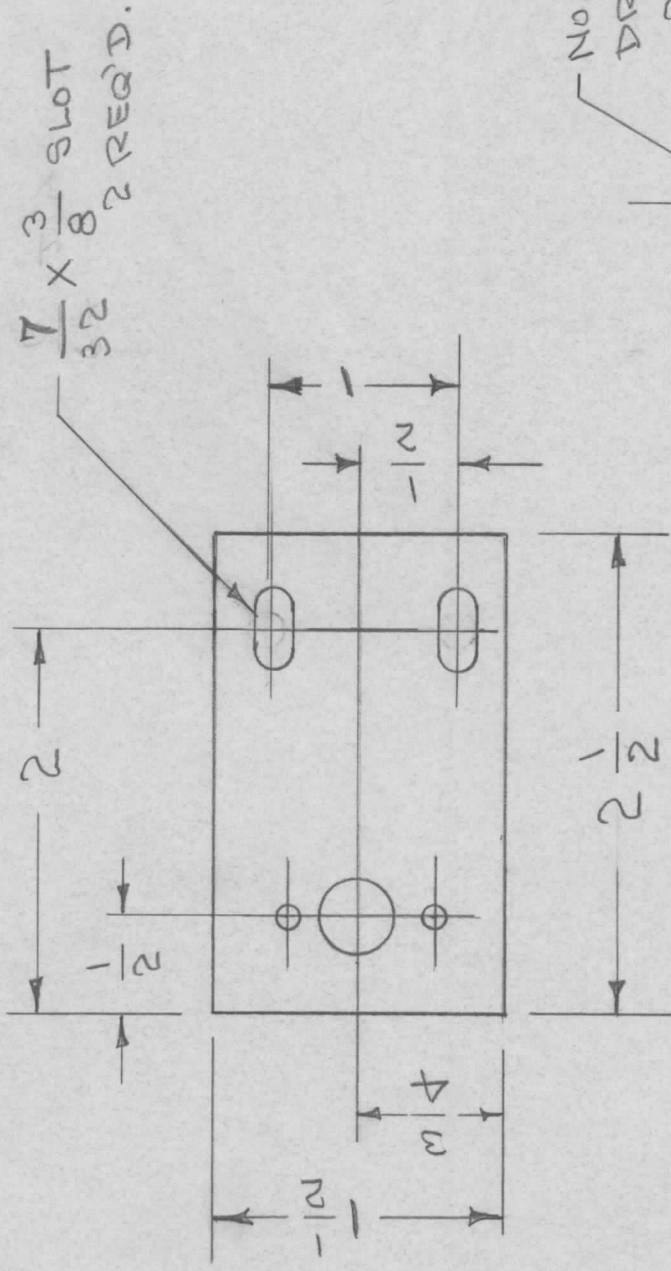
SHEET

OF

APPLICATION

REVISIONS

QTY	MODEL USED ON	ASSY NO.	LTR	DESCRIPTION	DATE	E.M.N.NO	DRAFT	CHKD	APPD
1	AX800Z								



UNLESS OTHERWISE SPECIFIED DIMENSIONS ARE IN INCHES AND INCLUDE CHEMICALLY APPLIED OR PLATED FINISHES	DECIMALS	FRACTIONS	REQ'D ITEM	PART NUMBER	DESCRIPTION	SYM.
	.X ± .05 .XX ± .01 .XXX ± .005	1/64 ANGLES 0° - 30'				
MATERIAL .081 THK 5052 H32 ALUMINUM	FINAL APPROVAL <i>S. ORLANDI</i>	DATE 12-13-67			LIST OF MATERIAL	
FINISH S404 IRIDITE	MECH. DES. ELECT. DES.	DATE DATE				THE TECHNICAL MATERIEL CORP. MAMARONECK, NEW YORK
NOTICE TO PERSONS RECEIVING THIS DRAWING THE TECHNICAL MATERIEL CORPORATION claims proprietary right in the material disclosed hereon. This drawing is issued in confidence for engineering information only and may not be reproduced or used to manufacture anything shown hereon without permission from THE TECHNICAL MATERIEL CORPORATION to the user. This drawing is loaned for mutual assistance and is subject to recall at any time.			DOOR STOP & FASTENER 24 HR CLOCK T7A		SIZE A	ISSUE φ
			CODE IDENT. NO. 82679		DWG NO. MS8085	
			SCALE		SHEET	OF