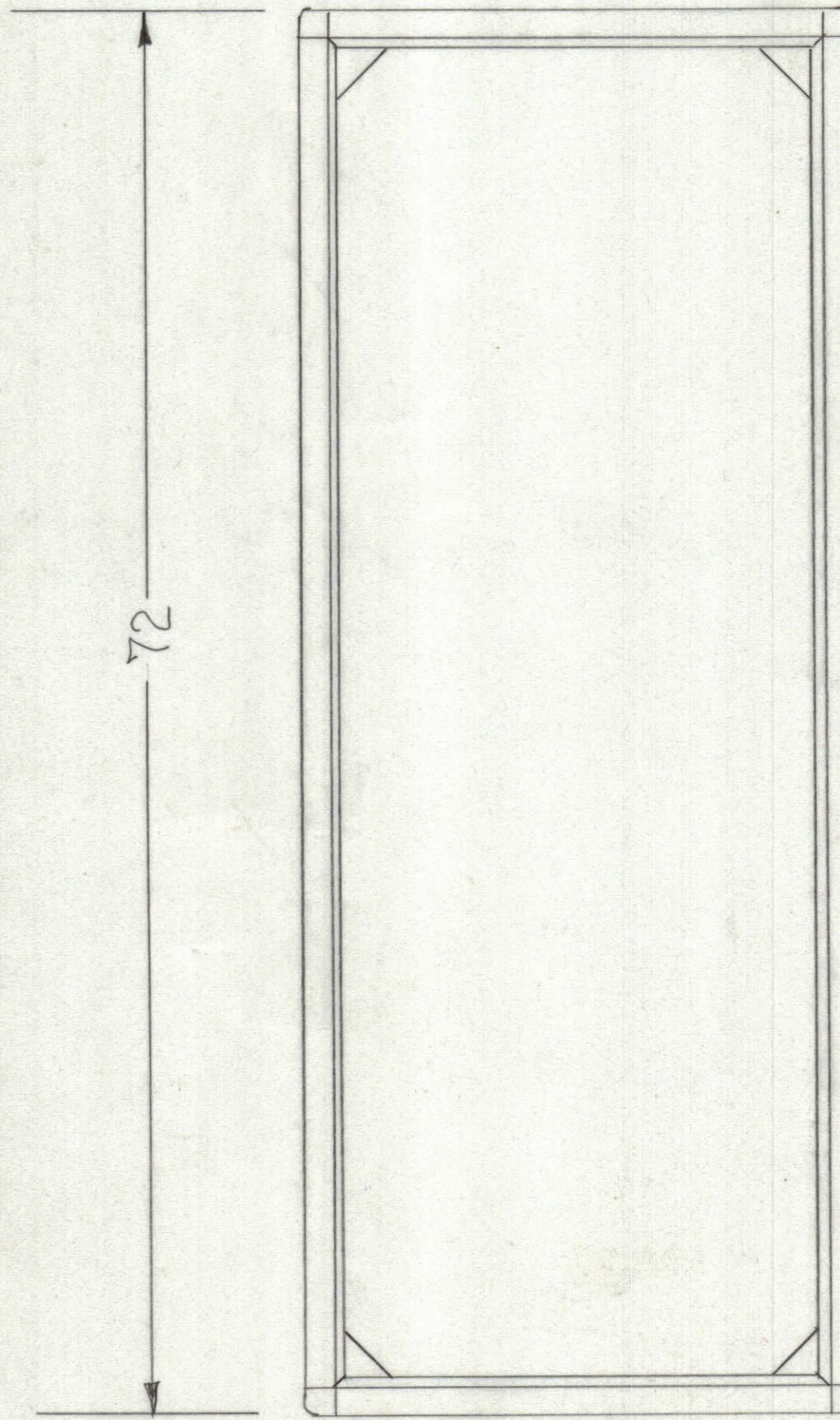
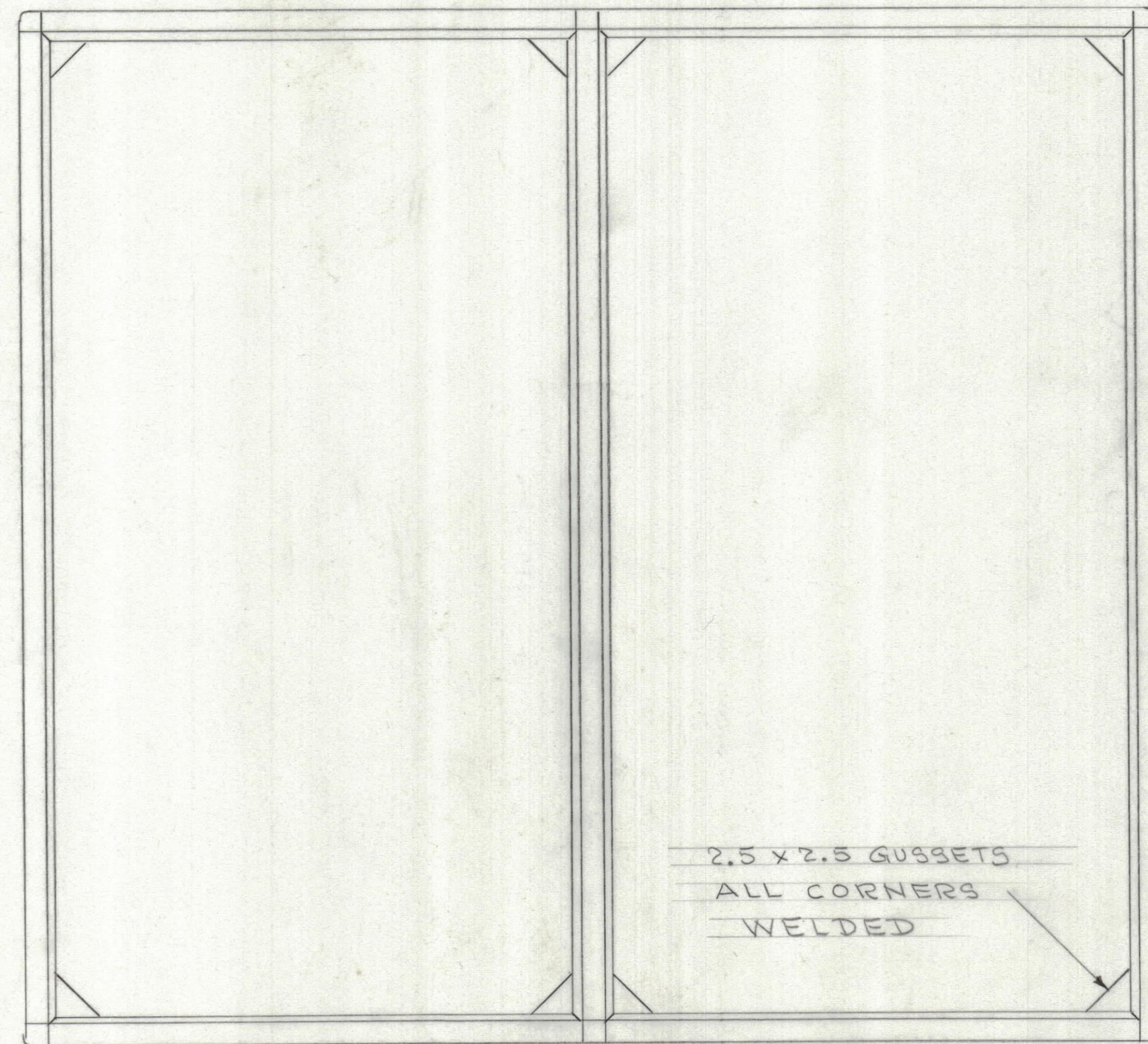
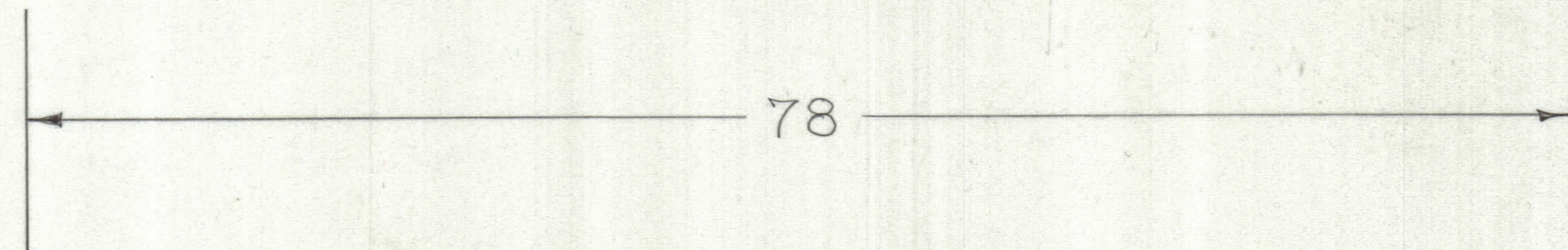
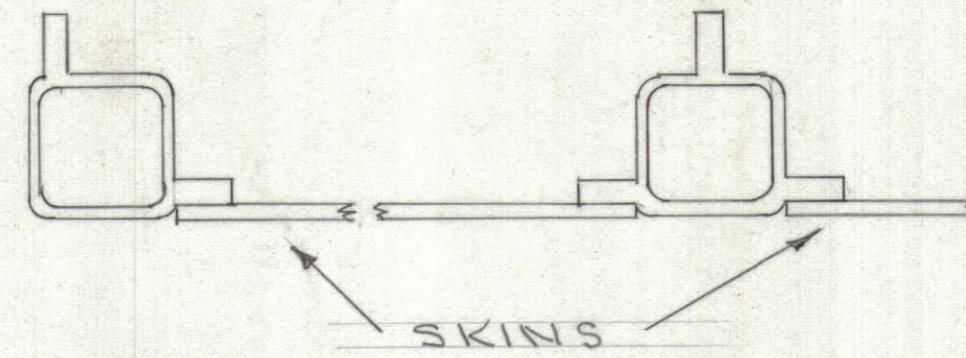
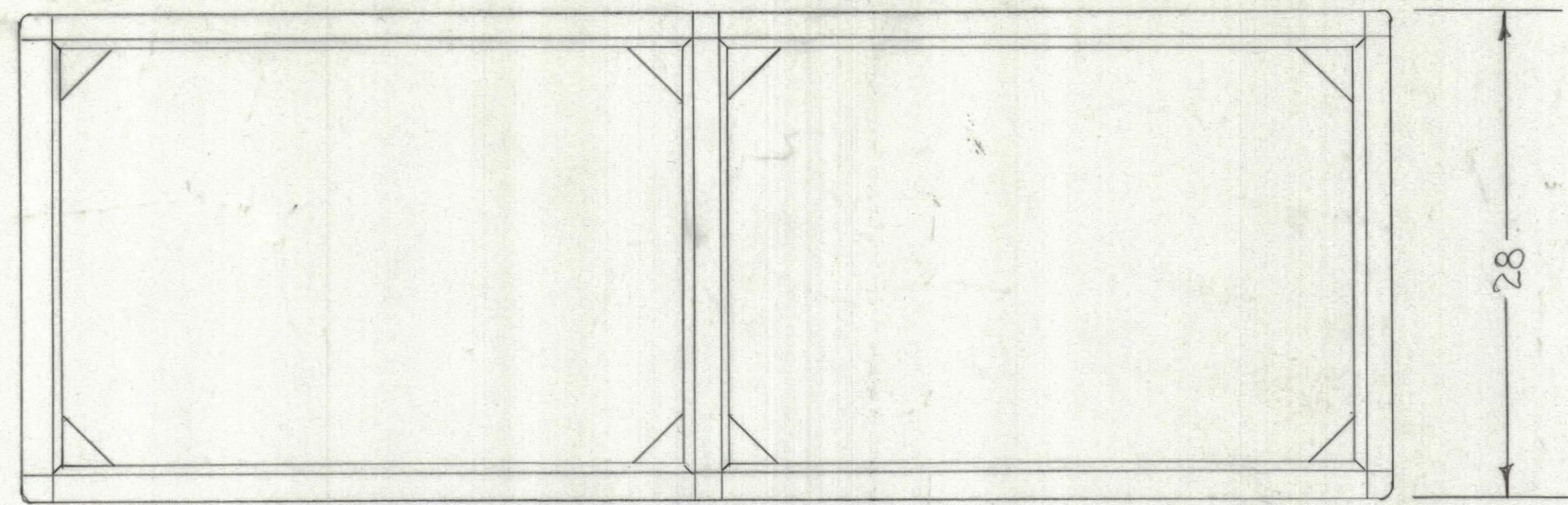


REVISIONS					
ZONE	LTR	DESCRIPTION	DATE	E.M.N.NO	APPD



**NOTE:**  
 FRAME TO BE SECURED TO FLOOR AFTER LOCATIONS IN AIRCRAFT  
 AFTER LOCATION IN AIRCRAFT  
 ALL CORNERS WELDED

1	UNIT 3	
QTY / UNIT	MODEL USED ON	ASS'Y NO.
APPLICATION		
CODE		
<small>NOTICE TO PERSONS RECEIVING THIS DRAWING</small> <small>THE TECHNICAL MATERIEL CORPORATION claims proprietary right in the material disclosed hereon. This drawing is issued in confidence for engineering information only and may not be reproduced or used to manufacture anything shown hereon without permission from THE TECHNICAL MATERIEL CORPORATION to the user. This drawing is loaned for mutual assistance and is subject to recall at any time.</small>		

UNLESS OTHERWISE SPECIFIED DIMENSIONS ARE IN INCHES AND INCLUDE CHEMICALLY APPLIED OR PLATED FINISHES	
TOLERANCES ON	
DECIMALS	FRACTIONS
.X ± .05	± 1/64
.XX ± .01	ANGLES
.XXX ± .005	± 0° -30'
MATERIAL	EXTRUDED ALUMINUM
FINISH	

QTY. REQ.	ITEM	PART NO.	DESCRIPTION	SYMBOL
LIST OF MATERIAL				
			THE TECHNICAL MATERIEL CORP. MAMARONECK, NEW YORK	
			CABINET FRAME FOR ATMC-1 MULTICOUPLER	
			SIZE CODE IDENT.NO. DWG NO.	ISSUE
			D 82679 M98098	
			SCALE	SHEET OF

M98098