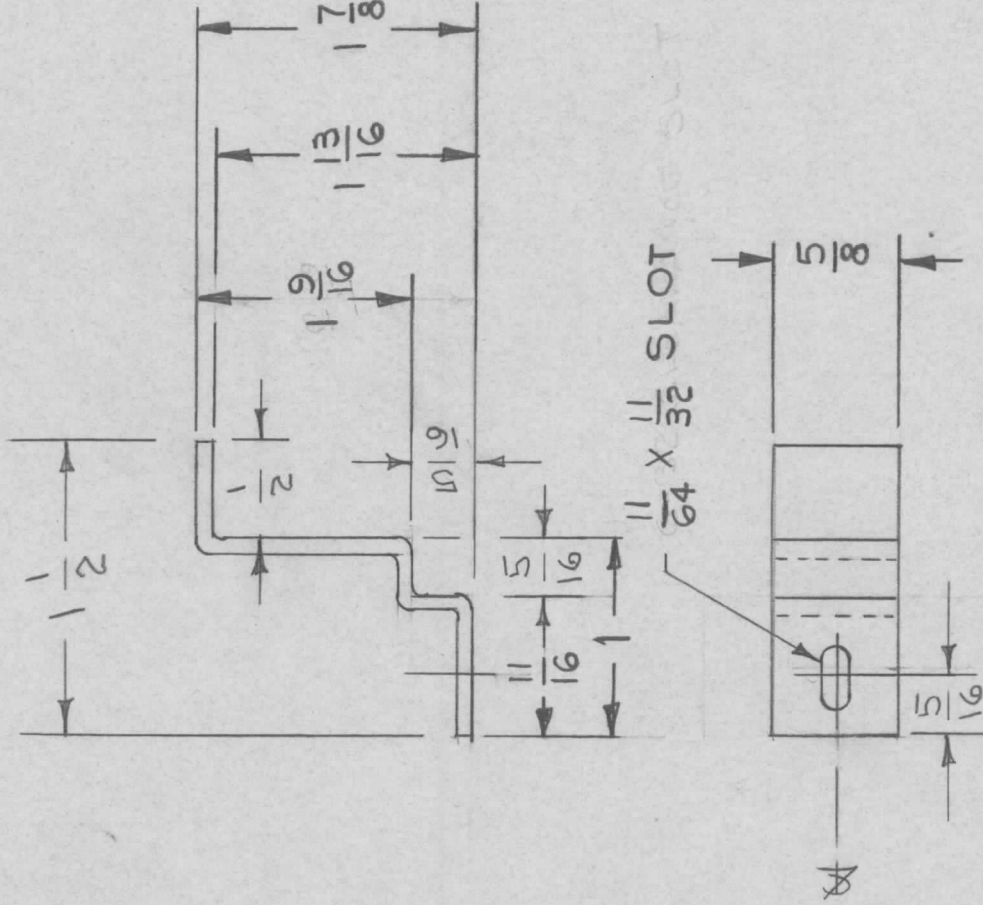


APPLICATION

QTY	MODEL USED ON	ASS'Y NO.	LTR
9	BA-71	13	

REVISIONS

DESCRIPTION	DATE	E.M.N.NO	DRAFT	CHKD	APPD
-------------	------	----------	-------	------	------



REQ'D ITEM	PART NUMBER	DESCRIPTION	SYM.
LIST OF MATERIAL			
THE TECHNICAL MATERIEL CORP. MAMARONECK, NEW YORK			
FINAL APPROVAL <i>S.M.</i>	DATE 12/13/67		
MECH. DES. <i>S.M.</i>	DATE 11/20/67		
ELECT. DES.	DATE		
CHECKED <i>G. ORLANDI</i>	DATE 12-12-67		
DRAWN <i>C.D. DEAN</i>	DATE 11-20-67		
MATERIAL 0.064 THK. 5052 H32 ALUM			
FINISH SA04 IRIDITE			
BATT TIE DOWNS			

NOTICE TO PERSONS RECEIVING THIS DRAWING
 THE TECHNICAL MATERIEL CORPORATION claims proprietary right in the material disclosed hereon. This drawing is issued in confidence for engineering information only and may not be reproduced or used to manufacture anything shown hereon without permission from THE TECHNICAL MATERIEL CORPORATION to the user. This drawing is loaned for mutual assistance and is subject to recall at any time.

SIZE A	CODE IDENT. NO. 82679	DWG NO. MS 8074	ISSUE φ
SCALE		SHEET	OF