

5

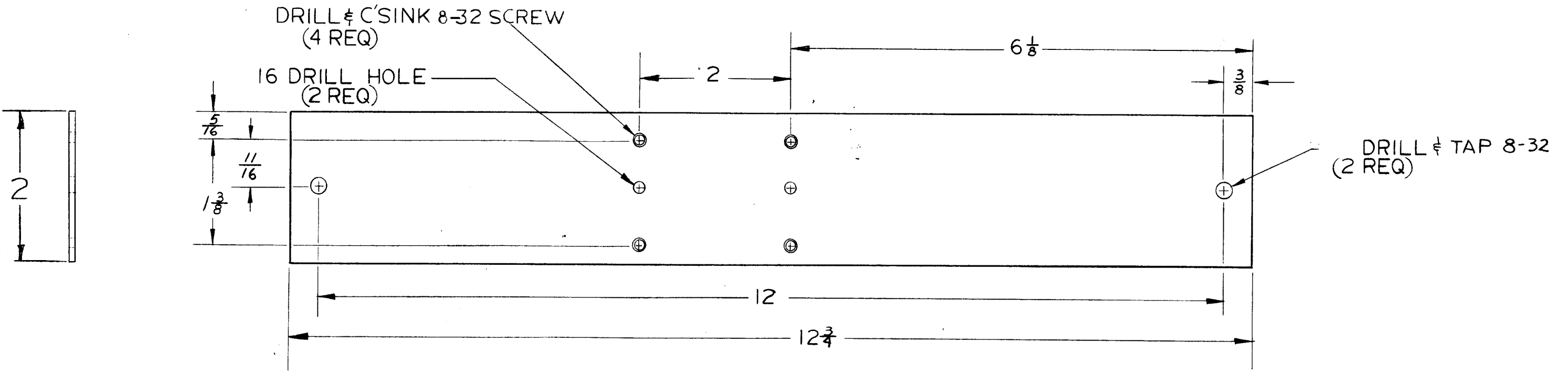
4

3

2

1

REVISIONS						
ZONE	LTR	DESCRIPTION	DATE	E.M.N.NO	DRAFT	CHKD APPD



HEWLET PACKARD
ADAPTER KIT 1490-0721

REQ'D	ITEM	PART NUMBER	DESCRIPTION	SYM.
-------	------	-------------	-------------	------

LIST OF MATERIAL

THE TECHNICAL MATERIEL CORP.
MAMARONECK, NEW YORK

BRACKET ADAPTER, RIGHT

1	UNIT II	
QTY / UNIT	MODEL USED ON	ASS'Y NO.
APPLICATION		
	CODE	

UNLESS OTHERWISE SPECIFIED
DIMENSIONS ARE IN INCHES
AND INCLUDE CHEMICALLY APPLIED
OR PLATED FINISHES

DECIMALS FRACTIONS
.X ± .05 TOLS. 1/64
.XX ± .01 ANGLES 0° .30'
.XXX ± .005

MATERIAL 2024 T3
1/8 ALUM (HARD)

FINISH
IRIDITE

FINAL APPROVAL
SJM DATE 11/29/67

MECH. DES.
E. NOTAPANGELO DATE 11/13/67

ELECT. DES.

CHECKED
G. ORLANDI DATE 11-21-67

DRAWN
C. Grob DATE 11/19/67

SIZE	CODE IDENT. NO.	DWG NO.	ISSUE
B	82679	MS 8056	Ø

NOTICE TO PERSONS RECEIVING THIS DRAWING
THE TECHNICAL MATERIEL CORPORATION claims proprietary right in the material disclosed hereon. This drawing is issued in confidence for engineering information only and may not be reproduced or used to manufacture anything shown hereon without permission from THE TECHNICAL MATERIEL CORPORATION to the user. This drawing is loaned for mutual assistance and is subject to recall at any time.