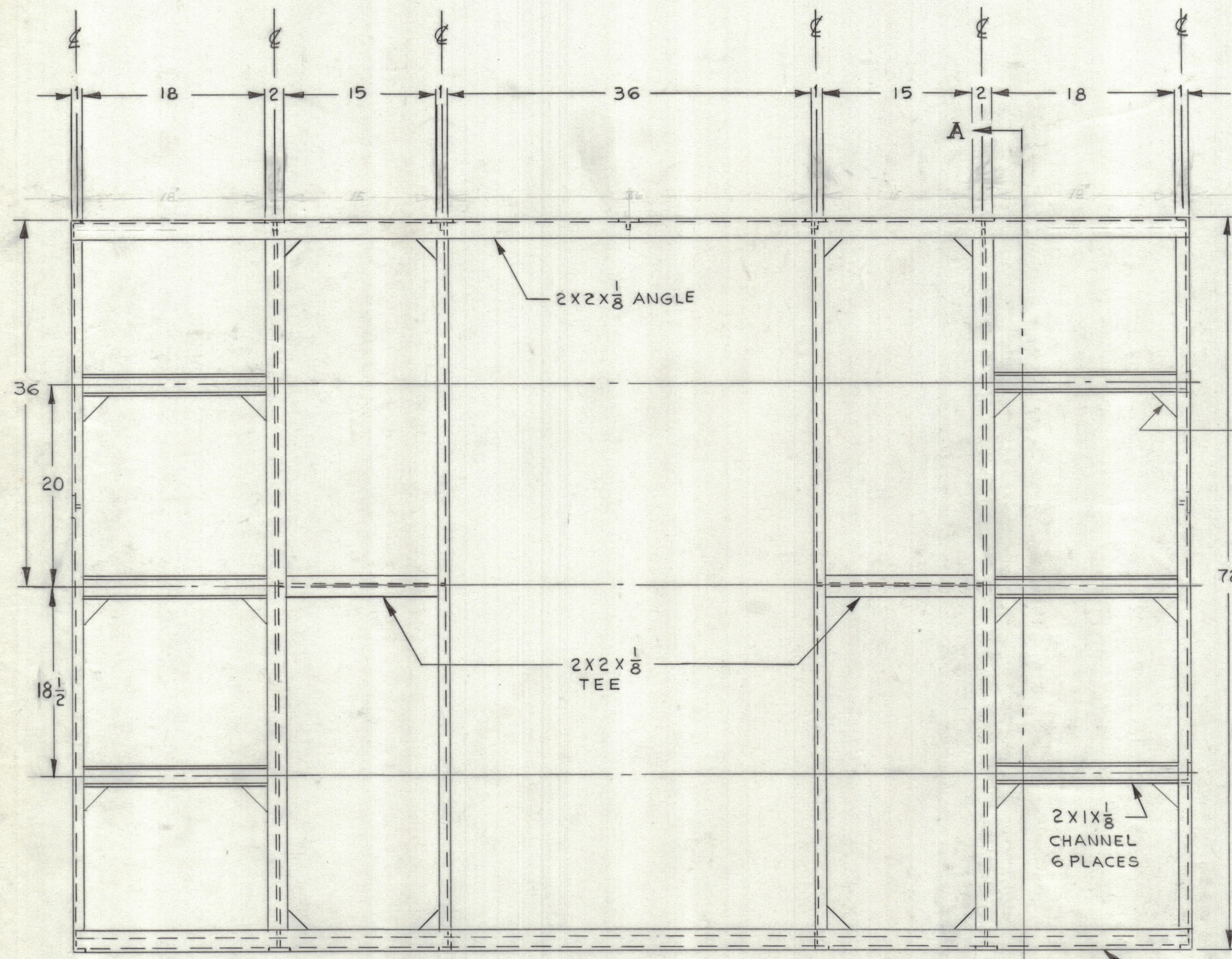
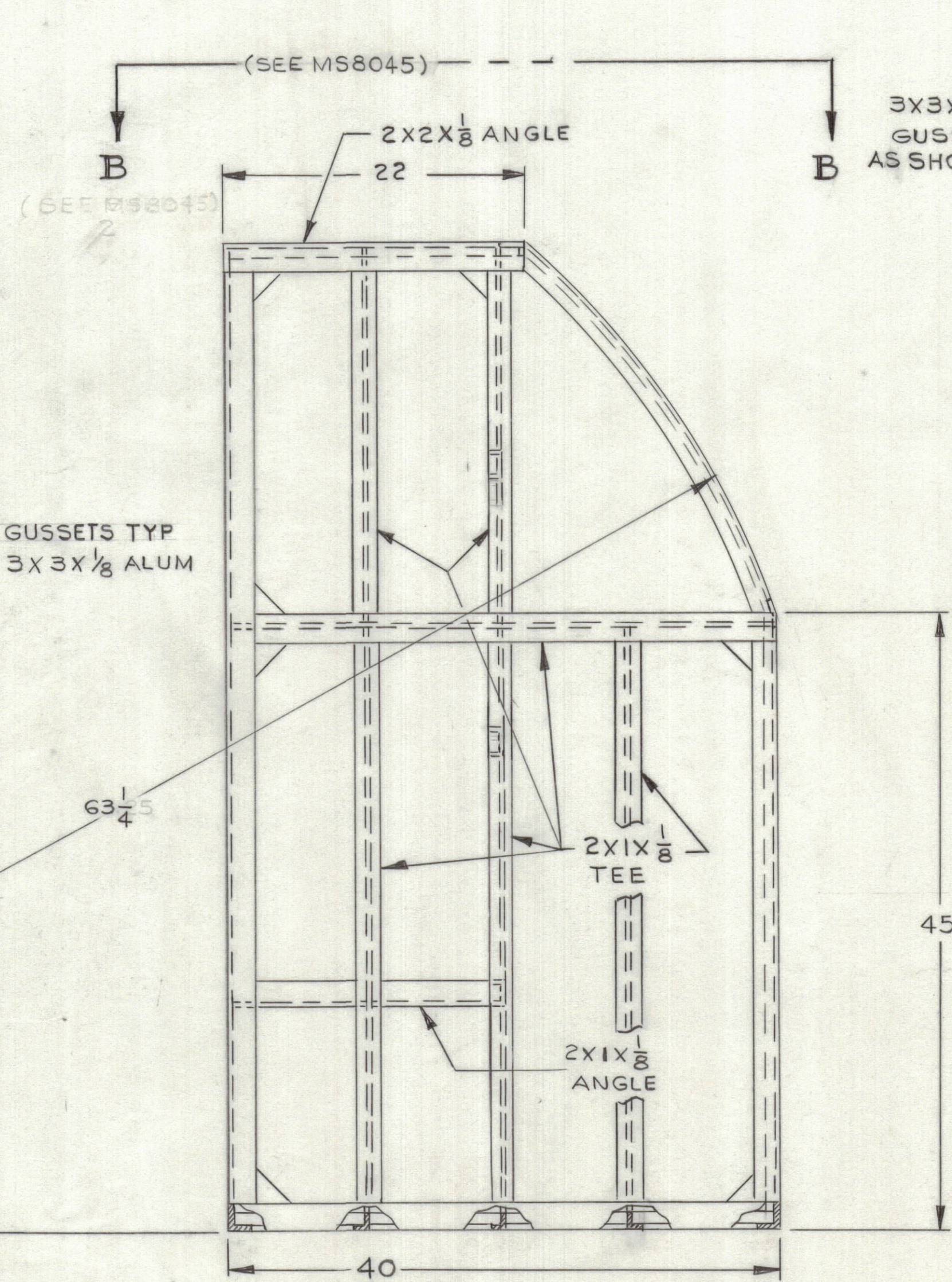


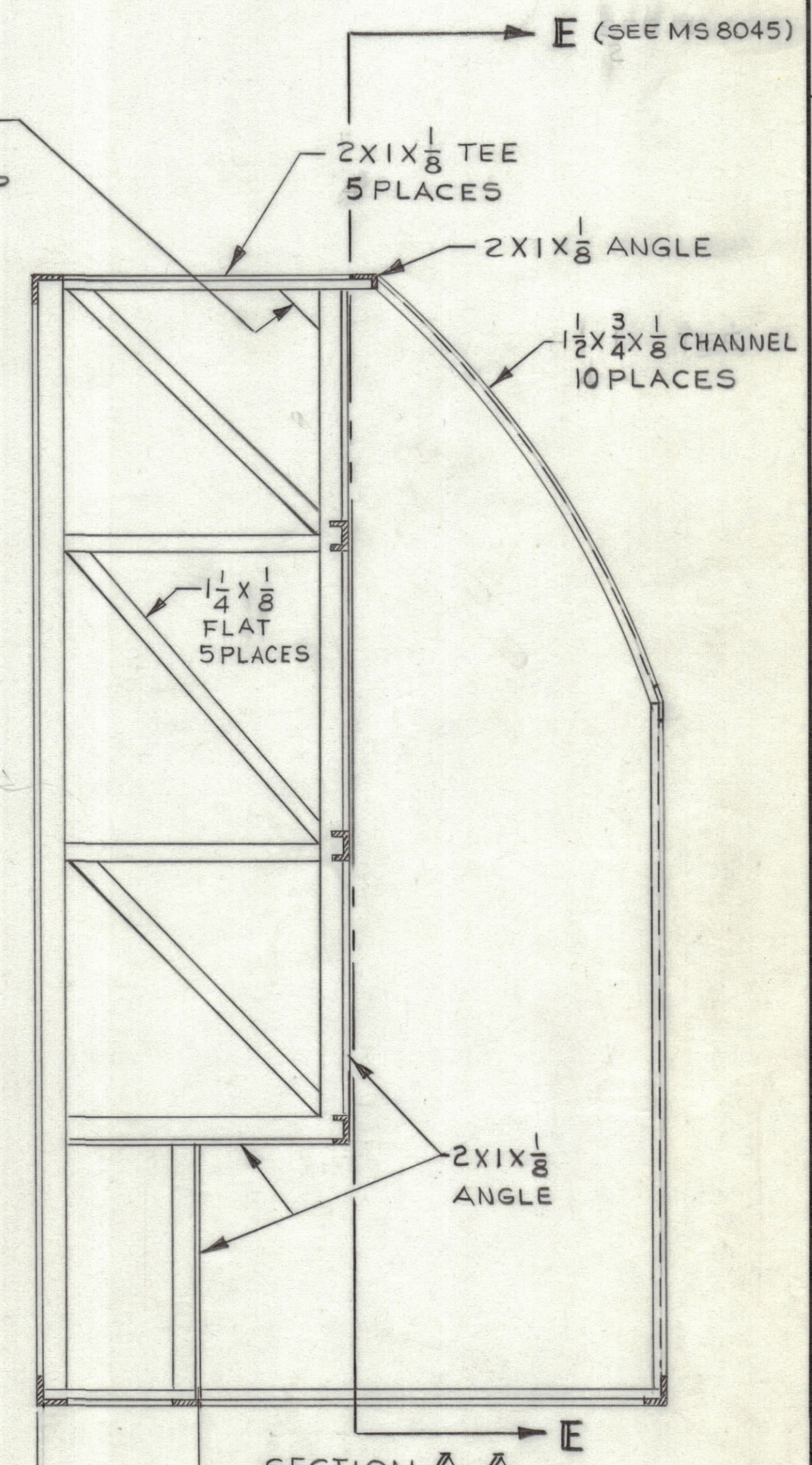
ZONE		LTR		DESCRIPTION		REVISIONS		DATE	E.M.N.NO	DRAFT	CHKD	APPD



FRONT



R. SIDE VIEW
L. SIDE IDENTICAL



SECTION A-A

- NOTES:
- 1.) TOLERANCE $\pm \frac{1}{32}$
 - 2.) HELIARC ALL JOINTS, BOTH SIDES, FULL.
 - 3.) GRIND FLUSH OUTSIDE EDGES.
 - 4.) ZINC CHROMATE CONVERSION COATING PER MIL-C-5541.
 - 5.) ZINC CHROMATE PER MIL-R-8585A.
 - 6.) 2X2X.125 - ANGLE
 - 7.) 2X1X.125 ANGLE
 - 8.) 1 X $\frac{3}{4}$ X.125 ANGLE
 - 9.) 2X1X.125 TEE
 - 10.) 2X2X.125 TEE
 - 11.) $\frac{1}{4}$ X.125 FLAT
 - 12.) 2 X .125 FLAT
 - 13.) $1\frac{1}{2}$ X $\frac{3}{4}$ X.125 CHANNEL
 - 14.) 2X1X.125 CHANNEL

SEE DWG NO. MS 8036 FOR BASE CONSTRUCTION AND UPRIGHT FRAME MATERIAL

REF: MS 8045, CABINET-TOP & REAR
MS 8043, BASE

QTY / UNIT	MODEL USED ON	ASS'Y NO.
APPLICATION		
CODE		
MATERIAL 6061-T6 ALUM		
FINISH SEE NOTES 4 & 5		

UNLESS OTHERWISE SPECIFIED DIMENSIONS ARE IN INCHES AND INCLUDE CHEMICALLY APPLIED OR PLATED FINISHES

TOLERANCES ON

DECIMALS	FRACTIONS
.X \pm .05	$\pm \frac{1}{64}$
.XX \pm .01	ANGLES
.XXX \pm .005	$\pm 0' .30'$

QTY. REQ.	ITEM	PART NO.	DESCRIPTION	SYMBOL
LIST OF MATERIAL				
FINAL APPROVAL		DATE	THE TECHNICAL MATERIEL CORP.	
MECH. DES. <i>G. ORLANDI</i>		11-2-67	MAMARONECK, NEW YORK	
ELECT. DES.		DATE	CABINET	
CHECKED		DATE	SPT-3KVHF	
DRAWN <i>Amiska</i>		DATE	SIZE CODE IDENT. NO. DWG NO.	
		11-6-67	D 82679 MS 8044	
			SCALE 1/8 SHEET 1 OF 3	

NOTICE TO PERSONS RECEIVING THIS DRAWING

THE TECHNICAL MATERIEL CORPORATION claims proprietary right in the material disclosed hereon. This drawing is issued in confidence for engineering information only and may not be reproduced or used to manufacture anything shown hereon without permission from THE TECHNICAL MATERIEL CORPORATION to the user. This drawing is loaned for mutual assistance and is subject to recall at any time.

MS8044

A