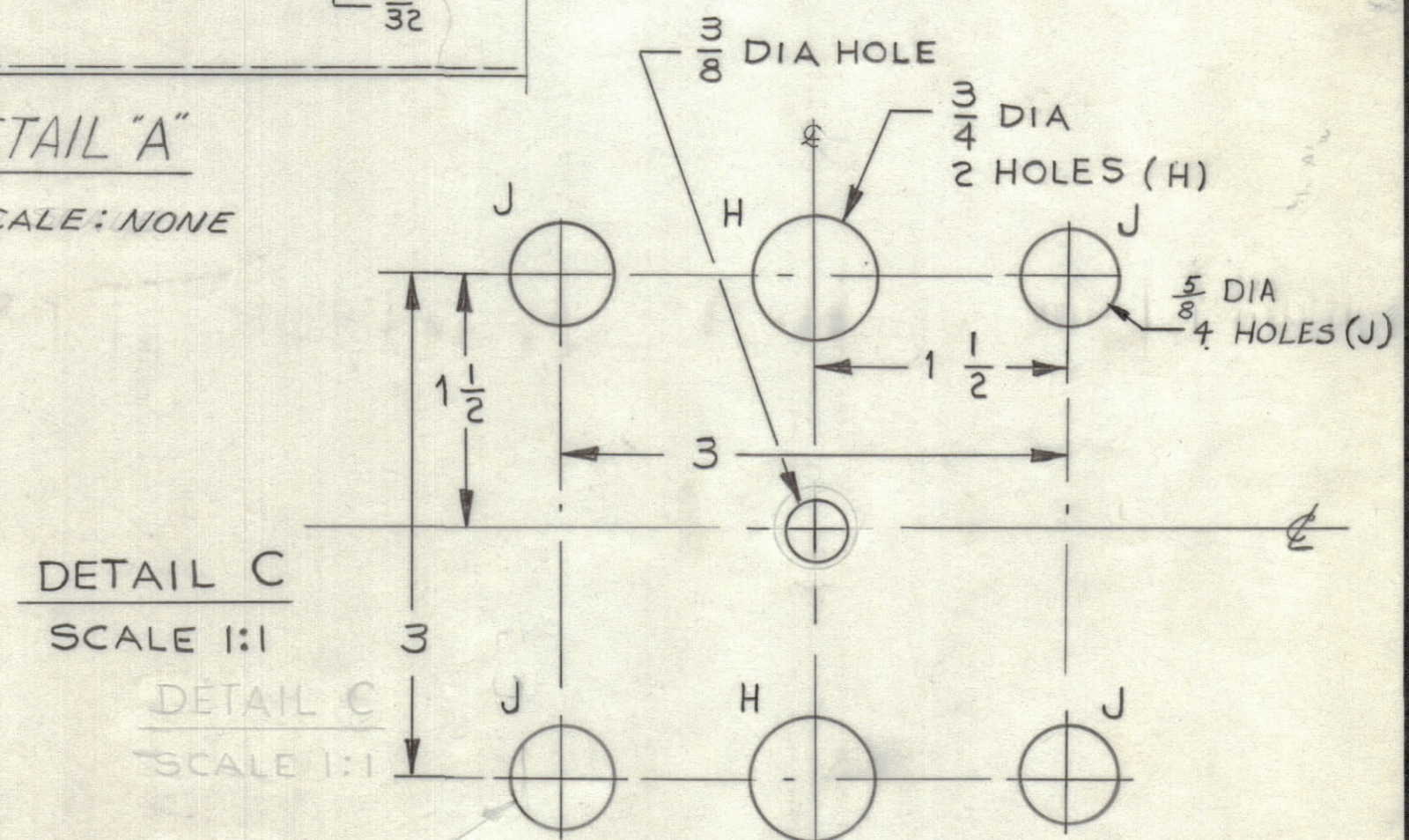
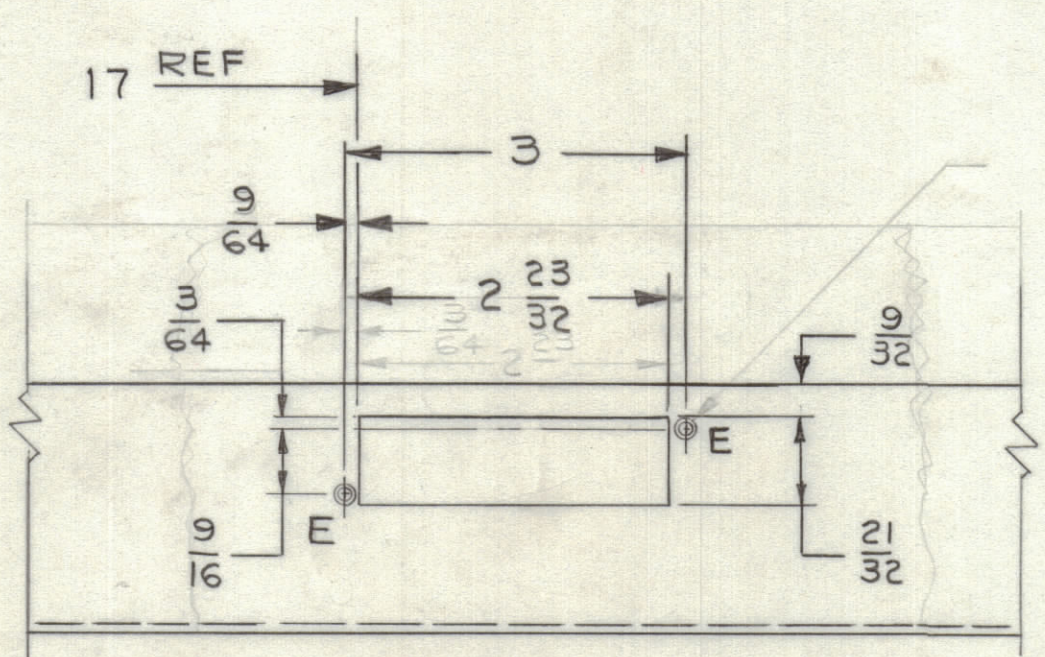
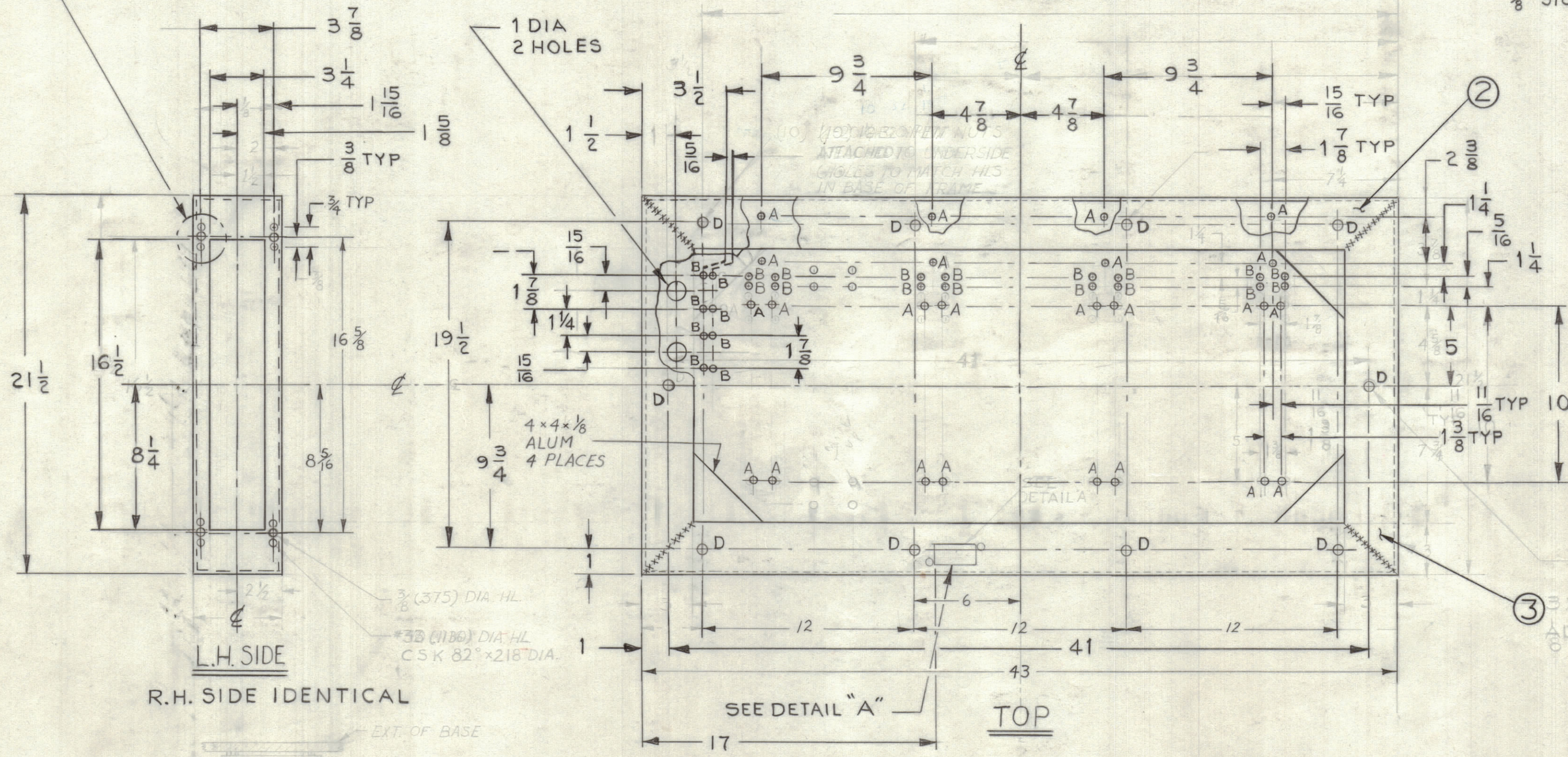
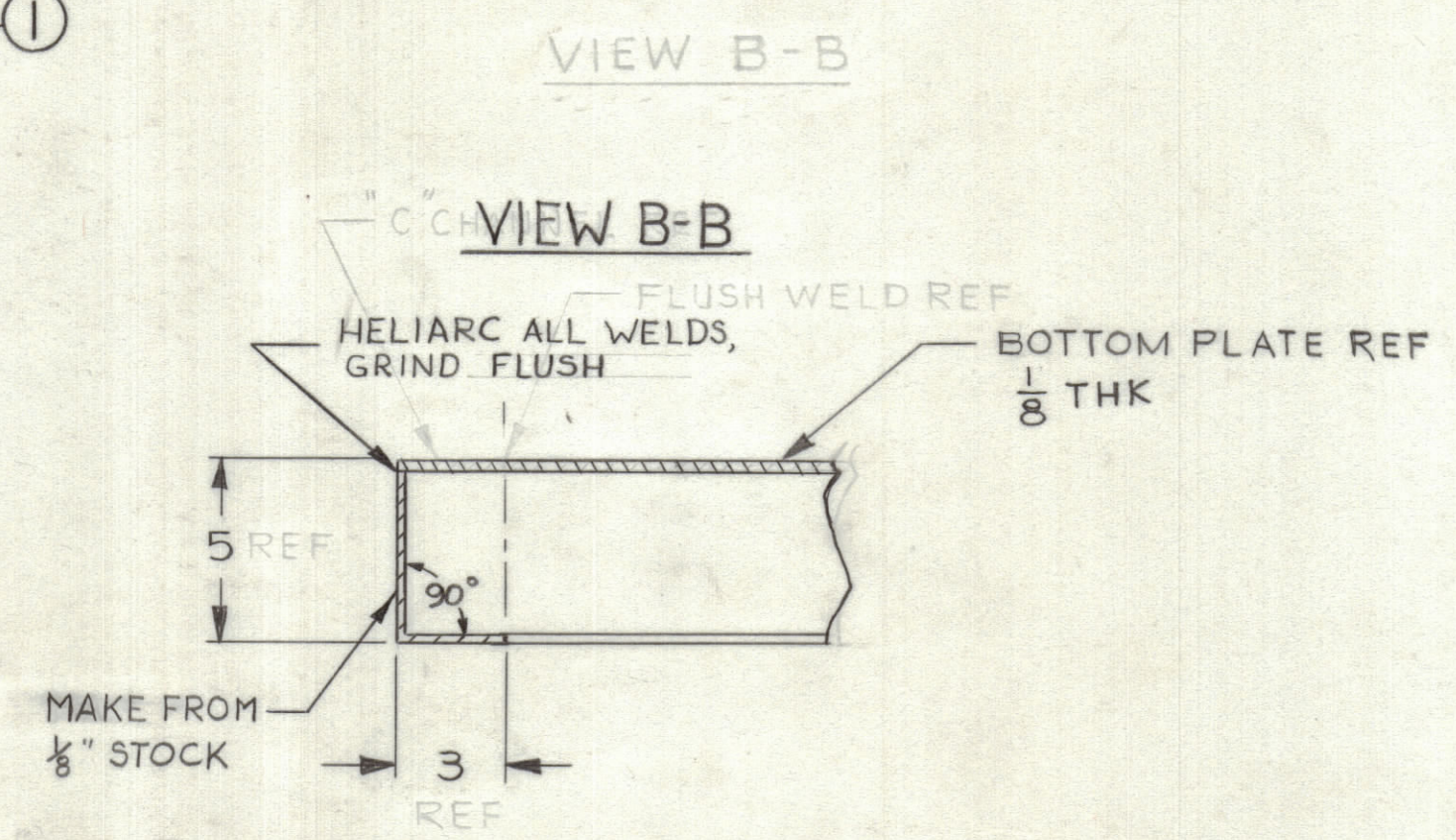
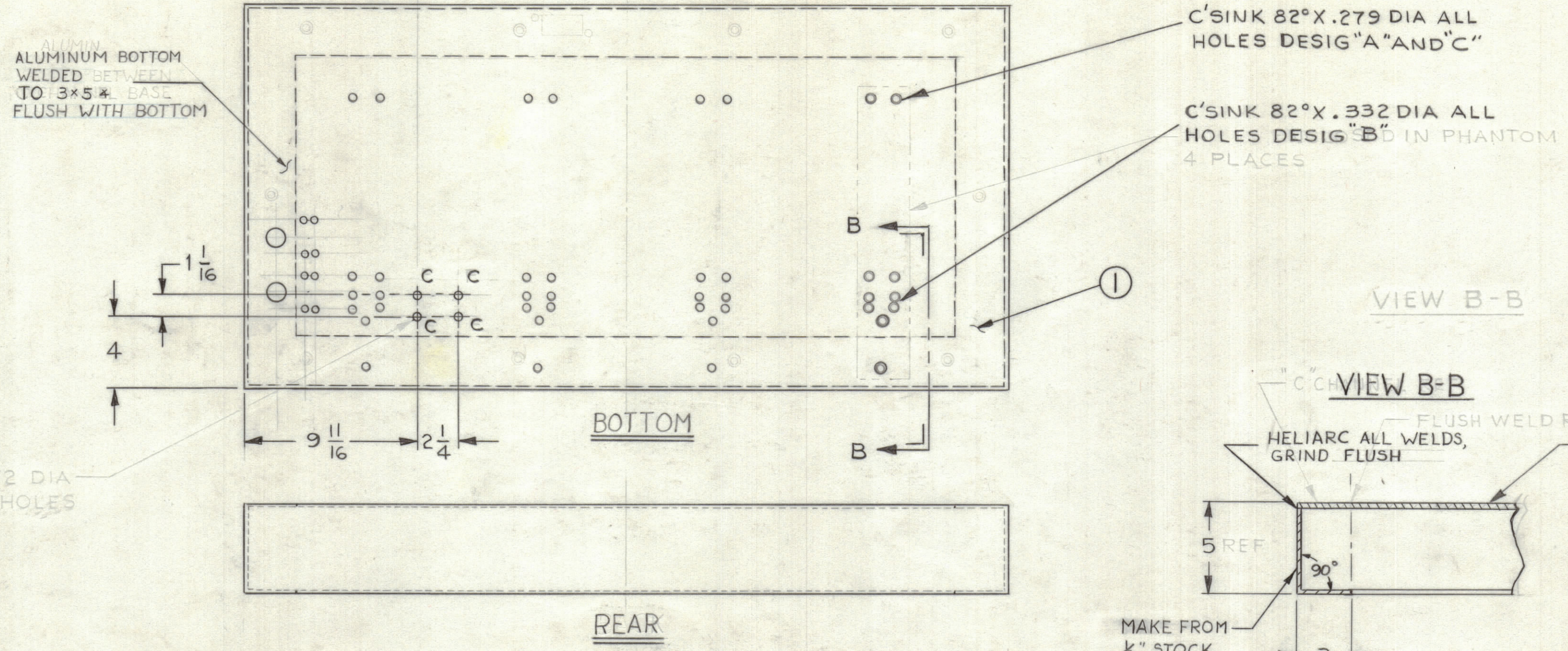
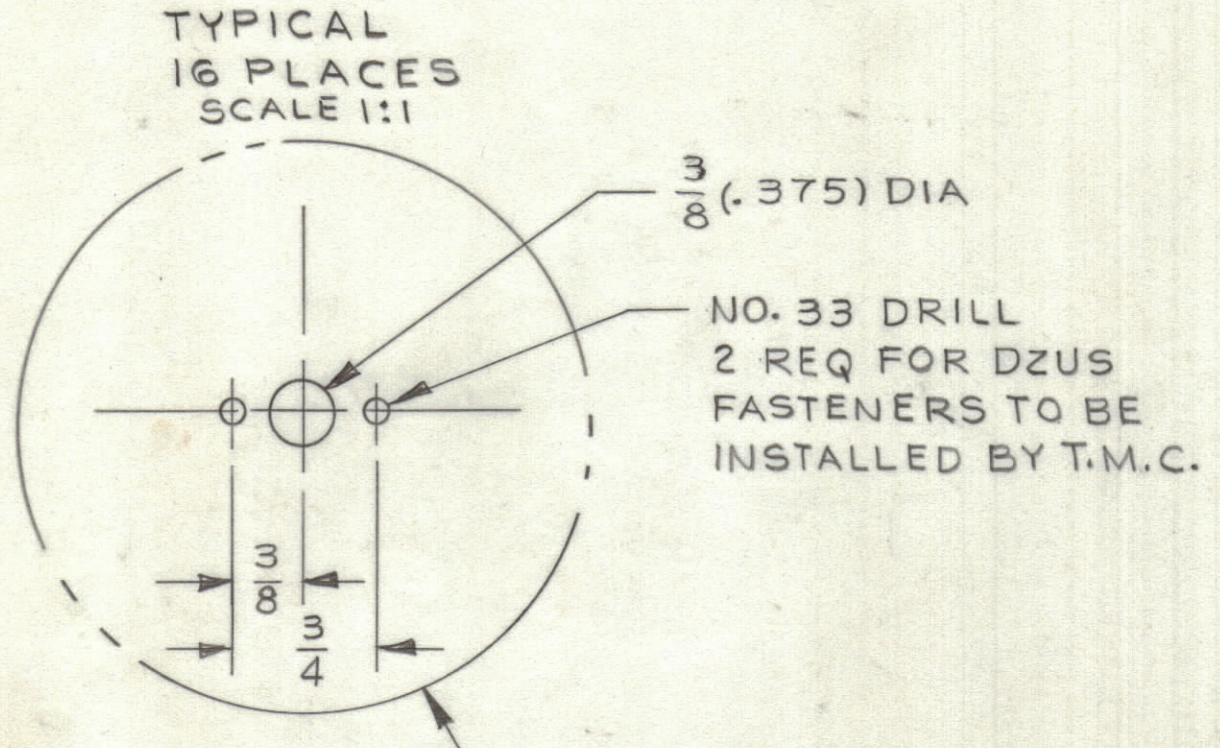


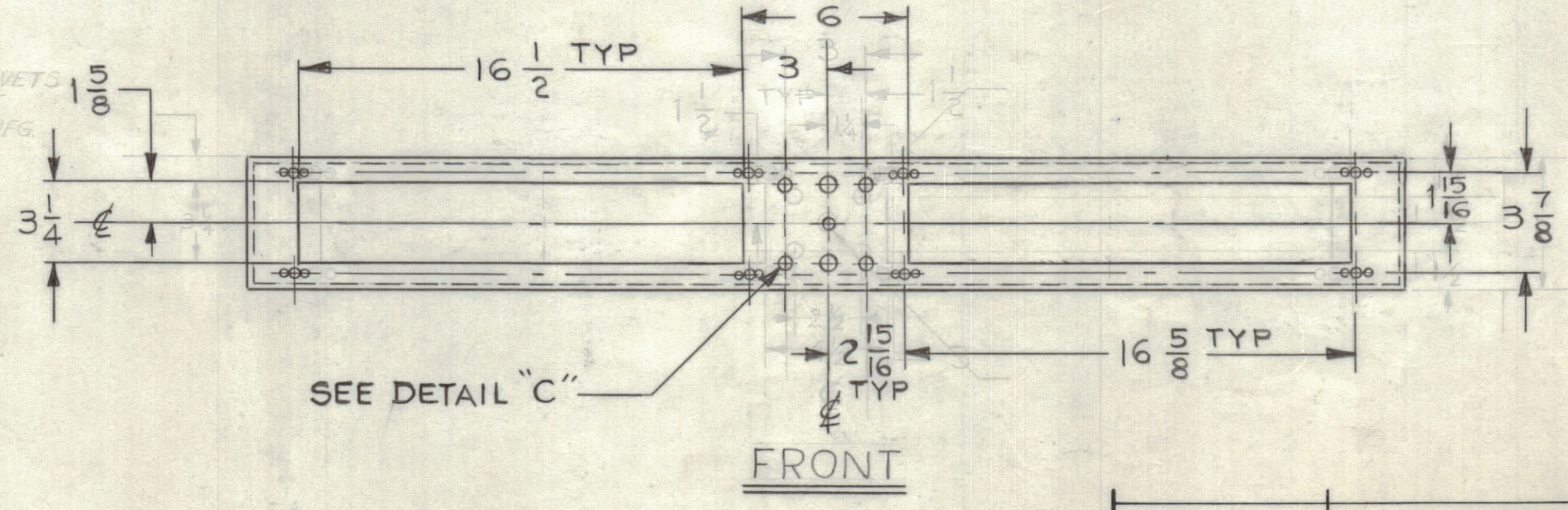
ZONE		LTR		DESCRIPTION		DATE		E.M.N.NO		DRAFT		CHKD		APPD	
3		X1		FRAME WAS 3x5" C CHANNEL		2/12/67				C. GROB					



**HOLE LEGEND**

A	NO. 10 DR (.193) DIA HOLES	24 REQ
B	NO. 19 DR (.166) DIA HOLES	24 REQ
C	.172 DIA HOLES	4 REQ
D	9/32 (.281) DIA HOLES	10 REQ
E	5/32 (.156) DIA HOLES	2 REQ
R	.172 DIA HOLES	4 REQ

DZUS FASTENERS 16 REQ. W/DRIVEWETS HARDWARE TO BE ASSEMBLED BY MFG.



REF: MS8197

QTY. REQ.	ITEM	PART NO.	DESCRIPTION	SYMBOL
1	1	MS8197-3	BASE FRAME, STRUCTURAL MEMBERS	
2	2	MS8197-1	" " " " " "	
2	3	MS8197-2	" " " " " "	

LIST OF MATERIAL

FINAL APPROVAL: *JM* DATE: 4-20-68  
 MECH. DES. DATE: 10/16/67  
 ELECT. DES. DATE: 11-2-67  
 CHECKED: *CMG* DATE: 10/16/67  
 DRAWN: C. GROB DATE: 10/16/67

THE TECHNICAL MATERIEL CORP.  
 MAMARONECK, NEW YORK  
 BASE UNIT 10  
 BASE-UNIT 10

QTY / UNIT	MODEL USED ON	ASS'Y NO.
APPLICATION		
CODE		
MATERIAL		
ALUMINUM 5052 T5		
FINISH		
S404 IRIDITE		

UNLESS OTHERWISE SPECIFIED DIMENSIONS ARE IN INCHES AND INCLUDE CHEMICALLY APPLIED OR PLATED FINISHES

**TOLERANCES ON**

DECIMALS	FRACTIONS
.X ± .05	± 1/64
.XX ± .01	ANGLES ± 0' 30"
.XXX ± .005	

SIZE	CODE	IDENT. NO.	DWG NO.	ISSUE
D	82679		MS8007	1