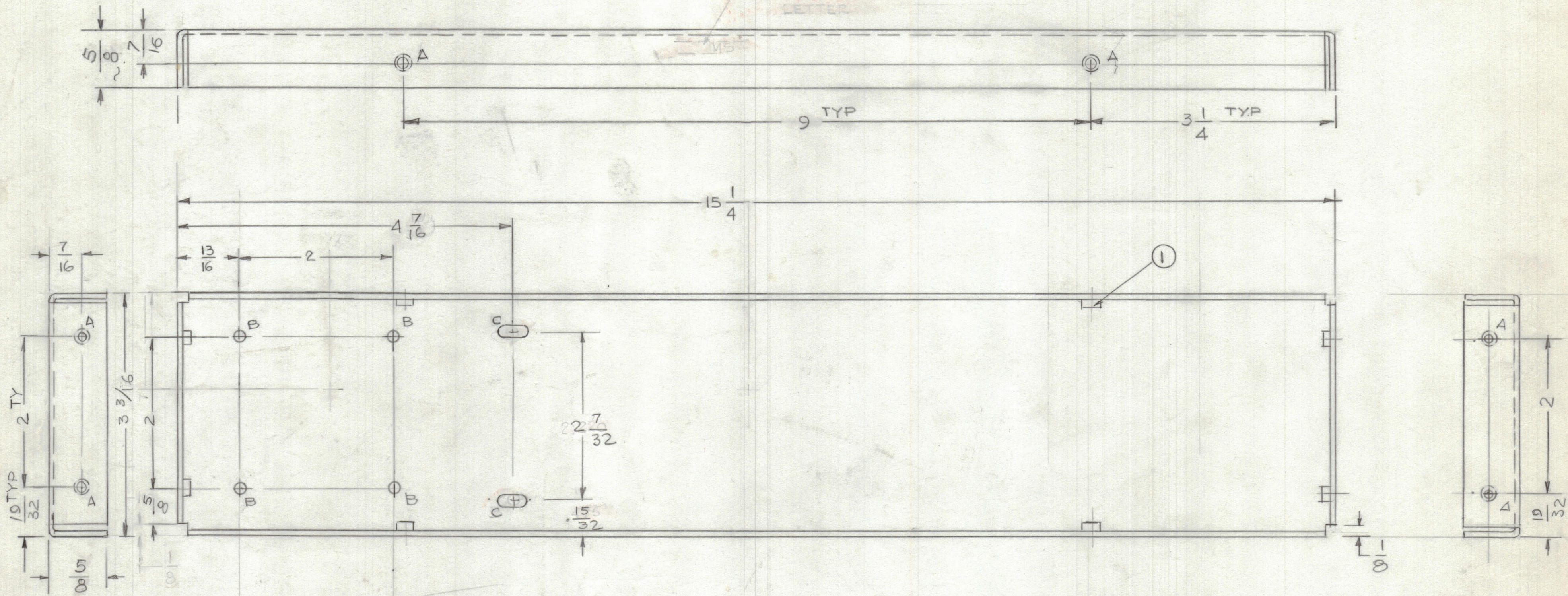


REVISIONS						
ZONE	LTR	DESCRIPTION	DATE	E.M.N.NO	DRAFT	CHKD APPD
	Ø	ORIG. RELEASE FOR PRODU	2-4-93		G.D.L.	
	A	TWO 1/2" HOLES WAS "B" HOLES	3-18-93		G.D.L.	

MAKE TMC P/NO. 1/8 HIGH
GOTHIC WITH LATEST REV.
LETTER



HOLES:
 A - .191-.194 DIA 8 REQ'D
 B - 9/64 DIA 4 REQ'D
 C - 13/64 x 13/32 2 REQ'D

2	AMC 32 S...	
QTY / UNIT	MODEL USED ON	ASS'Y NO.
APPLICATION		
CODE		

NOTICE TO PERSONS RECEIVING THIS DRAWING
 THE TECHNICAL MATERIEL CORPORATION claims proprietary right in the material disclosed hereon. This drawing is issued in confidence for engineering information only and may not be reproduced or used to manufacture anything shown hereon without permission from THE TECHNICAL MATERIEL CORPORATION to the user. This drawing is loaned for mutual assistance and is subject to recall at any time.

UNLESS OTHERWISE SPECIFIED
 DIMENSIONS ARE IN INCHES
 AND INCLUDE CHEMICALLY APPLIED
 OR PLATED FINISHES

TOLERANCES ON

DECIMALS	FRACTIONS
.X ± .05	± 1/64
.XX ± .01	ANGLES
.XXX ± .005	± 0°-30'

MATERIAL .063 THK
 ALUM 5052-H32

FINISH S404
 YEL IRIDITE

NT 129 -0632 -4		NUT, ROUND		
QTY. REQ.	ITEM	PART NO.	DESCRIPTION	SYMBOL
LIST OF MATERIAL				
THE TECHNICAL MATERIEL CORP. MAMARONECK, NEW YORK				
PLATE, RIGHT & LEFT SIDE				
MATERIAL .063 THK ALUM 5052-H32		FINISH S404 YEL IRIDITE		
SIZE	CODE IDENT.NO	DWG NO.	ISSUE	
C	82679	MS7263	A	
SCALE	1:1	SHEET	OF	

D
C
B
A

D
C
B
A

4
3
2
1

4
3
2
1

4
3
2
1

4
3
2
1