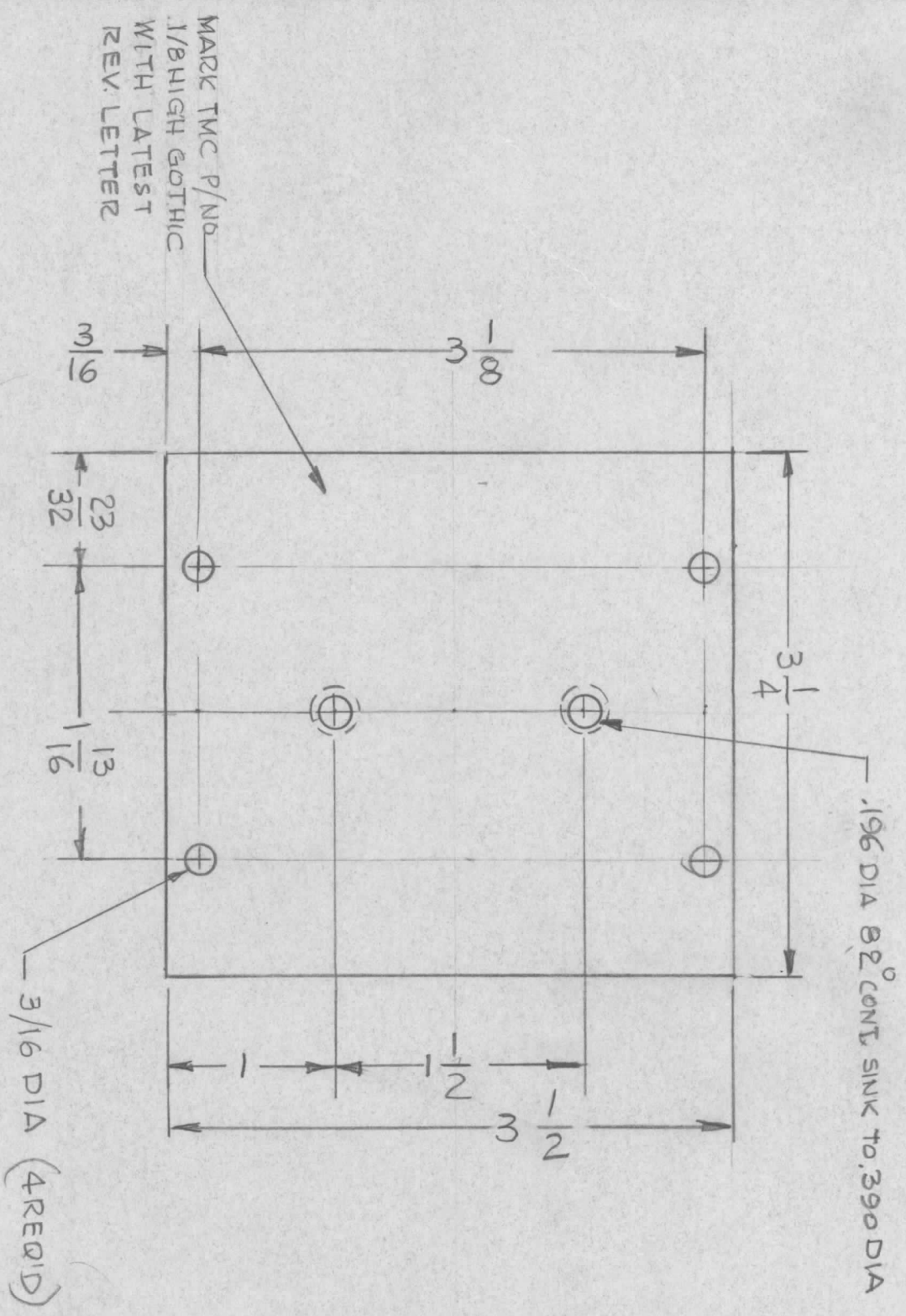


REVISIONS				DATE	APPROVED
EMN NO.	DRAFT	CHKD	ZONE	LTR	DESCRIPTION
	GDL			A	ORIGINAL RELEASE FOR PRODUCTION
					3-20-91



QTY / UNIT	1	MODEL USED ON	AP-128	ASS'Y NO.	DD-132-1
APPLICATION		CODE			

NOTICE TO PERSONS RECEIVING THIS DRAWING  
 THE TECHNICAL MATERIEL CORPORATION claims proprietary right in the material disclosed hereon. This drawing is issued in confidence for engineering information only and may not be reproduced or used to manufacture anything shown hereon without permission from THE TECHNICAL MATERIEL CORPORATION to the user. This drawing is loaned for mutual assistance and is subject to recall at any time.

UNLESS OTHERWISE SPECIFIED DIMENSIONS ARE IN INCHES AND INCLUDE CHEMICALLY APPLIED OR PLATED FINISHES	DECIMALS	FRACTIONS	ANGLES
.X ± .05	1/64	0° - 30'	
.XX ± .01			
.XXX ± .005			
MATERIAL	.081 THK. ALUM 5052-H32		
FINISH	S404 YEL. IRIDITE		

REQ'D ITEM	PART NUMBER	DESCRIPTION	SYM.
		LIST OF MATERIAL	
FINAL APPROVAL		DATE	
MECH. DES.		DATE	
ELECT. DES.		DATE	
CHECKED	DATE	DATE	
DRAWN	DATE	DATE	
GDL	1-31-91		
SIZE		CODE IDENT. NO.	DWG NO.
B		82679	MS 7254
SCALE		1:1	SHEET
			OF
			ISSUE
			A

THE TECHNICAL MATERIEL CORP.  
 MAMARONECK, NEW YORK  
 PLATE MTG. SEMICOND.