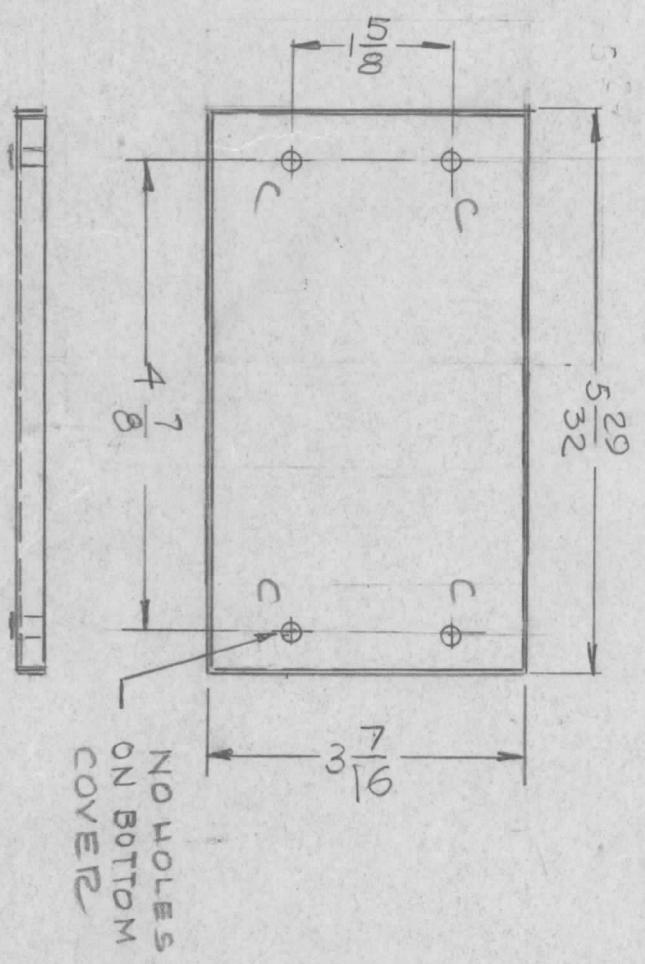
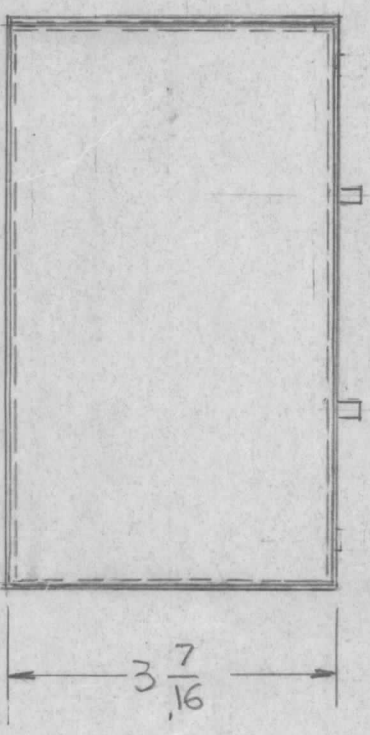
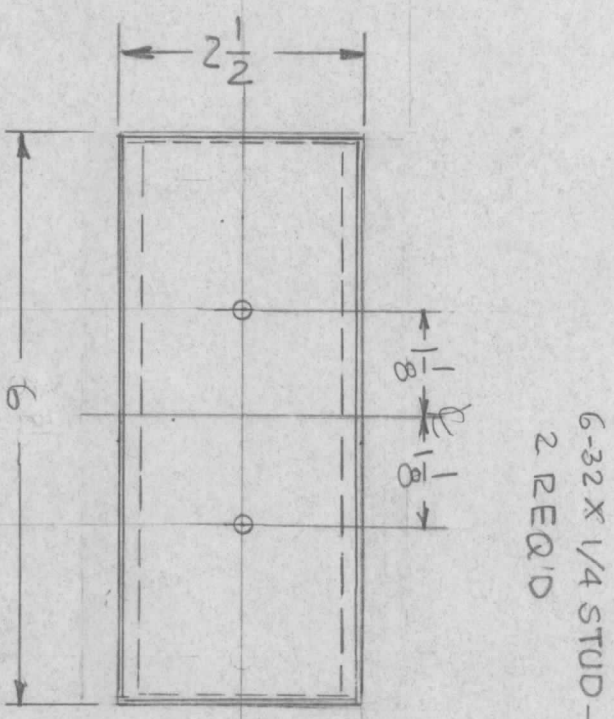
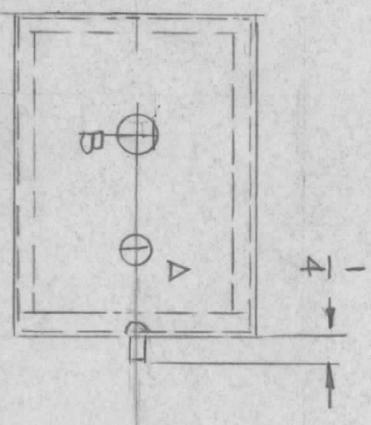
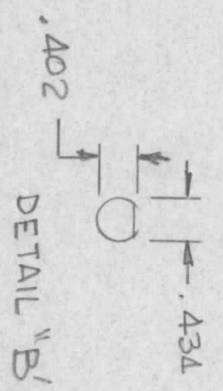


REVISIONS							
EMIN NO.	DRAFT	CHKD	ZONE	LTR	DESCRIPTION	DATE	APPROVED

USE FOR ONE UNIT



HOLES
A - 1/4 DIA
B - SEE DETAIL 2 REQ'D
C - .188 DIA 4 REQ'D

QTY / UNIT	1	MODEL USED ON	PAL-15 REC ONLY	ASSY NO.	
APPLICATION		CODE			

REF:

UNLESS OTHERWISE SPECIFIED DIMENSIONS ARE IN INCHES AND INCLUDE CHEMICALLY APPLIED OR PLATED FINISHES	
DECIMALS	FRACTIONS
.X ± .05	1/64
.XX ± .01	TOLS. ANGLES
.XXX ± .005	0° - 30°

FINAL APPROVAL	DATE
MECH. DES.	DATE
ELECT. DES.	DATE
CHECKED	DATE
DRAWN	DATE

REQ'D ITEM	A	1	TE164-1	PART NUMBER		DESCRIPTION		SYM.	C
LIST OF MATERIAL									
THE TECHNICAL MATERIEL CORP.									
MAMARONECK, NEW YORK									
BX 238 MODIFIED									
BOX RF AMPL.									
SIZE	B	CODE IDENT. NO.	82679	DWG NO.	MS 7251	ISSUE			
SCALE	1/2	SHEET		OF					

NOTICE TO PERSONS RECEIVING THIS DRAWING
THE TECHNICAL MATERIEL CORPORATION claims proprietary right in the material disclosed hereon. This drawing is issued in confidence for engineering information only and may not be reproduced or used to manufacture anything shown hereon without permission from THE TECHNICAL MATERIEL CORPORATION to the user. This drawing is loaned for mutual assistance and is subject to recall at any time.