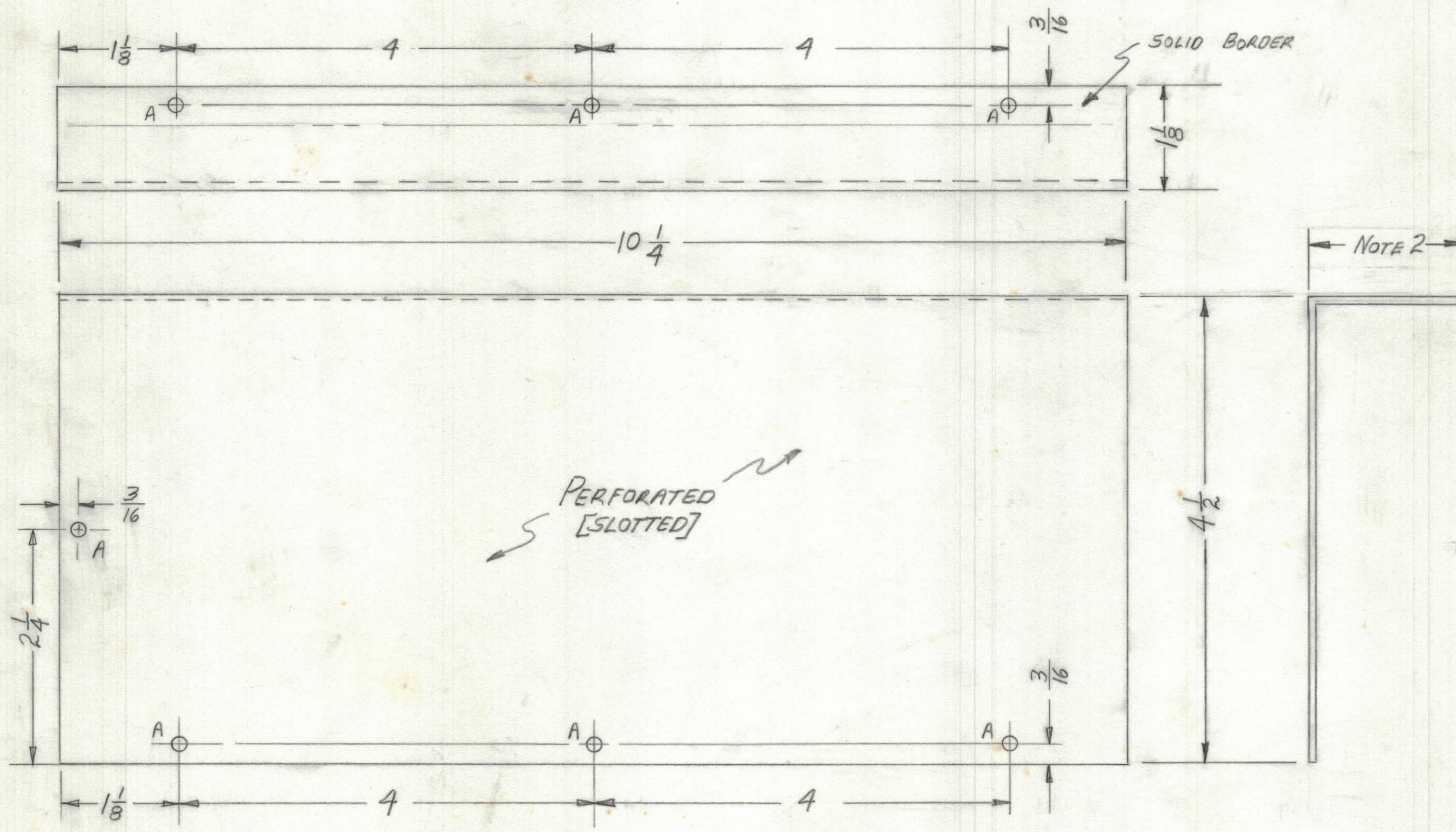


REVISIONS						
ZONE	LTR	DESCRIPTION	DATE	E.M.NNO	DRAFT	CHKD APPD



- NOTES:
- DRILL A  $\frac{1}{8}$  (.125) - 7 EACH
  - | ITEM     | DIMENSION              |
|----------|------------------------|
| M57246-1 | $\frac{1}{8}$ (.125)   |
| M57246-2 | $1\frac{3}{4}$ (1.750) |

75% APPROX  $\frac{1}{8}$  (.125)

QTY. REQ.	ITEM	PART NO.	DESCRIPTION	SYMBOL
LIST OF MATERIAL				
UNLESS OTHERWISE SPECIFIED DIMENSIONS ARE IN INCHES AND INCLUDE CHEMICALLY APPLIED OR PLATED FINISHES		FINAL APPROVAL	DATE	<b>THE TECHNICAL MATERIEL CORP.</b> MAMARONECK, NEW YORK  <i>MODULE, SCREEN COVER</i>
TOLERANCES ON		MECH. DES.	DATE	
DECIMALS		ELECT. DES.	DATE	
FRACTIONS		CHECKED	DATE	
ANGLES		DRAWN	DATE	
.X ± .05		MATERIAL		SIZE
.XX ± .01		.061 AL		CODE IDENT. NO.
.XXX ± .005		FINISH		DWG NO.
CODE		ISSUE		
APPLICATION		SCALE		
NOTICE TO PERSONS RECEIVING THIS DRAWING		SHEET		OF
THE TECHNICAL MATERIEL CORPORATION claims proprietary right in the material disclosed hereon. This drawing is issued in confidence for engineering information only and may not be reproduced or used to manufacture anything shown hereon without permission from THE TECHNICAL MATERIEL CORPORATION to the user. This drawing is loaned for mutual assistance and is subject to recall at any time.		82679		M57246

QTY / UNIT    MODEL USED ON    ASS'Y NO.

CODE

NOTICE TO PERSONS RECEIVING THIS DRAWING

THE TECHNICAL MATERIEL CORPORATION claims proprietary right in the material disclosed hereon. This drawing is issued in confidence for engineering information only and may not be reproduced or used to manufacture anything shown hereon without permission from THE TECHNICAL MATERIEL CORPORATION to the user. This drawing is loaned for mutual assistance and is subject to recall at any time.