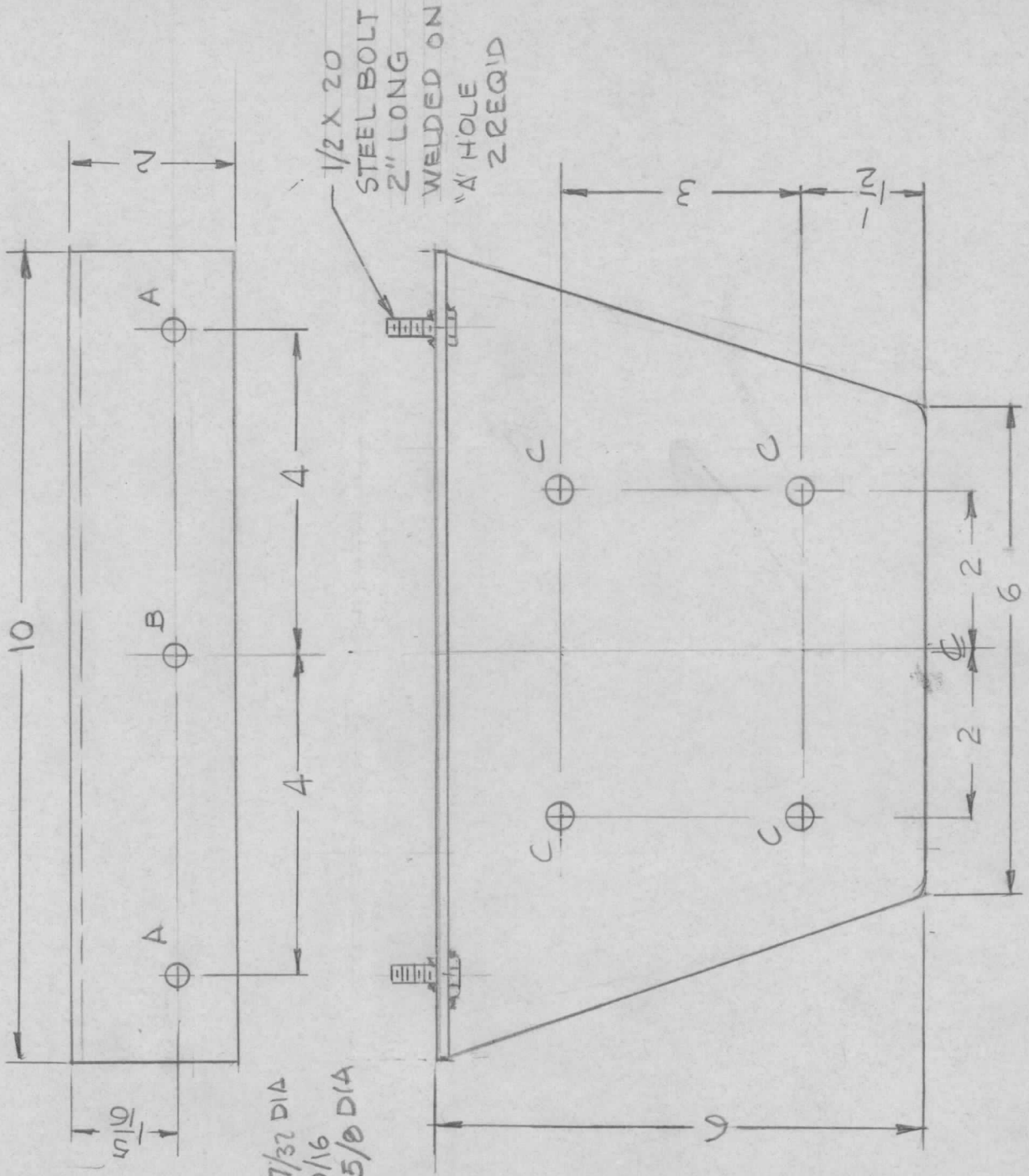


APPLICATION

REVISIONS

QTY	MODEL USED ON	ASSY NO.	LTR	DESCRIPTION	DATE	E.M.N.NO	DRAFT	CHKD	APPD
2	TER 500/1K	ID 478	Ø	ORIGINAL RELEASE FOR PROD.	5-31-94		G.D.L.		GR
2	TER -								



A- 17/32 DIA  
 B- 9/16  
 C- 5/8 DIA

UNLESS OTHERWISE SPECIFIED DIMENSIONS ARE IN INCHES AND INCLUDE CHEMICALLY APPLIED OR PLATED FINISHES	REQ'D ITEM	PART NUMBER	DESCRIPTION	SYM.
DECIMALS			LIST OF MATERIAL	
FRACTIONS				
.X ± .05 TOLS.	FINAL APPROVAL	DATE	THE TECHNICAL MATERIEL CORP.	
.XX ± .01 ANGLES	MECH. DES.	DATE	MAMARONECK, NEW YORK	
.XXX ± .005	ELECT. DES.	DATE	BRACKET, POLE MTG.	
MATERIAL 1/8THK STEEL COLD ROLLED	CHECKED	DATE		
FINISH PRIMER PAINT LIGHT GREY TEXTURED	DRAWN	DATE		

NOTICE TO PERSONS RECEIVING THIS DRAWING		SIZE	CODE IDENT. NO.	DWG NO.	ISSUE
THE TECHNICAL MATERIEL CORPORATION claims proprietary right in the material disclosed hereon. This drawing is issued in confidence for engineering information only and may not be reproduced or used to manufacture anything shown hereon without permission from THE TECHNICAL MATERIEL CORPORATION to the user. This drawing is loaned for mutual assistance and is subject to recall at any time.		A	82679	MS 7230	
		SCALE	1/2	SHEET	OF