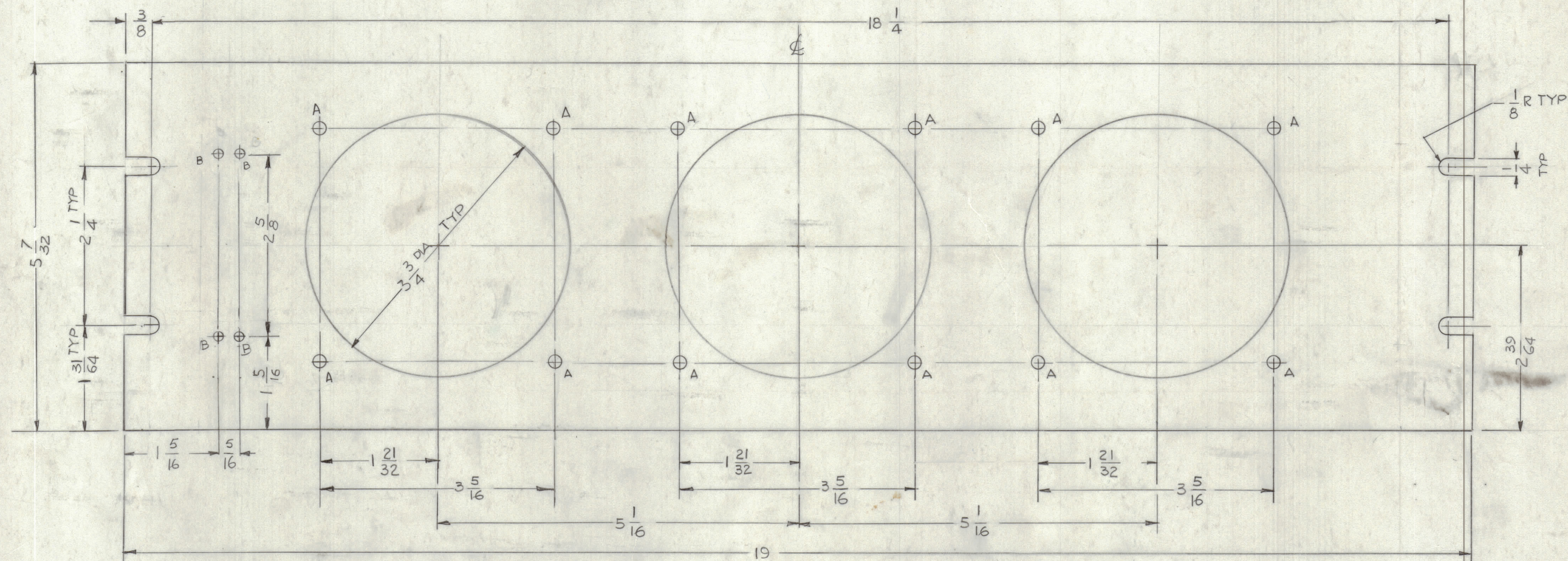


				REVISIONS			
E.M.N.O	DRAFT	CHKD	ZONE	LTR	DESCRIPTION	DATE	APPROVED



HOLES:
 A - 13/64 DIA 12 REQ'D
 B - 1/64 DIA 4 REQ'D

- MACHINING:
- 1- LATERAL BOW PANEL MUST BE KEEP WITHIN 1/32
 - 2- MILL EDGES.
 - 3- HOLES MUST BE DRILLED.
 - 4- PANEL MUST BE FREE OF ALL MACHINING MARKS
GUGES & SCRATCHES.

- FINISH NOTES:
- S404 - YELLOW IRIDITE
 - S114 - ZINCO CHROMATE PRIMER
 - S45 - SMOOTH GREY ENAMEL LIGHT
- } FINISH FRONT & EDGES ONLY

3 312.5.2
1656

QTY. REQ.	ITEM	PART NO.	DESCRIPTION	SYMBOL
LIST OF MATERIAL				
			THE TECHNICAL MATERIEL CORP. MAMARONECK, NEW YORK	
			FRONT PANEL	
			SIZE	CODE IDENT NO. DWG NO. ISSUE
			D 82679	MS 7220
			SCALE 1:1	SHEET OF

UNLESS OTHERWISE SPECIFIED DIMENSIONS ARE IN INCHES AND INCLUDE CHEMICALLY APPLIED OR PLATED FINISHES	FINAL APPROVAL <i>GDL</i>	DATE 3/1/91
TOLERANCES ON DECIMALS .X ± .05 .XX ± .01 .XXX ± .005	MECH. DES.	DATE
FRACTIONS ± 1/64 ANGLES ± 0° -30'	ELECT. DES.	DATE
	CHECKED	DATE
	DRAWN G.D.L.	DATE 1-10-90

1	BSP-3	
QTY / UNIT	MODEL USED ON	ASSY NO.
	APPLICATION	
	CODE	
NOTICE TO PERSONS RECEIVING THIS DRAWING		
THE TECHNICAL MATERIEL CORPORATION claims proprietary right in the material disclosed herein. This drawing is issued in confidence for engineering information only and may not be reproduced or used to manufacture anything shown hereon without permission from THE TECHNICAL MATERIEL CORPORATION to the user. This drawing is loaned for mutual assistance and is subject to recall at any time.		

MATERIAL 3/16 THK ALUM 2024-T3
 FINISH SEE FINISH NOTES