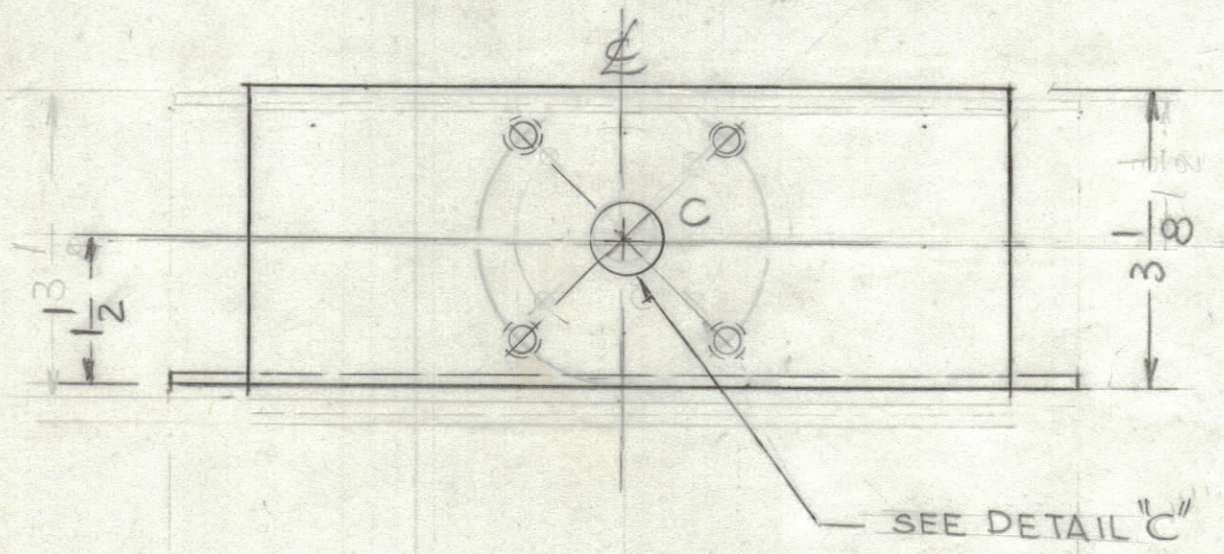
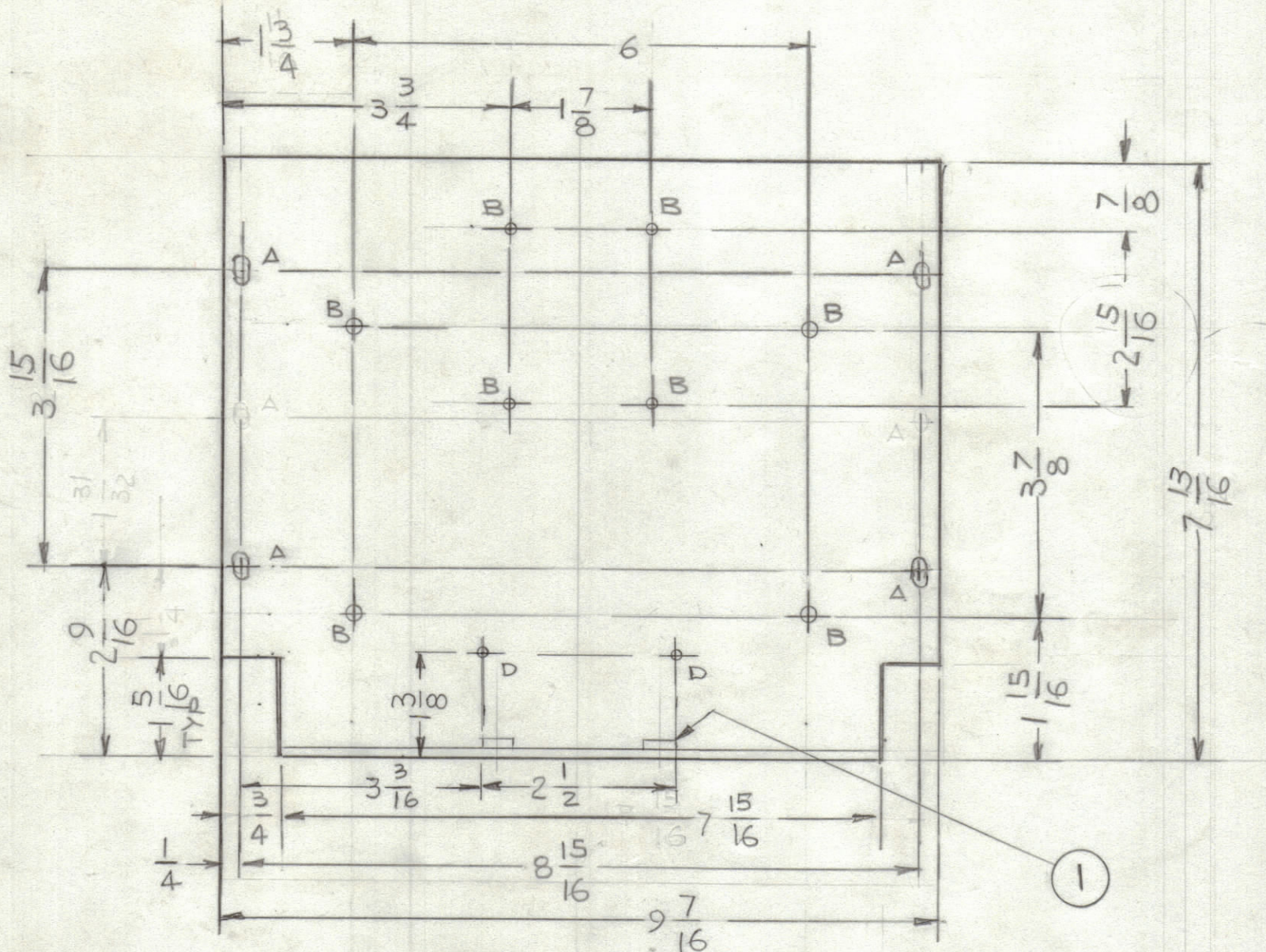
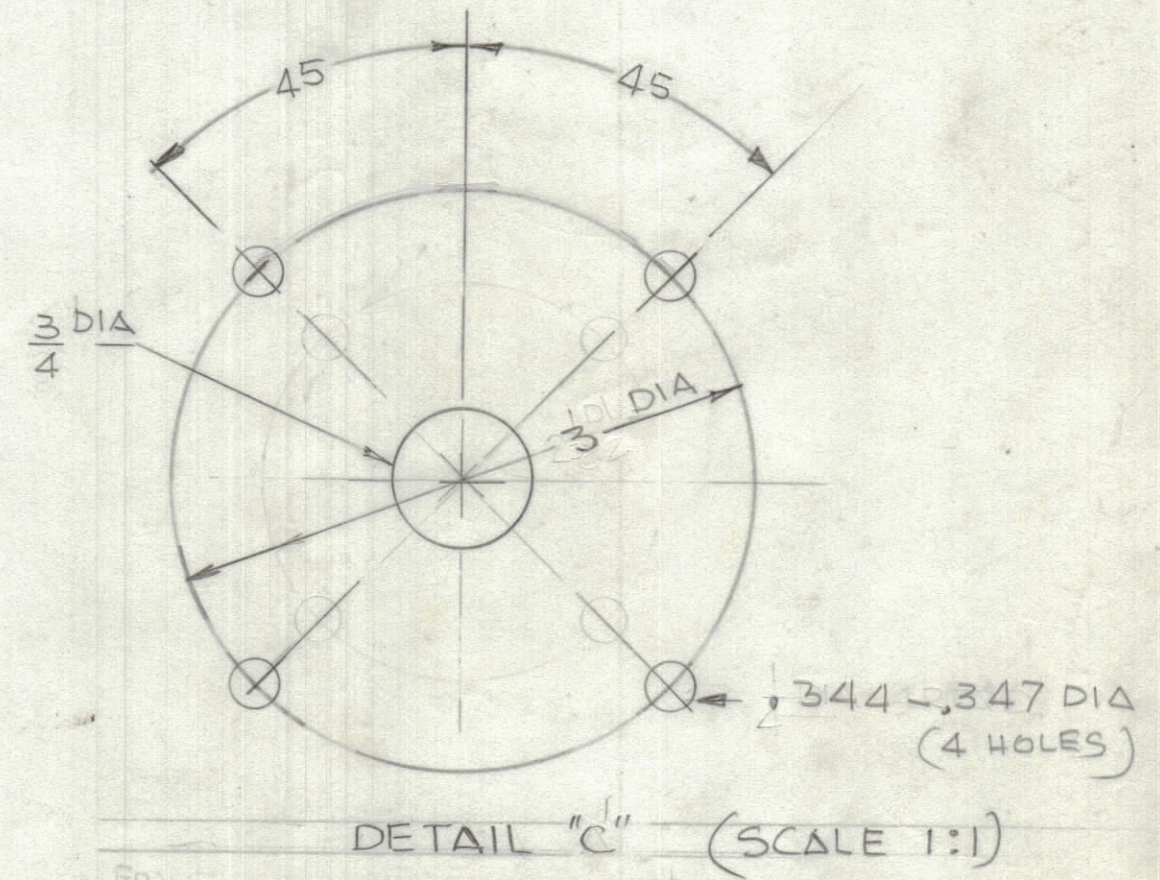


REVISIONS						
ZONE	LTR	DESCRIPTION	DATE	E.M.N.O	DRAFT	CHKD APPD
	A	1 3/4 WAS 1 1/16 & 2 5/16 WAS 2 15/16	9.19.89		G.D.L.	



- HOLES
- A - 1/4 - 5/16 4 REQ'D
 - B - 7/32 DIA 8 REQ'D
 - C - SEE DETAIL
 - D - 1/8 DIA 2 REQ'D



QTY. REQ.	ITEM	PART NO.	DESCRIPTION	SYMBOL
4	1	NT 124-1/4-20	NUT, ROUND	

LIST OF MATERIAL

THE TECHNICAL MATERIEL CORP.
MAMARONECK, NEW YORK

UNLESS OTHERWISE SPECIFIED DIMENSIONS ARE IN INCHES AND INCLUDE CHEMICALLY APPLIED OR PLATED FINISHES	FINAL APPROVAL <i>DB</i>	DATE 1/22/90
TOLERANCES ON	MECH. DES.	DATE
DECIMALS	ELECT. DES.	DATE
.X ± .05	CHECKED	DATE
.XX ± .01	DRAWN	DATE
.XXX ± .005	G.D.L.	8-15-84

QTY / UNIT	MODEL USED ON	ASS'Y NO.
	VRA-30 FIBERGLASS	
APPLICATION		
CODE		

NOTICE TO PERSONS RECEIVING THIS DRAWING

THE TECHNICAL MATERIEL CORPORATION claims proprietary right in the material disclosed hereon. This drawing is issued in confidence for engineering information only and may not be reproduced or used to manufacture anything shown hereon without permission from THE TECHNICAL MATERIEL CORPORATION to the user. This drawing is loaned for mutual assistance and is subject to recall at any time.

MATERIAL	.081THK ALUM. 5052-H32
FINISH	S404 YEL-IRIDITE

SIZE	CODE IDENT. NO.	DWG NO.	ISSUE
C	82679	MS 7213	A
SCALE	1/2	SHEET	OF

3.0075 L2
18
18