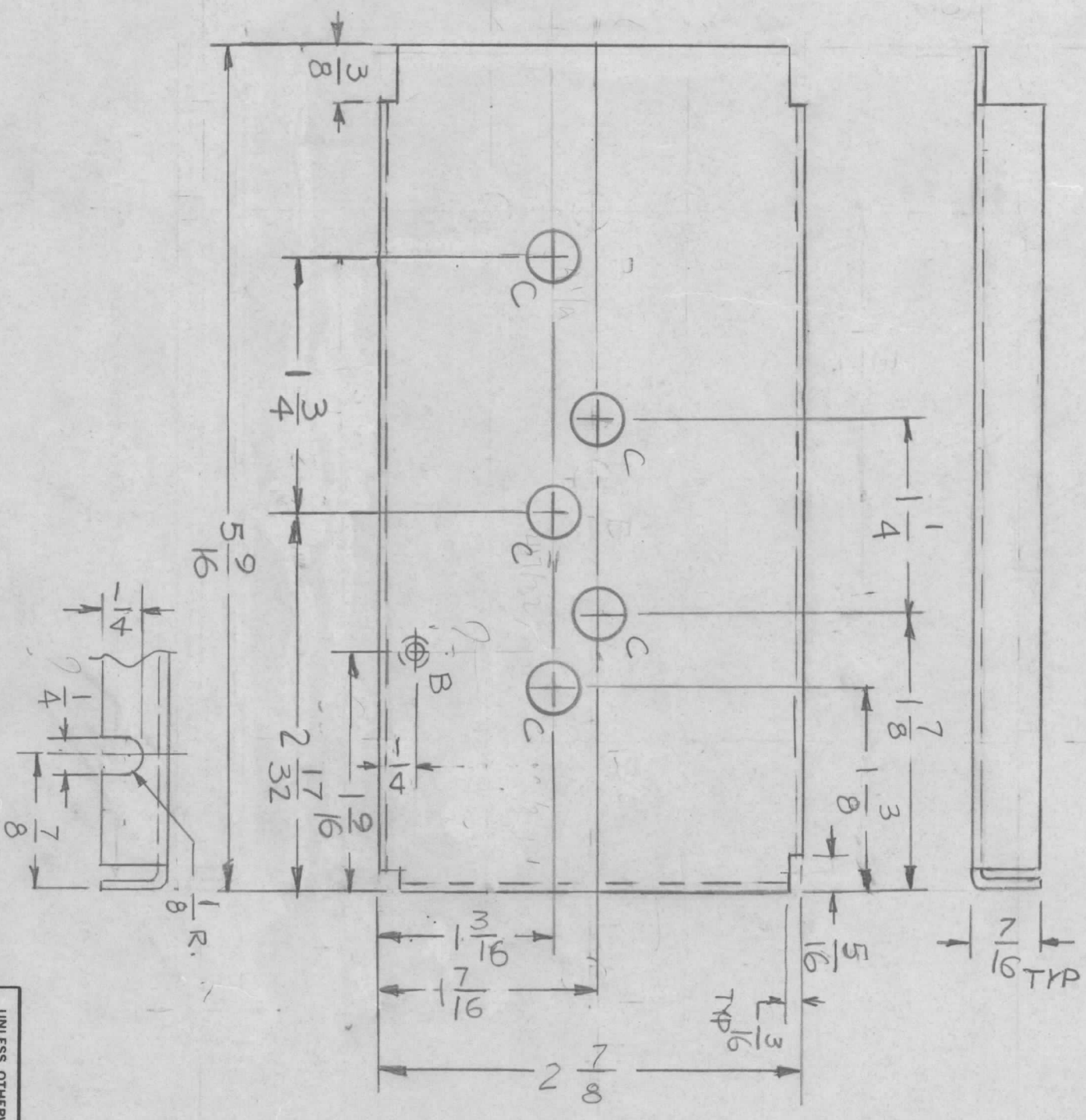


REVISIONS			
EMN NO	DRAFT	CHKD	ZONE
			LTR
DESCRIPTION			DATE
ORIGINAL RELEASE FOR PROD.			1-3-90
			APPROVED



HOLEL:
 A - 5/32 DIA
 B - .161-.164 DIA
 C - 3/8 DIA

2 REQ'D
 5 REQ'D

REQ'D ITEM	PART NUMBER	DESCRIPTION	SYM.
1		COVER, PC BOARD (2x5)	

FINAL APPROVAL		DATE	
MECH. DES.		DATE	
ELECT. DES.		DATE	
CHECKED		DATE	
DRAWN	G.D.L.	DATE	2-1-89

LIST OF MATERIAL

THE TECHNICAL MATERIEL CORP.
 MAMARONECK, NEW YORK

QTY / UNIT	1	MODEL USED ON	MMX-4	ASS'Y NO.	
APPLICATION					
CODE					

UNLESS OTHERWISE SPECIFIED DIMENSIONS ARE IN INCHES AND INCLUDE CHEMICALLY APPLIED OR PLATED FINISHES					
DECIMALS	X	± .05	TOLS.	FRACTIONS	1/64
	XX	± .01		ANGLES	90° .30'
	XXX	± .005			
MATERIAL .051 THK					
ALUM 5052-H32					
FINISH S404					
YEL IRIDITE					

SIZE	B	CODE IDENT. NO.	82679	DWG NO.	MS 7205	ISSUE	2
SCALE	1:1	SHEET		OF			

NOTICE TO PERSONS RECEIVING THIS DRAWING
 THE TECHNICAL MATERIEL CORPORATION claims proprietary right in the material disclosed hereon. This drawing is issued in confidence for engineering information only and may not be reproduced or used to manufacture anything shown hereon without permission from THE TECHNICAL MATERIEL CORPORATION to the user. This drawing is loaned for mutual assistance and is subject to recall at any time.