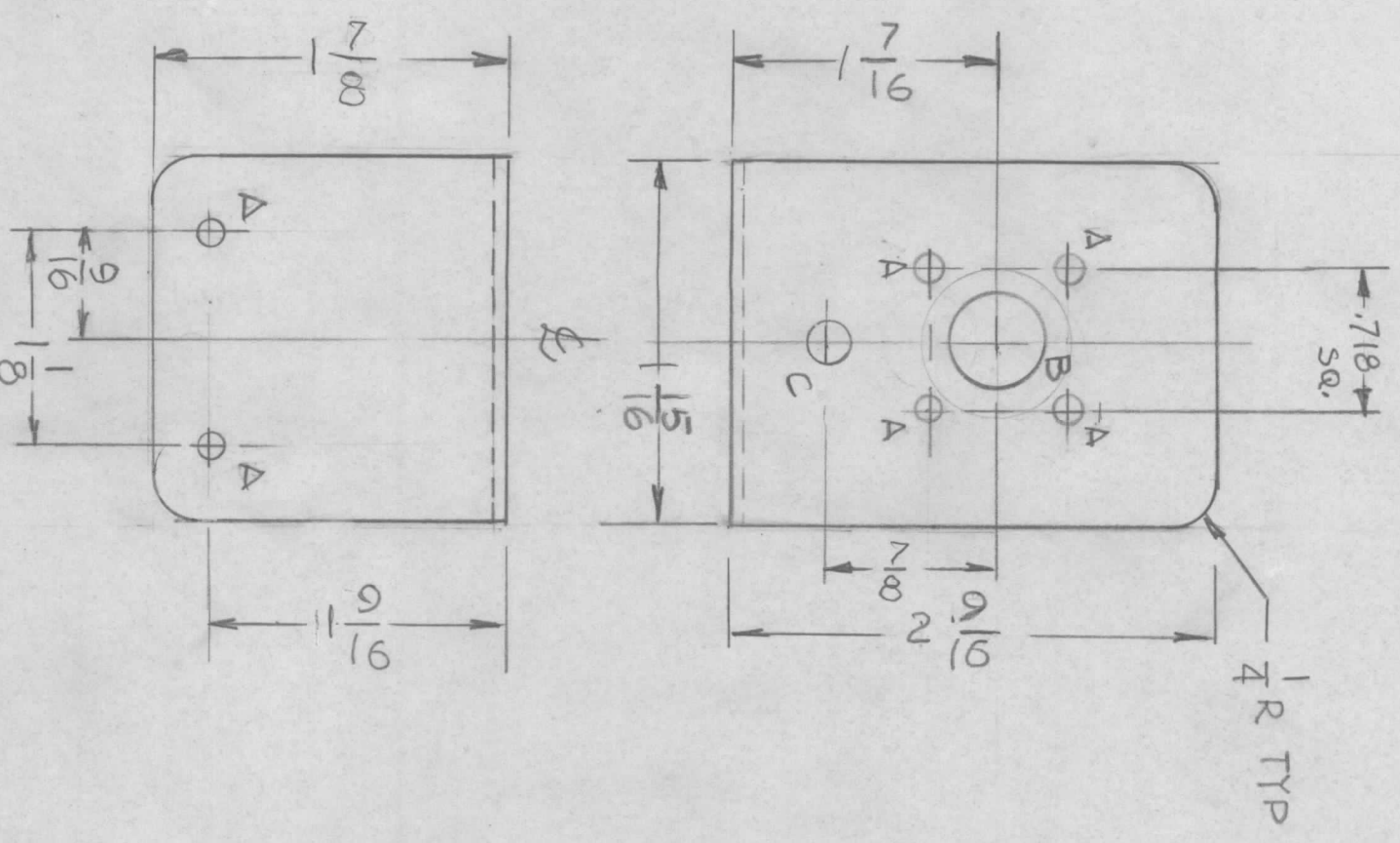


REVISIONS							
EM.N NO.	DRAFT	CHKD	ZONE	LTR	DESCRIPTION	DATE	APPROVED



HOLES:
 A - 9/64 DIA 6 REQ'D
 B - 5/8 DIA
 C - 9/32 DIA

Handwritten signature: J. B. ...

QTY / UNIT MODEL USED ON ASS'Y NO.

APPLICATION CODE

VZA -

NOTICE TO PERSONS RECEIVING THIS DRAWING
 THE TECHNICAL MATERIEL CORPORATION claims proprietary right in the material disclosed hereon. This drawing is issued in confidence for engineering information only and may not be reproduced or used to manufacture anything shown hereon without permission from THE TECHNICAL MATERIEL CORPORATION to the user. This drawing is loaned for mutual assistance and is subject to recall at any time.

UNLESS OTHERWISE SPECIFIED DIMENSIONS ARE IN INCHES AND INCLUDE CHEMICALLY APPLIED OR PLATED FINISHES	
DECIMALS	FRACTIONS
.X ± .05	1/64
.XX ± .01	ANGLES
.XXX ± .005	90° .30'

REQ'D	ITEM	PART NUMBER	DESCRIPTION	SYM.

FINISH: COPPER

MATERIAL: .061 THK COPPER

SCALE: 1:1

SIZE: B

CODE IDENT. NO.: 82679

DWG NO.: MS 7202

SHEET: OF

ISSUE: