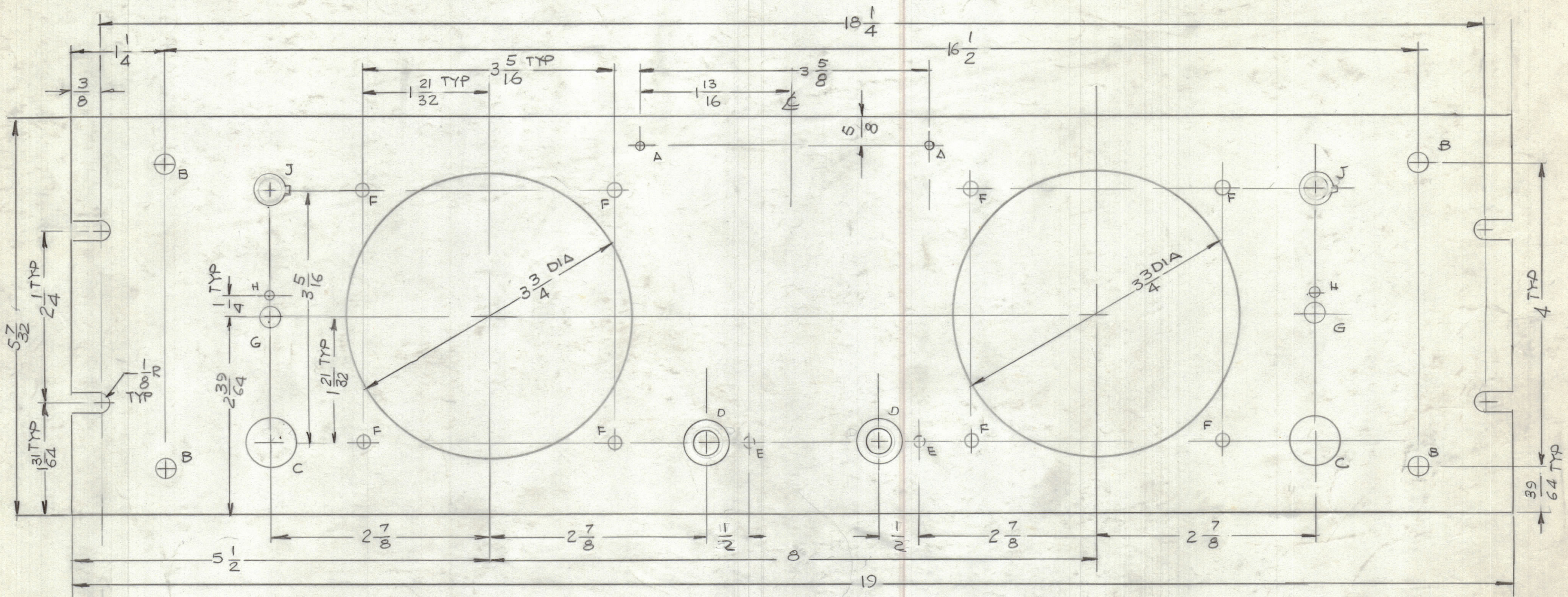


REVISIONS						
ZONE	LTR	DESCRIPTION	DATE	E.M.N.O.	DRAFT	CHKD
		ORIGINAL RELEASE FOR PROD.	9/24/85		GDL	
	A	ADD COUNTER BORE 2 D HOLES	12/3/87		SB	



MACHINING

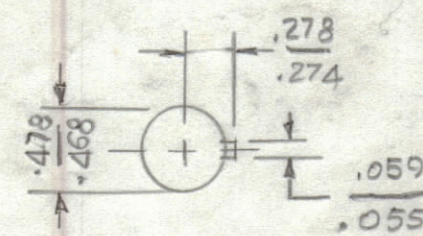
- 2 - MILL ALL EDGES
- 3 - HOLES MUST BE DRILLED
- 4 - PANEL MUST BE FREE OF ALL MACHINING MARK

FINISH NOTES:

- S404 - YELL IRIDITE
- S114 - ZING CHOMATE PRIMER } FRONT EDGES ONLY
- S115 - SMOOTH GRAY ENAMEL }

HOLES

- A - #47 DRILL 2 REQ'D
- B - #7 DRILL 4 REQ'D
- D - .312 DIA HOLES COUNTER BORE .625 DIA 3/32" Deep
- 5/8 C - .300 DIA 2 REQ'D
- E - 1/8 DIA X 1/8 DEEP (REAR OF PANEL)
- F - #16 DRILL 8 REQ'D
- G - #17/64 DIA 2 REQ'D
- H - #11/64 DIA 2 REQ'D
- J - SEE DETAIL J



DETAIL "J"

REF: LD 316 B

QTY. REQ.	ITEM	PART NO.	DESCRIPTION	SYMBOL
LIST OF MATERIAL				
THE TECHNICAL MATERIEL CORP. MAMARONECK, NEW YORK				
PANEL, FRONT BSP-2D(S)				
FINAL APPROVAL MECH. DES. ELECT. DES. CHECKED DRAWN			DATE 9/24/85 DATE DATE 9-24-85	
MATERIAL 3/16 THK ALUM. 2024-T3			SIZE CODE IDENT. NO. DWG NO. C 82679 MS 7178	
FINISH SEE NOTES			ISSUE A	
SCALE 1:1			SHEET OF	

QTY / UNIT	MODEL USED ON	ASS'Y NO.
APPLICATION		
CODE		
NOTICE TO PERSONS RECEIVING THIS DRAWING THE TECHNICAL MATERIEL CORPORATION claims proprietary right in the material disclosed hereon. This drawing is issued in confidence for engineering information only and may not be reproduced or used to manufacture anything shown hereon without permission from THE TECHNICAL MATERIEL CORPORATION to the user. This drawing is loaned for mutual assistance and is subject to recall at any time.		