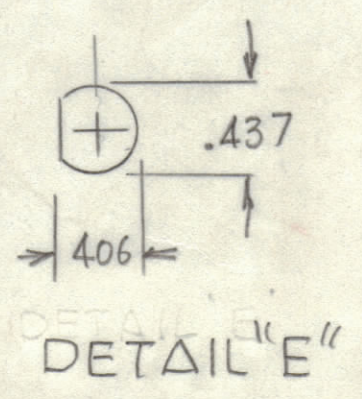


REVISIONS				
E.M.N.O	DRAFT	CHKD	ZONE	LTR



A - .161 - .164 DIA	4 REQ'D
B - 11/64 DIA	4 REQ'D
C - .191 - .194 DIA	2 REQ'D
D - 61/64 DIA	10 REQ'D
E - SEE DETAIL	4 REQ'D
F - 9/64 DIA	4 REQ'D



8.375
7.625
= 7.50

8.375

UNLESS OTHERWISE SPECIFIED:
 1. USE MATERIAL THICKNESS FOR MAXIMUM RADIUS ON ALL BENDS.
 2. ALL ANGULAR BENDS 90 DEGREES.
 3. REMOVE ALL BURRS AND SHARP EDGES.
 4. MOUNT INSERTS AFTER FINISHING.

QTY. REQ.	ITEM	PART NO.	DESCRIPTION	SYMBOL
4	Z	NT 129 440 4	NUT ROUND	A
2	I	NT 129 0632-4	NUT ROUND	C

LD 3152

FINAL APPROVAL	DATE
<i>GDL</i>	3/7/84
MECH. DES.	DATE
ELECT. DES.	DATE
CHECKED	DATE
DRAWN	DATE
<i>GDL</i>	

LIST OF MATERIAL
 THE TECHNICAL MATERIEL CORP.
 MAMARONECK, NEW YORK

PANEL REAR
 AMC 8-2x4

QTY / UNIT	MODEL USED ON	ASSY NO.
1	AMC -2x4	
APPLICATION		
	CODE	

MATERIAL	063THK ALUM 5052-H32
FINISH	S404 YEL-IRIDITE

SIZE	CODE	IDENT NO.	DWG NO.	ISSUE
D	82679	M5	7144	1

NOTICE TO PERSONS RECEIVING THIS DRAWING
 THE TECHNICAL MATERIEL CORPORATION claims proprietary right in the material disclosed herein. This drawing is issued in confidence for engineering information only and may not be reproduced or used to manufacture anything shown hereon without permission from THE TECHNICAL MATERIEL CORPORATION to the user. This drawing is loaned for mutual assistance and is subject to recall at any time.