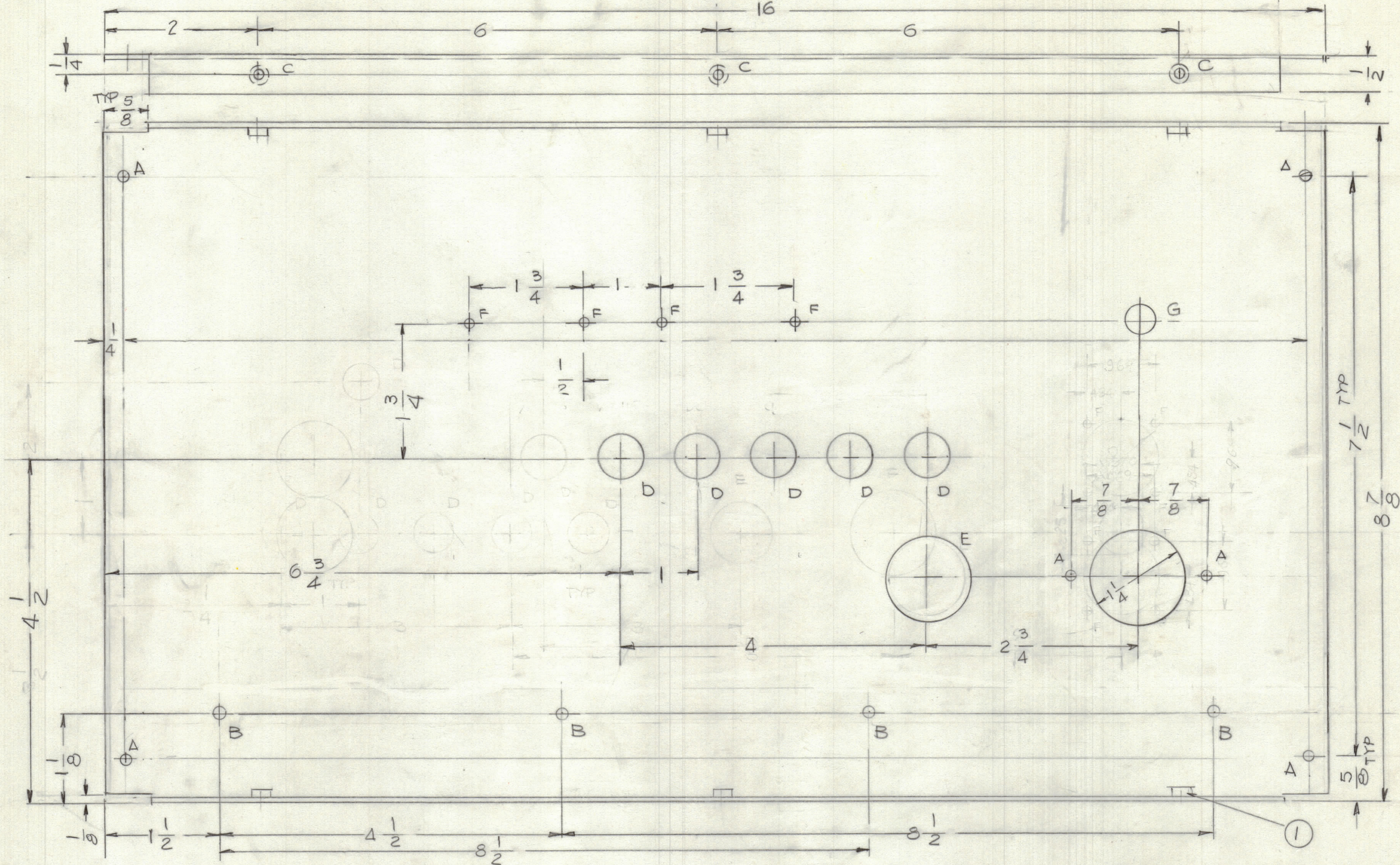


REVISIONS						
ZONE	LTR	DESCRIPTION	DATE	E.M.N.NO	DRAFT	CHKD APPD

BOTTOM THE SAME



- HOLE
- A - 11/64 DIA 6 REQ'D
 - B - 13/64 DIA 4 REQ'D
 - C - .191-.194 DIA 6 REQ'D
 - D - 5/8 DIA 6 REQ'D
 - E - 1 1/8 DIA
 - F - 9/64 DIA 8 REQ'D
 - G - 13/32 DIA

UNLESS OTHERWISE SPECIFIED:

- USE MATERIAL THICKNESS FOR MAXIMUM RADIUS ON ALL BENDS.
- ALL ANGULAR BENDS 90 DEGREES.
- REMOVE ALL BURRS AND SHARP EDGES.
- MOUNT INSERTS AFTER FINISHING.

QTY / UNIT	MODEL USED ON	ASS'Y NO.
APPLICATION		
CODE		

NOTICE TO PERSONS RECEIVING THIS DRAWING
 THE TECHNICAL MATERIEL CORPORATION claims proprietary right in the material disclosed hereon. This drawing is issued in confidence for engineering information only and may not be reproduced or used to manufacture anything shown hereon without permission from THE TECHNICAL MATERIEL CORPORATION to the user. This drawing is loaned for mutual assistance and is subject to recall at any time.

UNLESS OTHERWISE SPECIFIED DIMENSIONS ARE IN INCHES AND INCLUDE CHEMICALLY APPLIED OR PLATED FINISHES

TOLERANCES ON

DECIMALS	FRACTIONS
.X ± .05	± 1/64
.XX ± .01	ANGLES
.XXX ± .005	± 0° - 30'

MATERIAL 064 THK ALUM. 5052-H32
 FINISH 5520 BLU/GRAY TEX. VINYL

QTY. REQ.	ITEM	PART NO.	DESCRIPTION	SYMBOL
6	1	NT J29 0632-4	NUT, ROUND	C
LIST OF MATERIAL				
FINAL APPROVAL				
MECH. DES.				
ELECT. DES.				
CHECKED				
DRAWN G.D.L.				
DATE 4-18-83				
THE TECHNICAL MATERIEL CORP. MAMARONECK, NEW YORK				
REAR PLATE				
SIZE	CODE	IDENT. NO.	DWG NO.	ISSUE
C	82679	MS	7139	
SCALE	1:1	SHEET		OF