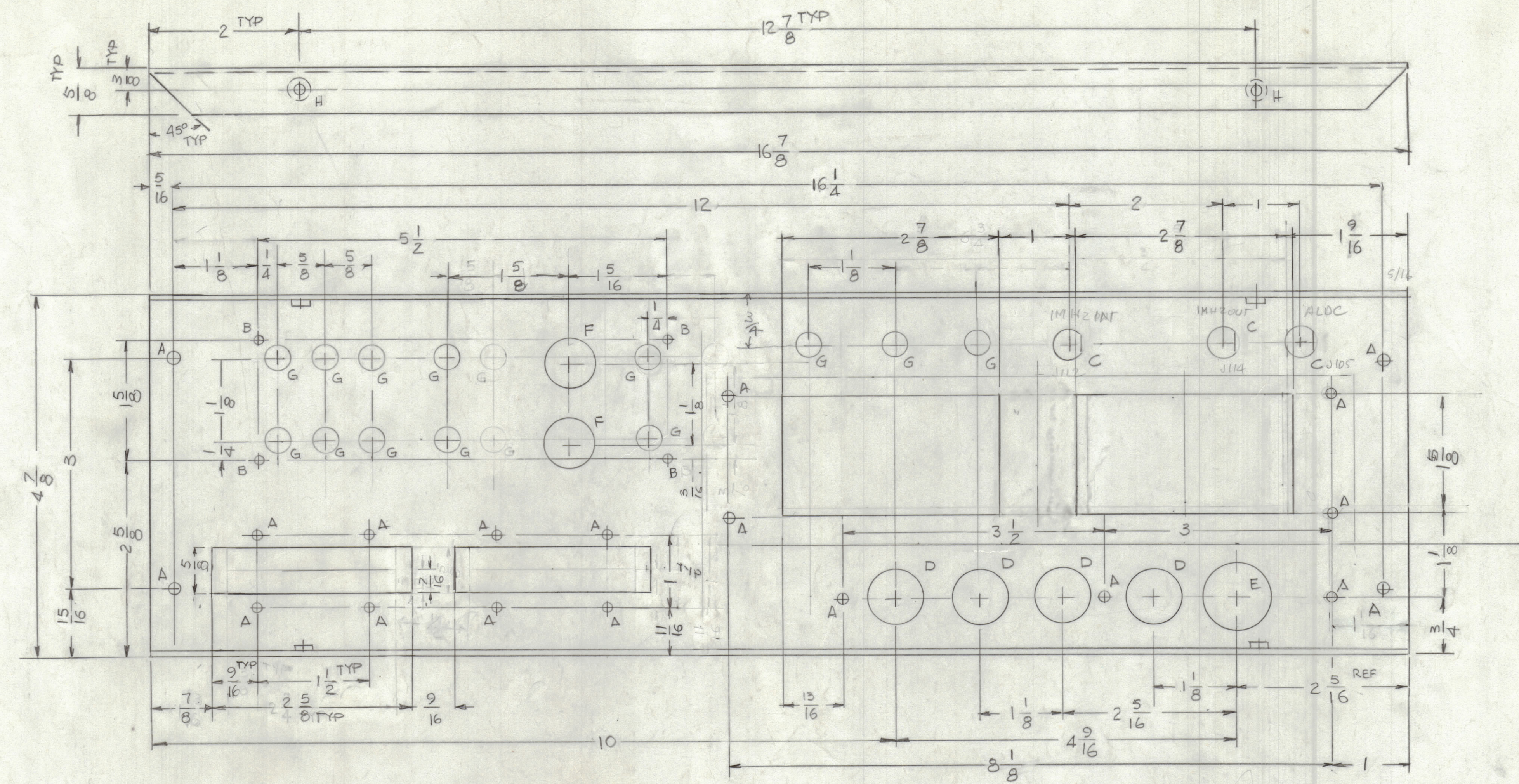
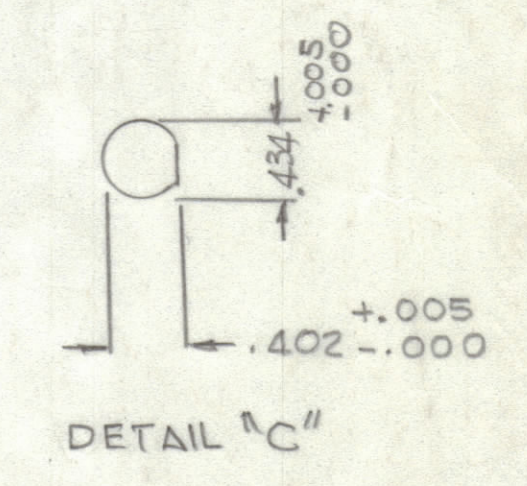


REVISIONS							
E.M.N.O	DRAFT	CHKD	ZONE	LTR	DESCRIPTION	DATE	APPROVED
	X5				REDDRAWN W/CHANGE	9-13-85	
	X6				DIMS CUT OUT CHANGE	A.G.B.B	



- HOLES
- A- 11/64 DIA 12 REQ'D
 - B- 9/64 DIA 4 REQ'D
 - C- SEE DETAIL 5 REQ'D
 - D- 3/4 DIA 2 REQ'D
 - E- 15/16 DIA 2 REQ'D
 - F- 11/16 DIA 2 REQ'D
 - G- 3/8 DIA 15 REQ'D
 - H- .191-.194 DIA 4 REQ



REF. LD3161

4, 1 INT 129-0632-4

QTY. REQ.	ITEM	PART NO.	DESCRIPTION	SYMBOL
4	1	NT129-0632-4	NUT, ROUND	H

LIST OF MATERIAL				
FINAL APPROVAL	DATE	THE TECHNICAL MATERIEL CORP. MAMARONECK, NEW YORK REAR, PLATE		
MECH. DES.	DATE			
ELECT. DES.	DATE			
CHECKED	DATE			
DRAWN	DATE			
MATERIAL .063 THK ALUM 5052-H32		SIZE	CODE IDENT NO.	DWG NO.
FINISH S404 YEL. IRIDITE		D	82679	MS7123
		SCALE	SHEET	OF

QTY / UNIT	MODEL USED ON	ASS'Y NO.
APPLICATION		
CODE		

NOTICE TO PERSONS RECEIVING THIS DRAWING
THE TECHNICAL MATERIEL CORPORATION claims proprietary right in the material disclosed herein. This drawing is issued in confidence for engineering information only and may not be reproduced or used to manufacture anything shown herein without permission from THE TECHNICAL MATERIEL CORPORATION to the user. This drawing is loaned for mutual assistance and is subject to recall at any time.

1. 524
1. 437
3 090

12.875
.625
12.250

750
375
1.125

1
3-000
1.437
1.563

1500-1
1725
2825

1 1/16

1500-1
1725
2825