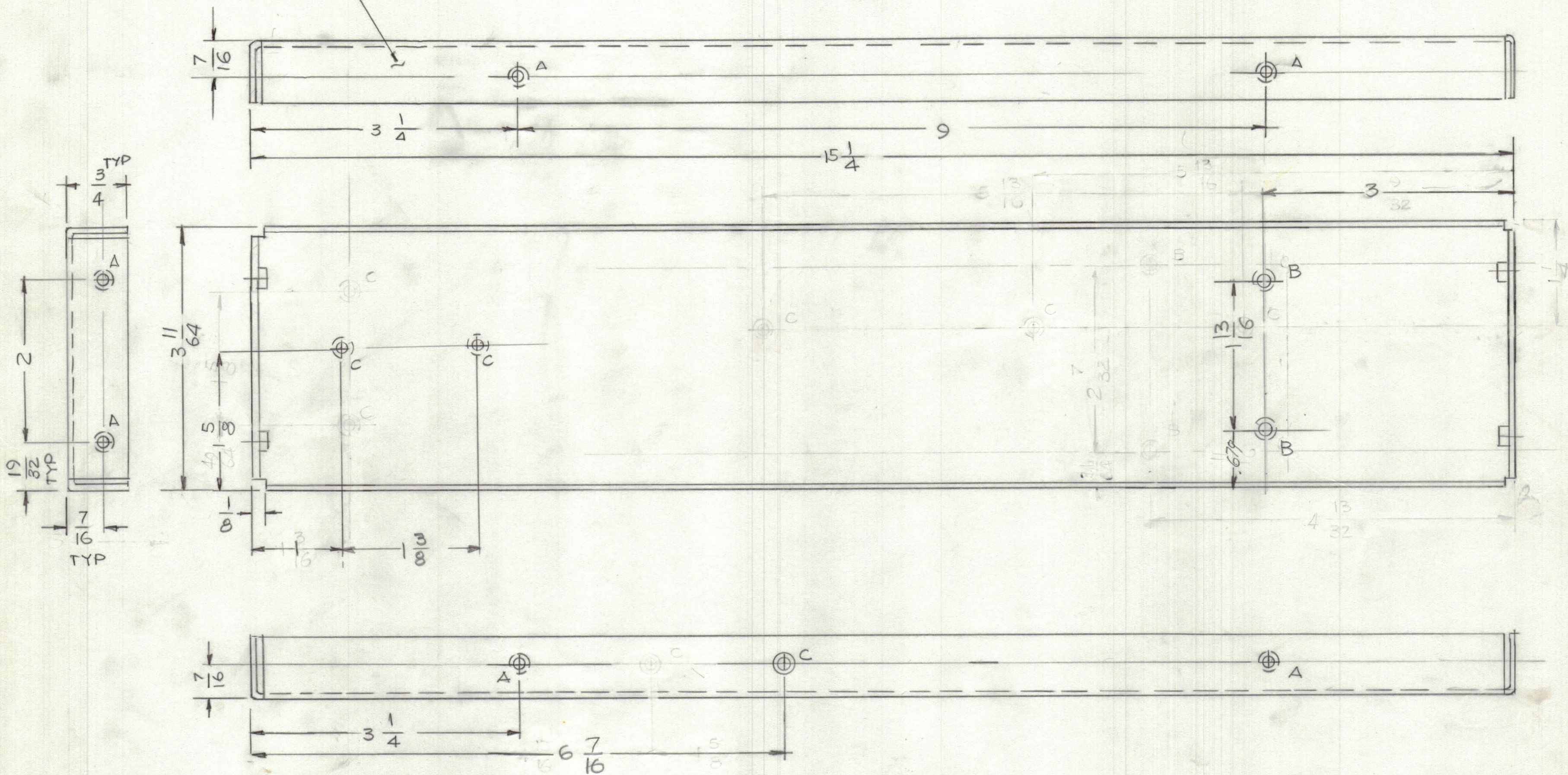


REVISIONS						
ZONE	LTR	DESCRIPTION	DATE	E.M.N.NO	DRAFT	CHKD APPD
	Ø	ORIGINAL RELEASE FOR PRODUCTION	7/29/83			

MARK TMC P/NO 1/8 HIGH GOTHIC WITH LATEST REV. LETTER



HOLES  
 A - .191 - .194 DIA 8 REQ'D  
 B - .140 DIA C'SHK 82° TO 296 DIA. 2 REQ  
 C - 120 DIA C'SHK 82° TO 323 DIA 3 REQ

- UNLESS OTHERWISE SPECIFIED:
1. USE MATERIAL THICKNESS FOR MAXIMUM RADIUS ON ALL BENDS.
  2. ALL ANGULAR BENDS 90 DEGREES.
  3. REMOVE ALL BURRS AND SHARP EDGES.
  4. MOUNT INSERTS AFTER FINISHING.

1	MAC-2	
QTY / UNIT	MODEL USED ON	ASS'Y NO.
APPLICATION		
	CODE	

NOTICE TO PERSONS RECEIVING THIS DRAWING  
 THE TECHNICAL MATERIEL CORPORATION claims proprietary right in the material disclosed hereon. This drawing is issued in confidence for engineering information only and may not be reproduced or used to manufacture anything shown hereon without permission from THE TECHNICAL MATERIEL CORPORATION to the user. This drawing is loaned for mutual assistance and is subject to recall at any time.

UNLESS OTHERWISE SPECIFIED DIMENSIONS ARE IN INCHES AND INCLUDE CHEMICALLY APPLIED OR PLATED FINISHES

TOLERANCES ON	
DECIMALS	FRACTIONS
.X ± .05	± 1/64
.XX ± .01	ANGLES
.XXX ± .005	± 0° -30'

MATERIAL 063 THK  
 ALUM 5052-H32  
 FINISH SA04  
 YEL IRIDITE

B	1	NT129-0632-4	NOT ROUND	A
QTY. REQ.	ITEM	PART NO.	DESCRIPTION	SYMBOL
LIST OF MATERIAL				
FINAL APPROVAL			DATE	
MECH. DES.			DATE	
ELECT. DES.			DATE	
CHECKED			DATE	
DRAWN			DATE	
THE TECHNICAL MATERIEL CORP. MAMARONECK, NEW YORK				
PLATE, RIGHT SIDE				
SIZE	CODE IDENT.NO	DWG NO.	ISSUE	
C	82679	MS7111	Ø	
SCALE	1:1	SHEET	OF	