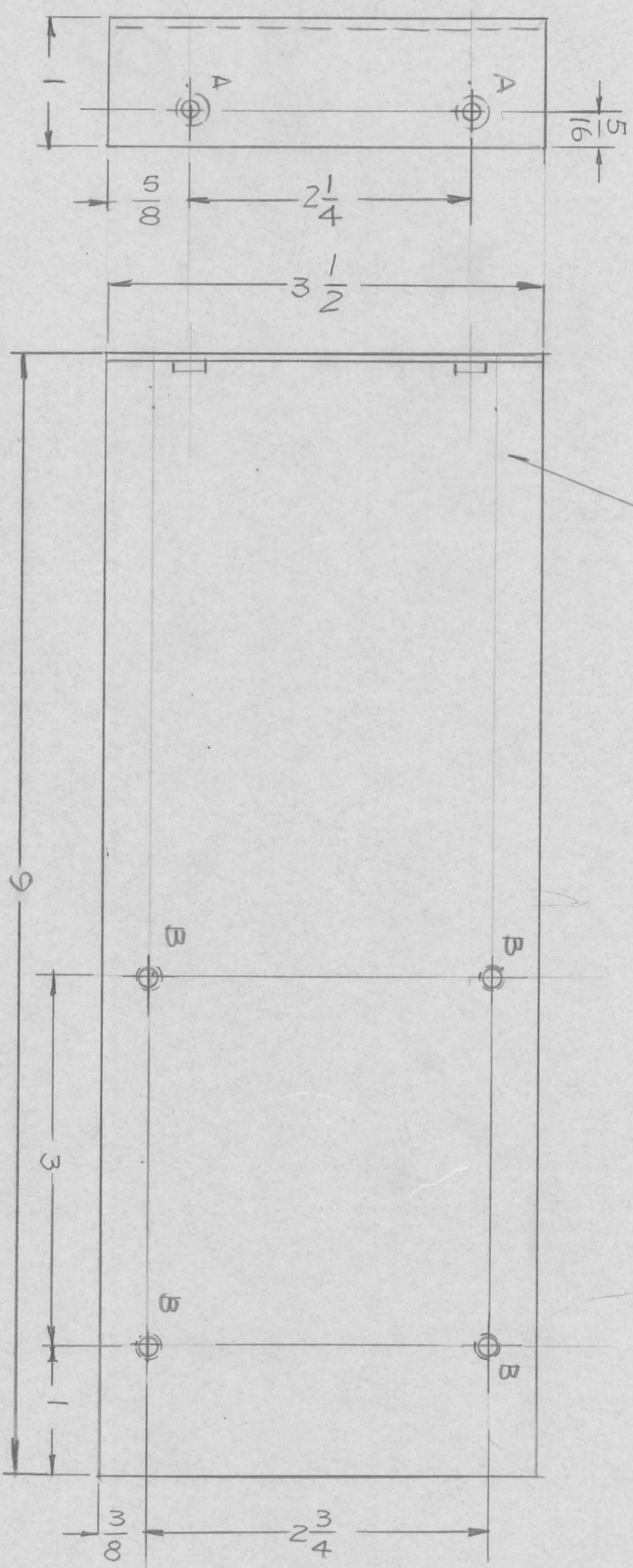


REVISIONS							
EM/N NO.	DRAFT	CHKD	ZONE	LTR	DESCRIPTION	DATE	APPROVED
	GDL				ORIGINAL RELEASE FOR PROD.	1-11-83	

MARK TMC P/NO 1/8 HIGH  
GOTHIC W/LATES REV,  
LETTER



HOLE S  
A - .250 .254 DIA 2 REQ'D  
B - DRILL & TAP FOR 10-32 THD

UNLESS OTHERWISE SPECIFIED:

1. USE MATERIAL THICKNESS FOR MAXIMUM RADIUS ON ALL BENDS.
2. ALL ANGULAR BENDS 90 DEGREES.
3. REMOVE ALL BURRS AND SHARP EDGES.
4. MOUNT INSERTS AFTER FINISHING.

2	AX 5257	RCST-2
2	AX 5254	RCST-2
APPLICATION		
QTY / UNIT	MODEL USED ON	ASS'Y NO.

UNLESS OTHERWISE SPECIFIED DIMENSIONS ARE IN INCHES AND INCLUDE CHEMICALLY APPLIED OR PLATED FINISHES	DECIMALS	TOLS.	FRACTIONS	ANGLES
	.X ± .05	.XX ± .01	1/64	90° 30'
	.XXX ± .005			

FINISH	ALUM 5052-H32
FINISH	YEL. 121D1TE
FINISH	S404

2	1	NT129-1032-4	NUT, ROUND	B
REQ'D ITEM PART NUMBER DESCRIPTION SYM.				
ENG. S. DE MARCO LIST OF MATERIAL				

FINAL APPROVAL	DATE	THE TECHNICAL MATERIEL CORP.
<i>S. De Marco</i>	2-2-83	MAMARONECK, NEW YORK
MECH. DES.	DATE	
G.D.L.	1-11-83	
ELECT. DES.	DATE	
CHECKED	DATE	
G.D.L.	8-2-82	
DRAWN	DATE	
G.D.L.		

NOTICE TO PERSONS RECEIVING THIS DRAWING  
THE TECHNICAL MATERIEL CORPORATION claims proprietary right in the material disclosed hereon. This drawing is issued in confidence for engineering information only and may not be reproduced or used to manufacture anything shown hereon without permission from THE TECHNICAL MATERIEL CORPORATION to the user. This drawing is loaned for mutual assistance and is subject to recall at any time.

CHASSIS SUPPORT

SIZE	CODE IDENT. NO.	DWG NO.	ISSUE
B	82679	MS 7103	Ø
SCALE	1" = 1"	SHEET	OF