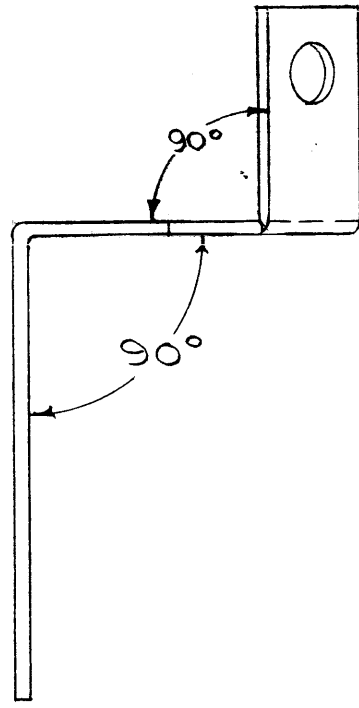
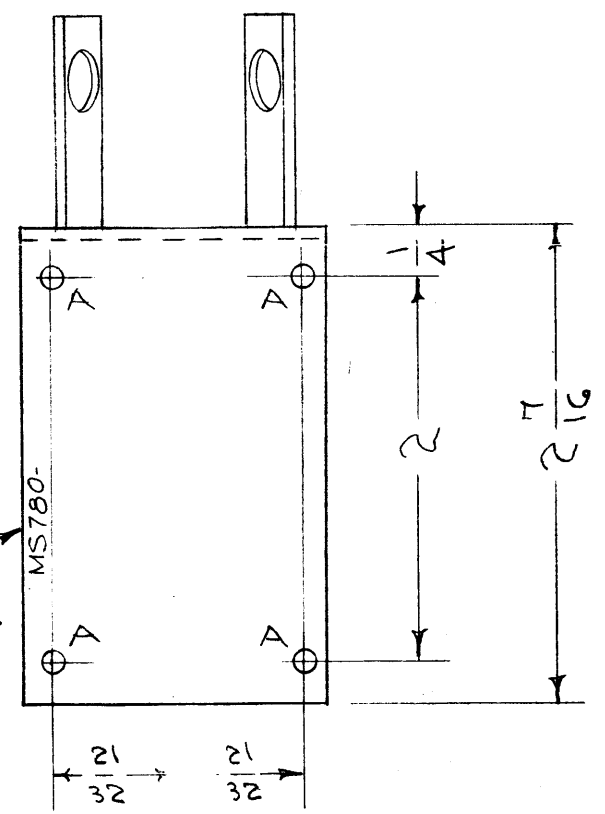


- A - 1/8 (.125) DIA. 4 HOLES REQ.
- B - 1/32 (.344) " 1 " "
- C - 1/64 (.156) " 2 " "
- D - 15/64 (.234) " 2 " "



METAL STAMP TMC PART NO.
1/8 HIGH GOTHIC, WITH
LATEST REV. LETTER.

NOTICE TO PERSONS RECEIVING THIS DRAWING
THE TECHNICAL MATERIEL CORPORATION claims proprietary right in the material disclosed hereon. This drawing is issued in confidence for engineering information only and may not be reproduced or used to manufacture anything shown hereon without permission from THE TECHNICAL MATERIEL CORPORATION to the user. This drawing is loaned for mutual assistance and is subject to recall at any time.
Property of:
THE TECHNICAL MATERIEL CORPORATION
MAMARONECK, NEW YORK

ISSUE	ITEM	CHANGED FROM	DATE	CH. NO.	DRAFTS	CHECKER	ENG. APP.
E	1	HOLE "B" DIAM WAS 9/16 "B" HOLE DIM. WAS 13/16 W/LAT. REV. LET. ADDED TO HOLE LEGEND "D" ADD.	7-28-66	16654	RME	JCS	WJ
D	2	2 "B" HOLES CHNG TO "D" ON HOLE LEGEND "D" ADD.	5-14-64	11381	MB		WJ
C	1	TOP & SIDE VIEW REVISED, 2 (B) HOLES ADDED	1-12-61	6175	G.D.L.		EMN
B	1	S-404 WAS S-101	12/14/59	1001	AB		EMN
A	1	B HOLE WAS 9/32 C HOLES ADDED	8/23/56	1		MB	WJ

TOLERANCES		SCALE:	
DEC. DIM. ±		1	RTF-2 P/A
FRAC. DIM. ± 1/64		1	RTF
ANGULAR DIM. ± 1/2			

REQ. PER UNIT	MODEL	PROJECT NO.	ASS'Y. NO.	DATE
1	RTF-2 P/A			11-20-57
				1-10-56

REF. DWG. LD-285

REQ. ITEM	PART NO.	DESCRIPTION	SYMBOL
	.081	THE TECHNICAL MATERIEL CORP. MAMARONECK, NEW YORK	
	STOCK SIZE		
	ALUMINUM	PLATE, NEUTRALIZER	
	MATERIAL	POWER AMP.	
52S H32	---	CDR 1/10/56 JAW	WJ
TYPE & TEMPER	HEAT TREAT. SPEC.	DRAWN	CHECKED
S-404 YELLOW IRIDITE		WJ	MS 780 E
FINISH & SPEC. NO.		ELEC. DES. APP.	MECH. DES. APP.