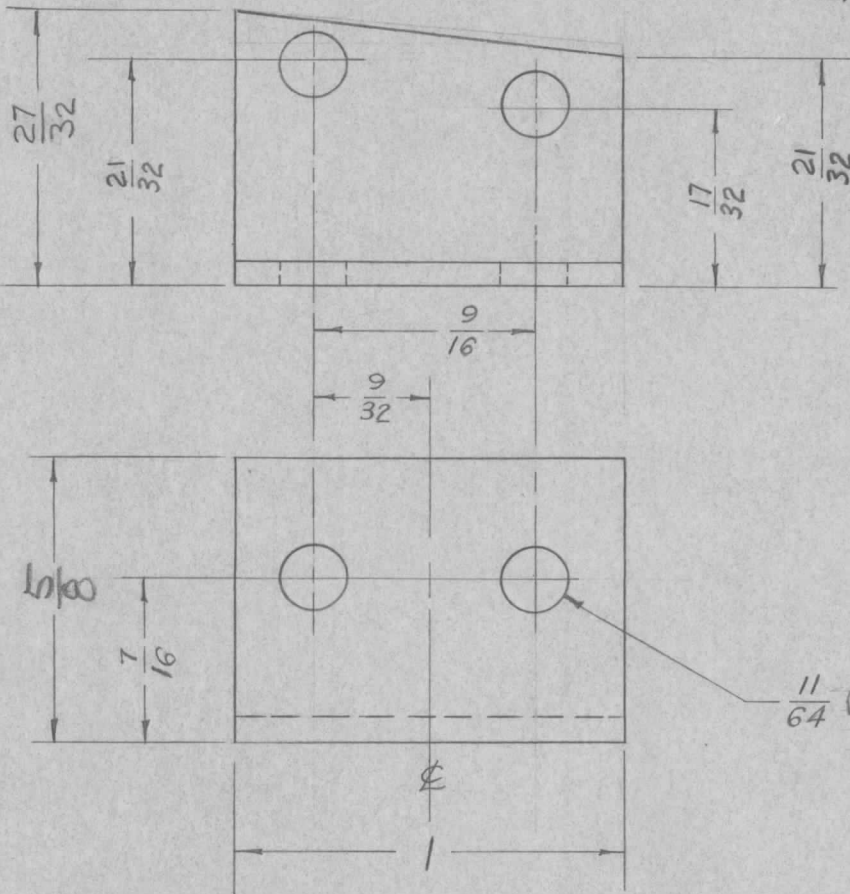


REQ. PER UNIT	USED ON			MS-712	D
	MODEL	ASS'Y. NO.	DATE		
1	RTF		9-26-55		
1	RTF-2	MULT.	11-20-58		



ISSUE	ITEM	CHANGED FROM	DATE	CH. NO.	DRAFTS	CHECKER	ENG. APP.	REQ. ITEM	PART NO.	DESCRIPTION	SYMBOL				
D	2	27/32 WAS 25/32, 17/32 W. 15/32	7.17.64	11882	bsb	@	<i>[Signature]</i>								
	1	DIM 21/32 WAS 19/32 (2 PL.)													
C	1	S404- IRIDITE WAS S101- CAUSTIC DIP	12-7 59	1001	<i>[Signature]</i>		EMN		.064	THE TECHNICAL MATERIEL CORP. MAMARONECK, NEW YORK					
B	1	5/8 WAS 3/4	11/19/58		<i>[Signature]</i>		<i>[Signature]</i>		STOCK SIZE	GEAR BOX, SUPPORT					
A	2	25/32 WAS 23/32	1/10/56	1	<i>[Signature]</i>		<i>[Signature]</i>		ALUMINUM	MULTIPLIER CHASSIS GPT-750					
	1	MAT. WAS .081							MATERIAL						
TOLERANCES			SCALE: 2-X1			52S- H 32		— II —		<i>[Signature]</i>	<i>[Signature]</i>	A. J. J.			
DEC. DIM. ±			MAXIMUM ALLOWABLE TOLERANCES HAVE BEEN DETERMINED AND ANY DEVIATIONS WILL BE CAUSE FOR REJECTION. REMOVE ALL BURRS AND SHARP EDGES			TYPE & TEMPER		HEAT TREAT. SPEC.		DRAWN		CHECKED		FINAL APPROVAL	
FRAC. DIM. ± 1/64						S404 IRIDITE		<i>[Signature]</i> 12/20/55		<i>[Signature]</i>				MS-712	
ANGULAR DIM. ±						FINISH & SPEC. NO.		ELEC. DES. APP.		MECH. DES. APP.					