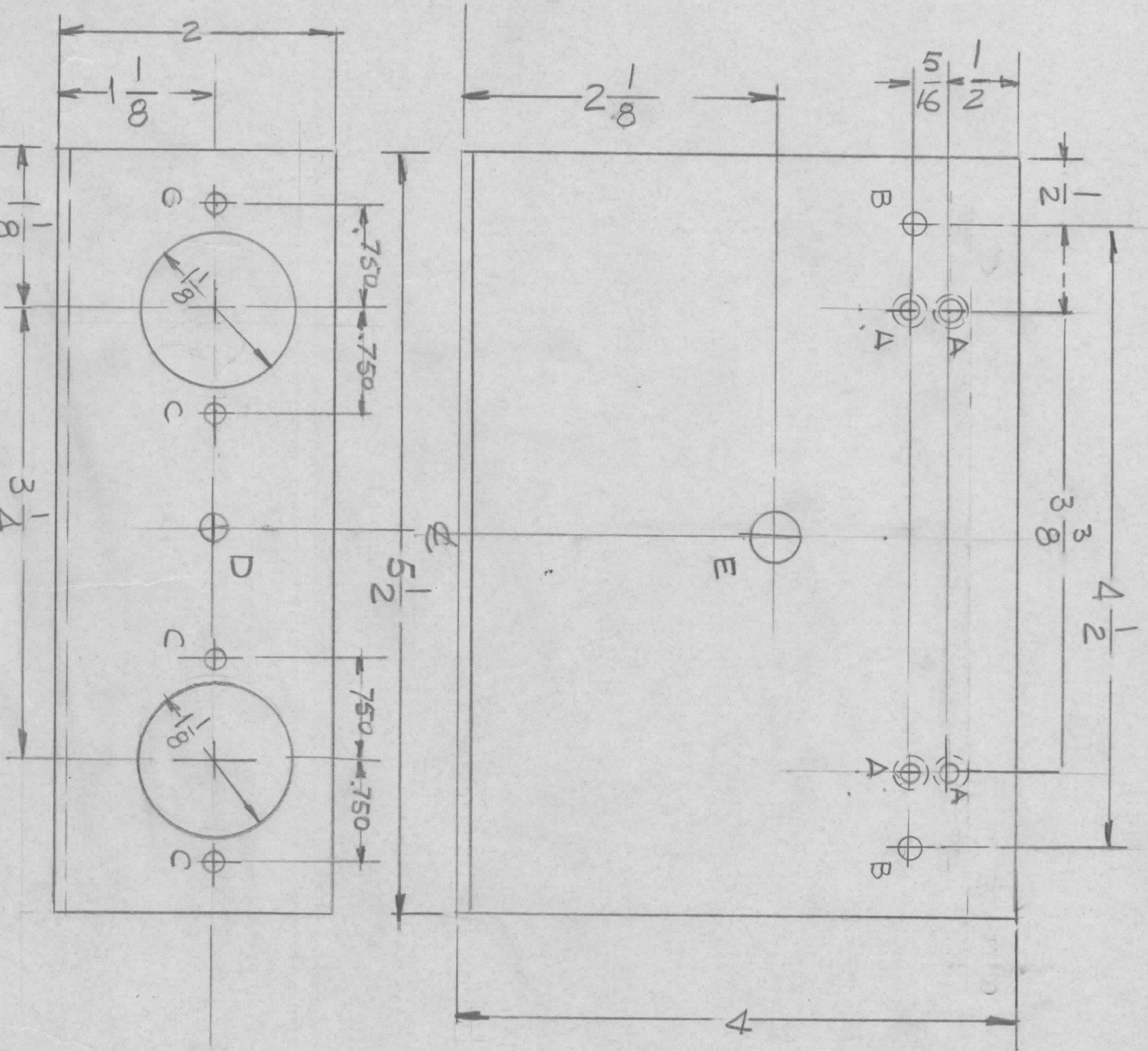


REVISIONS			DATE	APPROVED	
E.M.N. NO.	DRAFT	CHKD	ZONE	LTR	DESCRIPTION



- HOLES**
- A - .120 C/SINK 82° TO .230 DIA 4 REQ'D
  - B - 11/64 DIA 2 REQ'D
  - C - 5/32 DIA 4 REQ'D
  - D - 13/64 DIA -
  - E - 3/8 DIA -

REQ'D ITEM	PART NUMBER	DESCRIPTION	SYM.
LIST OF MATERIAL			

**THE TECHNICAL MATERIEL CORP.**  
MAMARONECK, NEW YORK

**BRACKET MTG RELAY**

FINAL APPROVAL	DATE	SIZE	CODE IDENT. NO.	DWG NO.	ISSUE
MECH. DES.	DATE	B	82679	MS7090	
ELECT. DES.	DATE	SCALE	1:1	SHEET	OF
CHECKED	DATE				
DRAWN	DATE				

UNLESS OTHERWISE SPECIFIED DIMENSIONS ARE IN INCHES AND INCLUDE CHEMICALLY APPLIED OR PLATED FINISHES	DECIMALS .X ± .05 .XX ± .01 .XXX ± .005	FRACTIONS 1/64 TOLS. ANGLES 0° .30'
-------------------------------------------------------------------------------------------------------	--------------------------------------------------	-------------------------------------------------

QTY / UNIT	MODEL USED ON	ASS'Y NO.
1	GPT-10K	
APPLICATION		
CODE		

**NOTICE TO PERSONS RECEIVING THIS DRAWING**  
THE TECHNICAL MATERIEL CORPORATION claims proprietary right in the material disclosed hereon. This drawing is issued in confidence for engineering information only and may not be reproduced or used to manufacture anything shown hereon without permission from THE TECHNICAL MATERIEL CORPORATION to the user. This drawing is loaned for mutual assistance and is subject to recall at any time.

- UNLESS OTHERWISE SPECIFIED:**
- USE MATERIAL THICKNESS FOR MAXIMUM RADIUS ON ALL BENDS.
  - ALL ANGULAR BENDS 90 DEGREES.
  - REMOVE ALL BURRS AND SHARP EDGES.
  - MOUNT INSERTS AFTER FINISHING.

CUT HERE GUARANTEED 4-68