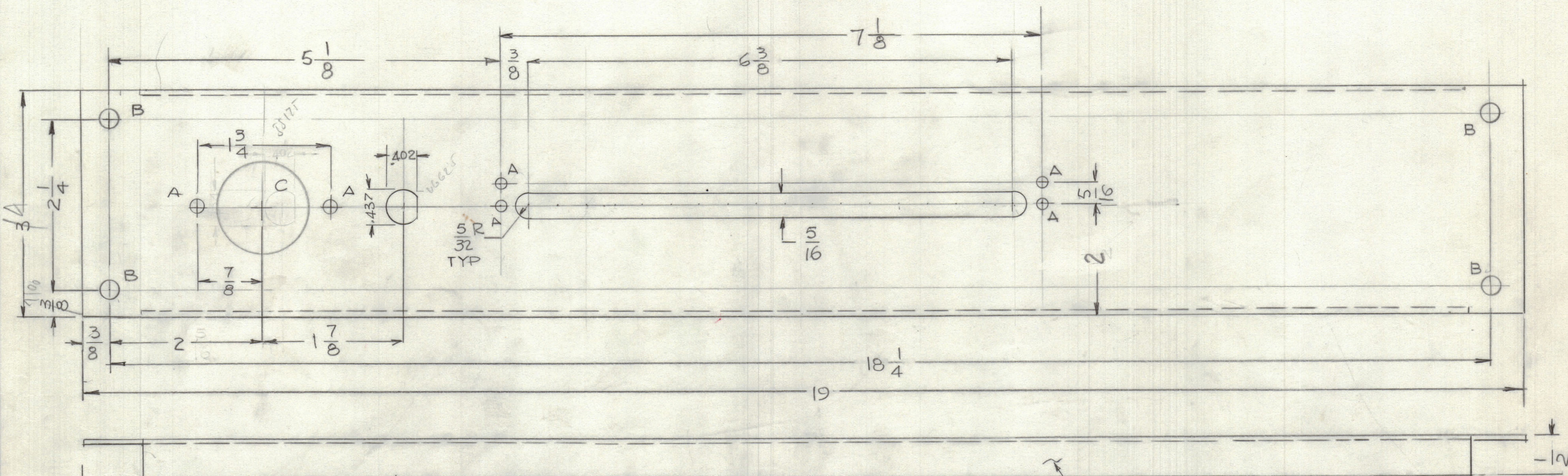


REVISIONS						
ZONE	LTR	DESCRIPTION	DATE	E.M.N.NO	DRAFT	CHKD APPD
	Ø	ORIGINAL RELEASE FOR PRODUCTION	3/29/83	~		

HOLES
 A - 11/64 DIA 6 REQ'D
 B - 1/4 DIA 4 REQ'D
 C - 1 1/4 DIA



REFERENCE

PART NO.	USED ON	
MS7077	LD 3135	SYM-5211-RACK A
MS7077	LD 3139	SYM-5211-RACK B

MARK TMC P/NO 1/8 HIGH GOTHIC WITH LATEST LETTER

UNLESS OTHERWISE SPECIFIED:
 1. USE MATERIAL THICKNESS FOR MAXIMUM RADIUS ON ALL BENDS.
 2. ALL ANGULAR BENDS 90 DEGREES.
 3. REMOVE ALL BURRS AND SHARP EDGES.
 4. MOUNT INSERTS AFTER FINISHING.

QTY / UNIT	MODEL USED ON	ASS'Y NO.
1	SYM-5211-RACK B	
1	SYM-5211-RACK A	

NOTICE TO PERSONS RECEIVING THIS DRAWING
 THE TECHNICAL MATERIEL CORPORATION claims proprietary right in the material disclosed hereon. This drawing is issued in confidence for engineering information only and may not be reproduced or used to manufacture anything shown hereon without permission from THE TECHNICAL MATERIEL CORPORATION to the user. This drawing is loaned for mutual assistance and is subject to recall at any time.

UNLESS OTHERWISE SPECIFIED DIMENSIONS ARE IN INCHES AND INCLUDE CHEMICALLY APPLIED OR PLATED FINISHES

TOLERANCES ON
 DECIMALS .X ± .05
 .XX ± .01
 .XXX ± .005
 FRACTIONS ± 1/64
 ANGLES ± 0°-30'

MATERIAL .064 THK ALUM 5052-H32
 FINISH S404 VEL IRIDITE

QTY. REQ.	ITEM	PART NO.	DESCRIPTION	SYMBOL
LIST OF MATERIAL				
THE TECHNICAL MATERIEL CORP. MAMARONECK, NEW YORK				
PANEL, INTERFACE SYM 5211-RACK A and B				
FINAL APPROVAL		DATE	SIZE CODE IDENT.NO. DWG NO. ISSUE C 82679 MS7077	
MECH. DES.		DATE		
ELECT. DES.		DATE		
CHECKED		DATE		
DRAWN		G.D.L.	DATE	4-9-82
SCALE 1:1			SHEET	OF