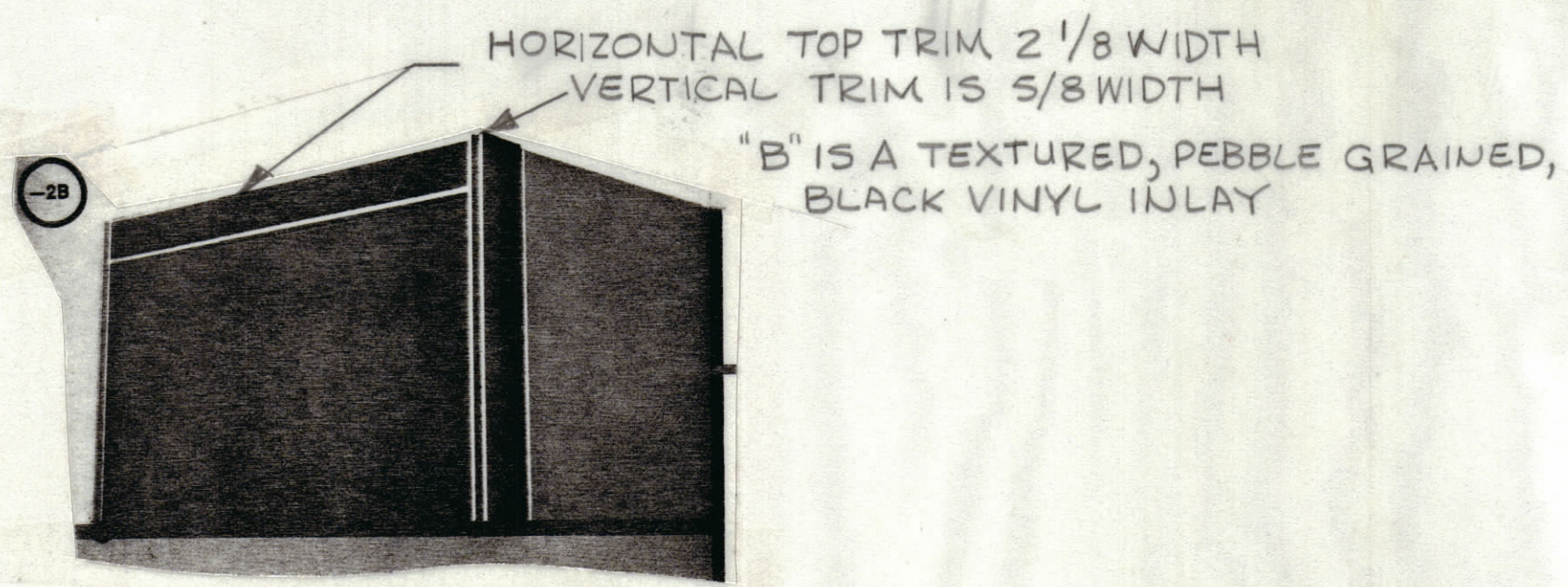
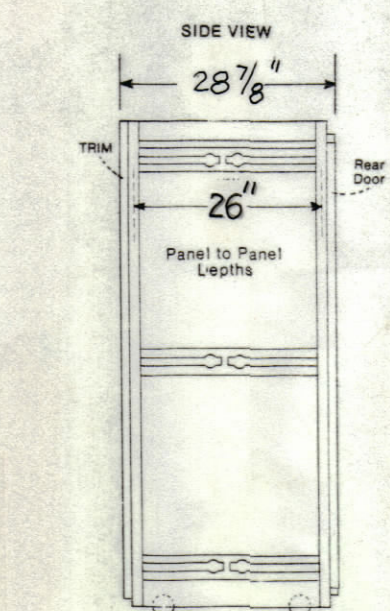
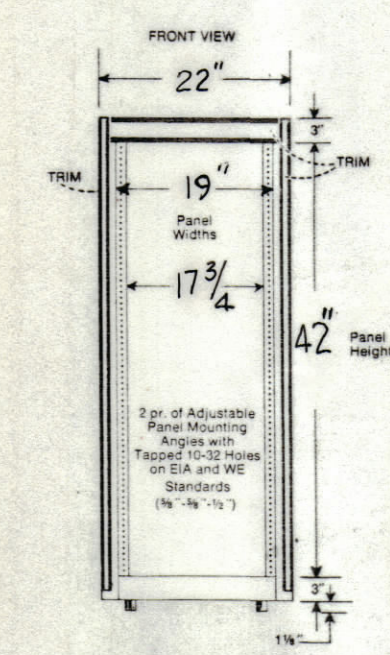


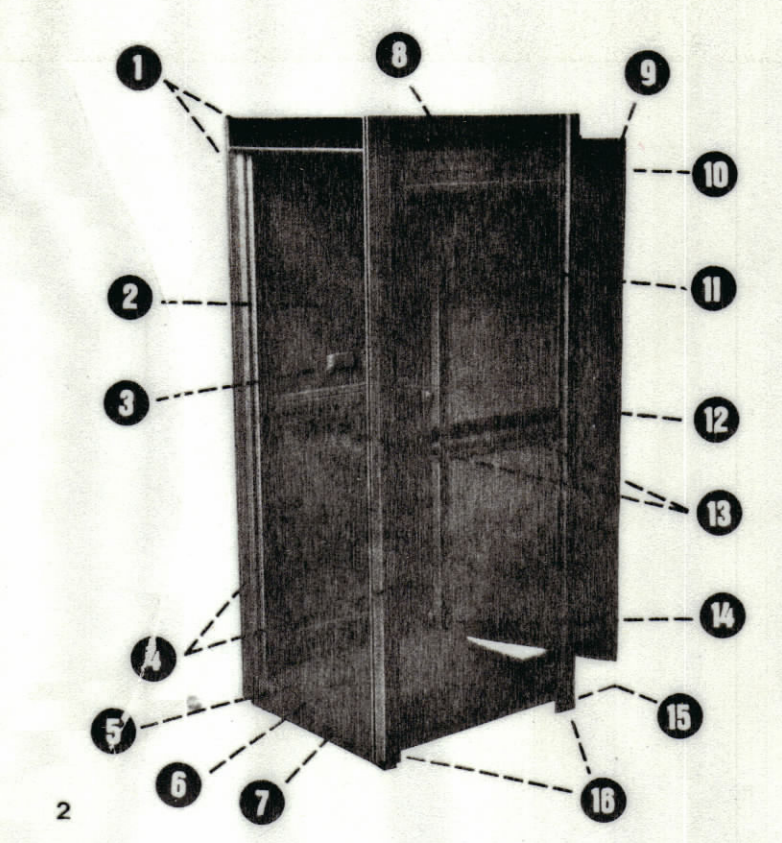
REVISIONS							
E.M.N.NO	DRAFT	CHKD	ZONE	LTR	DESCRIPTION	DATE	APPROVED
	10				ORIGINAL RELEASE	4-1-82	



**TRIMLINE VERTICAL ENCLOSURES**  
BASIC NOMINAL SIZES



- TVA Series Vertical Assembly—Construction Details**  
(1 Frame; 2 End Panels; Rear Door)
1. Trim: extruded anodized aluminum with textured vinyl inlays provide 1" recess for door mounting or panel area
  2. Outside removable flush end panels (16 ga.)
  3. Recessed hand grip for panel removal
  4. 2 pr. panel mounting angles, fully adjustable front to rear with tapped 10-32 holes on EIA & WE Standards (spacing 12 ga.)
  5. 1 1/2" dia. holes for cable entry beneath base
  6. Recessed caster mounting holes
  7. 1 piece formed steel base provides for heavy equipment mounting area and concealed caster mounting (14 ga.)
  8. 1 piece solid top for extra rigidity and squareness (14 ga.)
  9. Foam gasketing (4 sides)
  10. Magnetic catches
  11. Door stiffener channel
  12. Keyed latch and brushed aluminum pull handle
  13. Horizontal cross-brace and panel mounting angle supports
  14. Quick release, spring loaded door hinges (top and bottom)
  15. 1 1/2" dia. knock-outs for rear cable entry underneath rear door
  16. Formed steel uprights (14 ga.) provide 1/2" recess to panel mounting angles
- All features shown are standard in the Trimline TVA Series Welded, formed steel construction



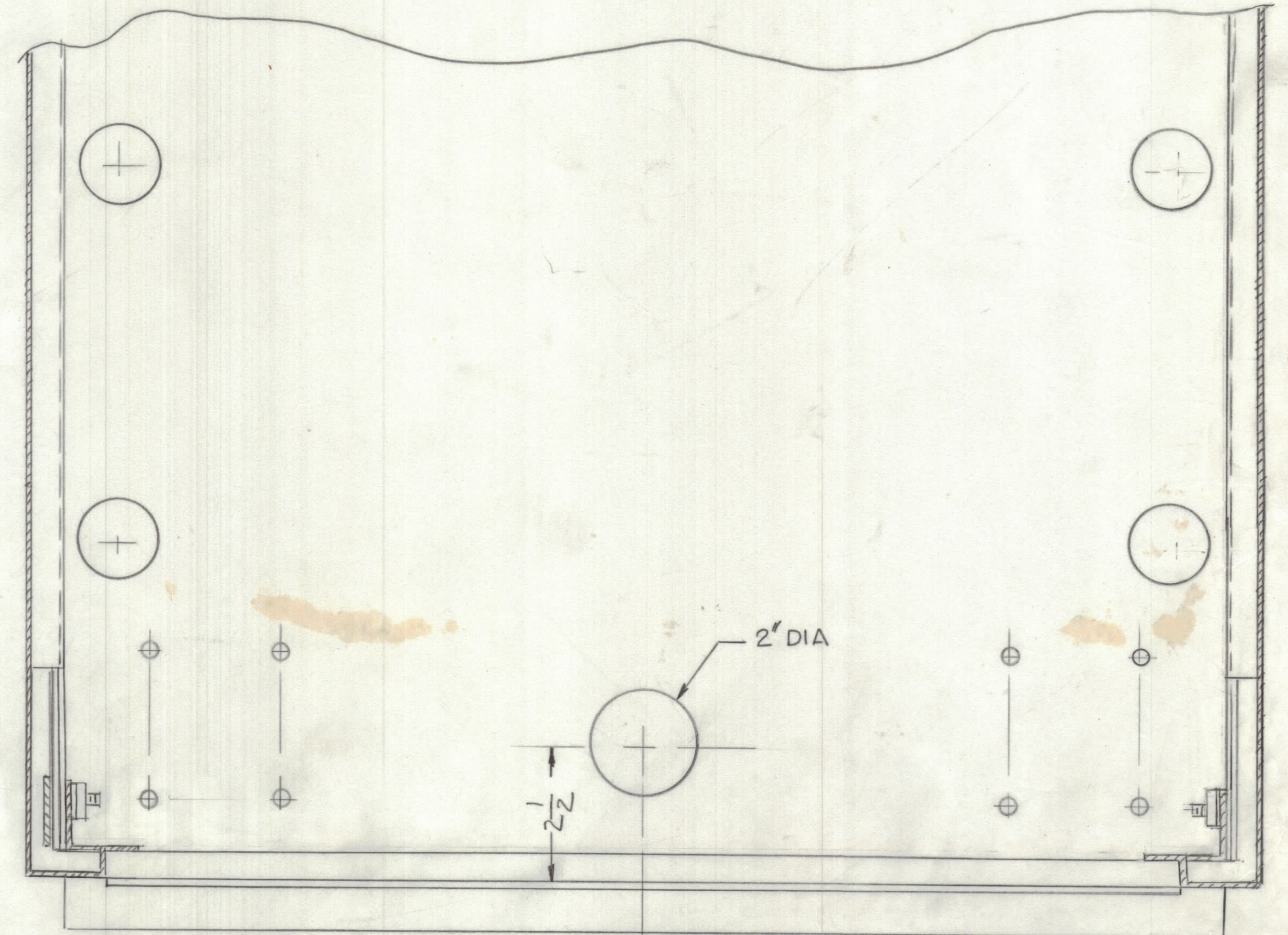
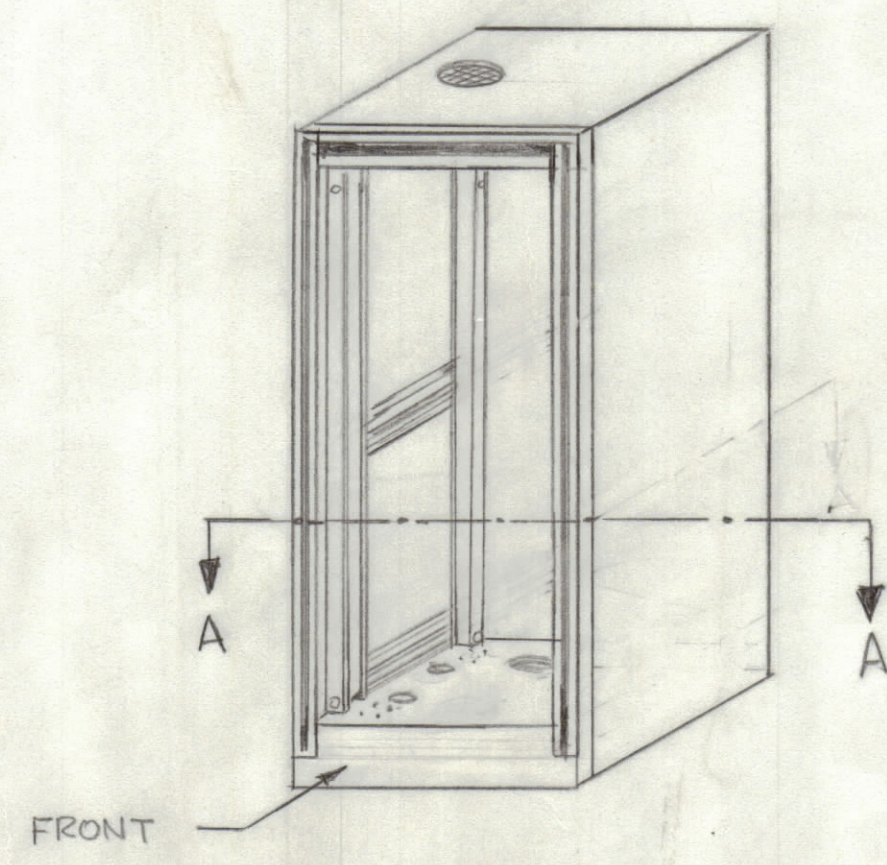
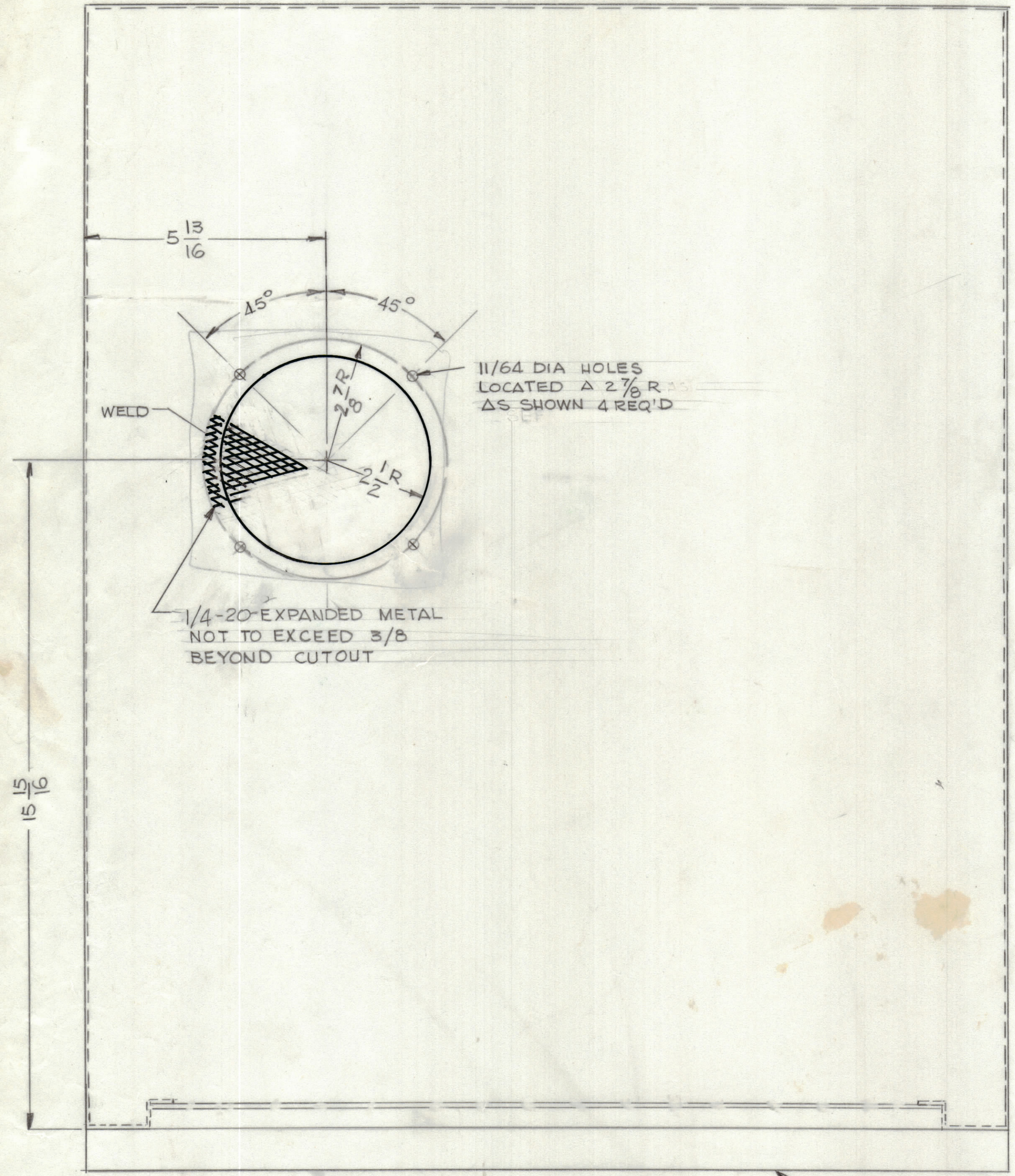
1	HFTM-1K32B	RAK144
QTY / UNIT	MODEL USED ON	ASSY NO.
APPLICATION		
CODE		
<small>NOTICE TO PERSONS RECEIVING THIS DRAWING</small> <small>THE TECHNICAL MATERIEL CORPORATION claims proprietary right in the material disclosed hereon. This drawing is issued in confidence for engineering information only and may not be reproduced or used to manufacture anything shown hereon without permission from THE TECHNICAL MATERIEL CORPORATION to the user. This drawing is loaned for mutual assistance and is subject to recall at any time.</small>		

UNLESS OTHERWISE SPECIFIED DIMENSIONS ARE IN INCHES AND INCLUDE CHEMICALLY APPLIED OR PLATED FINISHES

TOLERANCES ON  
 DECIMALS      FRACTIONS  
 X ± .05          ± 1/64  
 .XX ± .01        ANGLES  
 .XXX ± .005     ± 0° -30'

QTY. REQ.	ITEM	PART NO.	DESCRIPTION	SYMBOL
LIST OF MATERIAL				
FINAL APPROVAL		DATE		<b>THE TECHNICAL MATERIEL CORP.</b> MAMARONECK, NEW YORK  <b>BASIC EQUIPMENT RACK CABINET</b>
MECH. DES.		DATE		
ELECT. DES.		DATE		
CHECKED		DATE		
DRAWN		DATE		SIZE CODE IDENT NO. DWG NO. <b>D 82679 MS7074</b>
SCALE				SHEET 1 OF 2

REVISIONS					DATE	APPROVED
E.M.N.O.	DRAFT	CHKD	ZONE	LTR	DESCRIPTION	
	X				ORIGINAL RELEASE	4-1-82



TOP VIEW (TOP)

SECTION A-A (BOTTOM) (REAR BOTTOM)

MADE BY PREMIER METAL

1	HFTM-1KJ2B	
QTY / UNIT	MODEL USED ON	ASS'Y NO.
APPLICATION		
CODE		

NOTICE TO PERSONS RECEIVING THIS DRAWING  
 THE TECHNICAL MATERIEL CORPORATION claims proprietary right in the material disclosed hereon. This drawing is issued in confidence for engineering information only and may not be reproduced or used to manufacture anything shown hereon without permission from THE TECHNICAL MATERIEL CORPORATION to the user. This drawing is loaned for mutual assistance and is subject to recall at any time.

UNLESS OTHERWISE SPECIFIED DIMENSIONS ARE IN INCHES AND INCLUDE CHEMICALLY APPLIED OR PLATED FINISHES

TOLERANCES ON

DECIMALS	FRACTIONS
.X ± .05	± 1/64
.XX ± .01	ANGLES
.XXX ± .005	± 0° -30'

QTY. REQ.	ITEM	PART NO.	DESCRIPTION	SYMBOL
LIST OF MATERIAL				
THE TECHNICAL MATERIEL CORP. MAMARONECK, NEW YORK				
BASIC EQUIPMENT RACK (MODIFICATION)				
MATERIAL		SIZE CODE IDENT NO. DWG NO.		ISSUE
FINISH		D 82679 MS7074		Ø
SCALE				SHEET 2 OF 2

FINAL APPROVAL	DATE
MECH. DES.	DATE
ELECT. DES.	DATE
CHECKED	DATE
DRAWN	DATE
GDL	4-1-82