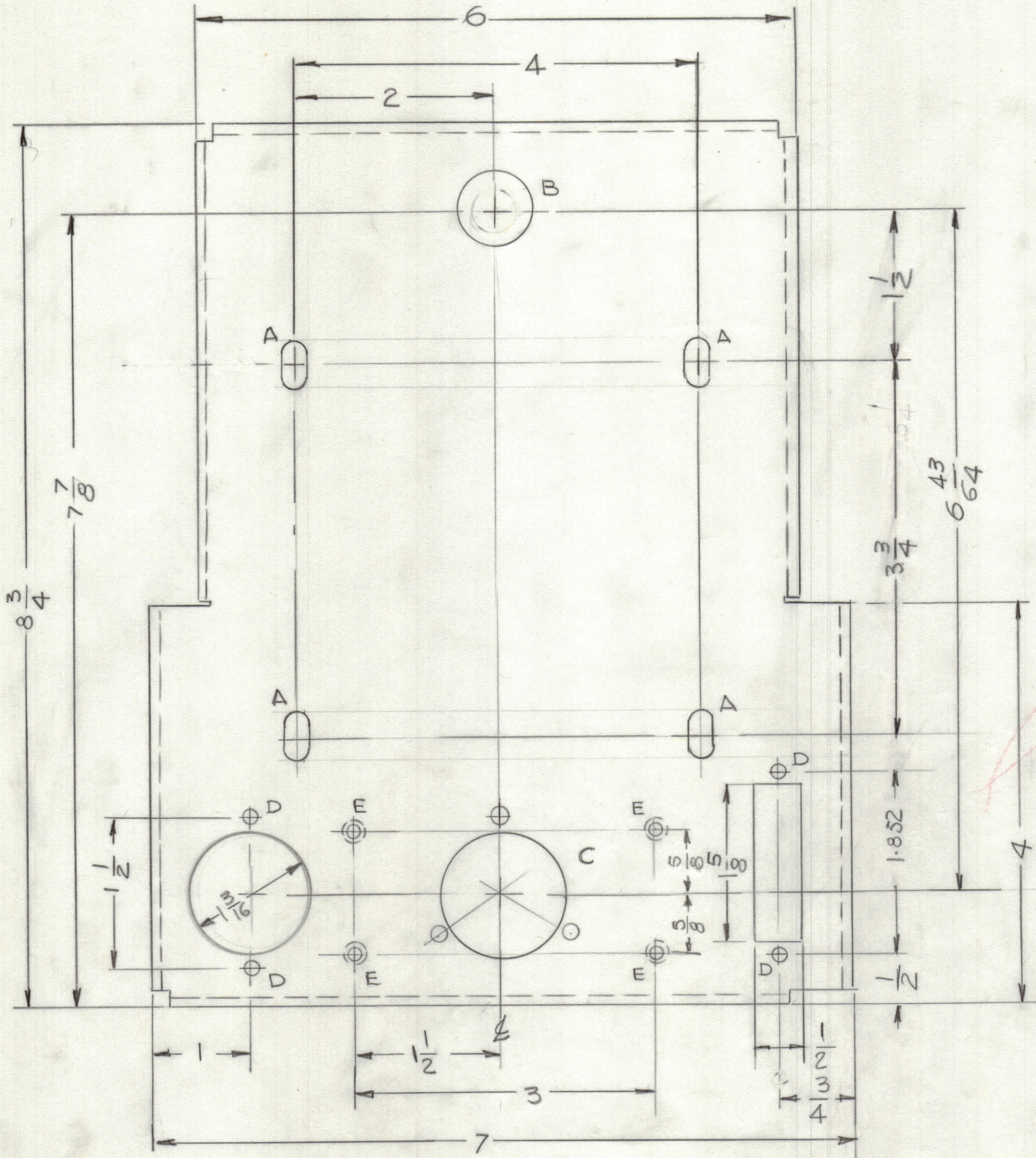
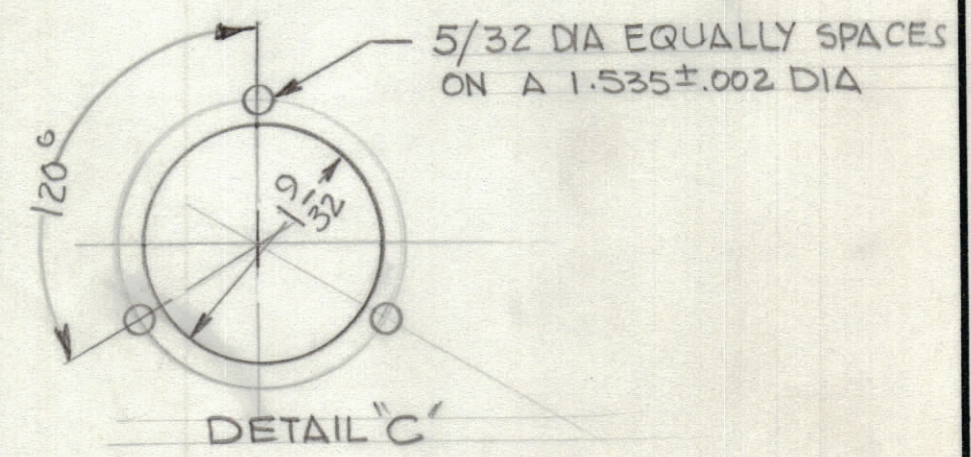


REVISIONS						
ZONE	LTR	DESCRIPTION	DATE	E.M.N.NO	DRAFT	CHKD APPD
		ORIGINAL RELEASE for PRODUCTION	5-1-81			



HOLES  
 A - 1/4 X 1/2 SLOT 4 REQ'D  
 B - 3/4 DIA  
 C - SEE DETAIL  
 D - 5/32 DIA 4 REQ'D  
 E - 191-194 DIA 4 REQ'D



QTY. REQ.	ITEM	PART NO.	DESCRIPTION	SYMBOL
4	1	NT124-0632-A	NUT, ROUND	E

LIST OF MATERIAL

UNLESS OTHERWISE SPECIFIED DIMENSIONS ARE IN INCHES AND INCLUDE CHEMICALLY APPLIED OR PLATED FINISHES

TOLERANCES ON  
 DECIMALS: .X ± .05, .XX ± .01, .XXX ± .005  
 FRACTIONS: ± 1/64  
 ANGLES: ± 0° -30'

MATERIAL 1/8 THK ALUM AL ALLUMINIUM 5052-H32  
 FINISH S404 VEL. IRIDITE

QTY / UNIT	MODEL USED ON	ASS'Y NO.
1	MFTA-10KJ	AS166-1

APPLICATION

CODE

NOTICE TO PERSONS RECEIVING THIS DRAWING  
 THE TECHNICAL MATERIEL CORPORATION claims proprietary right in the material disclosed hereon. This drawing is issued in confidence for engineering information only and may not be reproduced or used to manufacture anything shown hereon without permission from THE TECHNICAL MATERIEL CORPORATION to the user. This drawing is loaned for mutual assistance and is subject to recall at any time.

FINAL APPROVAL	DATE	THE TECHNICAL MATERIEL CORP. MAMARONECK, NEW YORK		
MECH. DES.	DATE	BRACKET, MTG. MOTOR		
ELECT. DES.	DATE			
CHECKED	DATE			
DRAWN G.D.L.	DATE 4-20-81			
SIZE C	CODE IDENT. NO. 82679	DWG NO. MS7061	ISSUE	
SCALE		SHEET	OF	