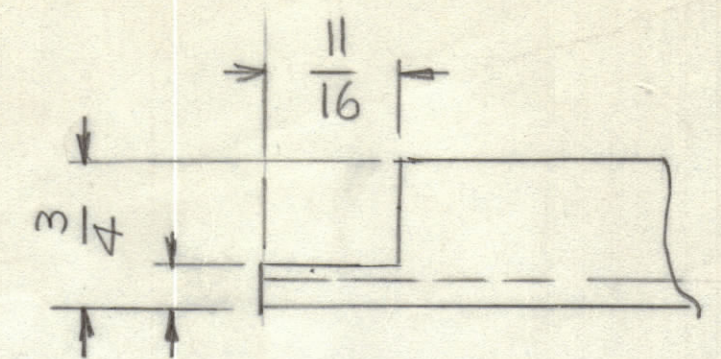


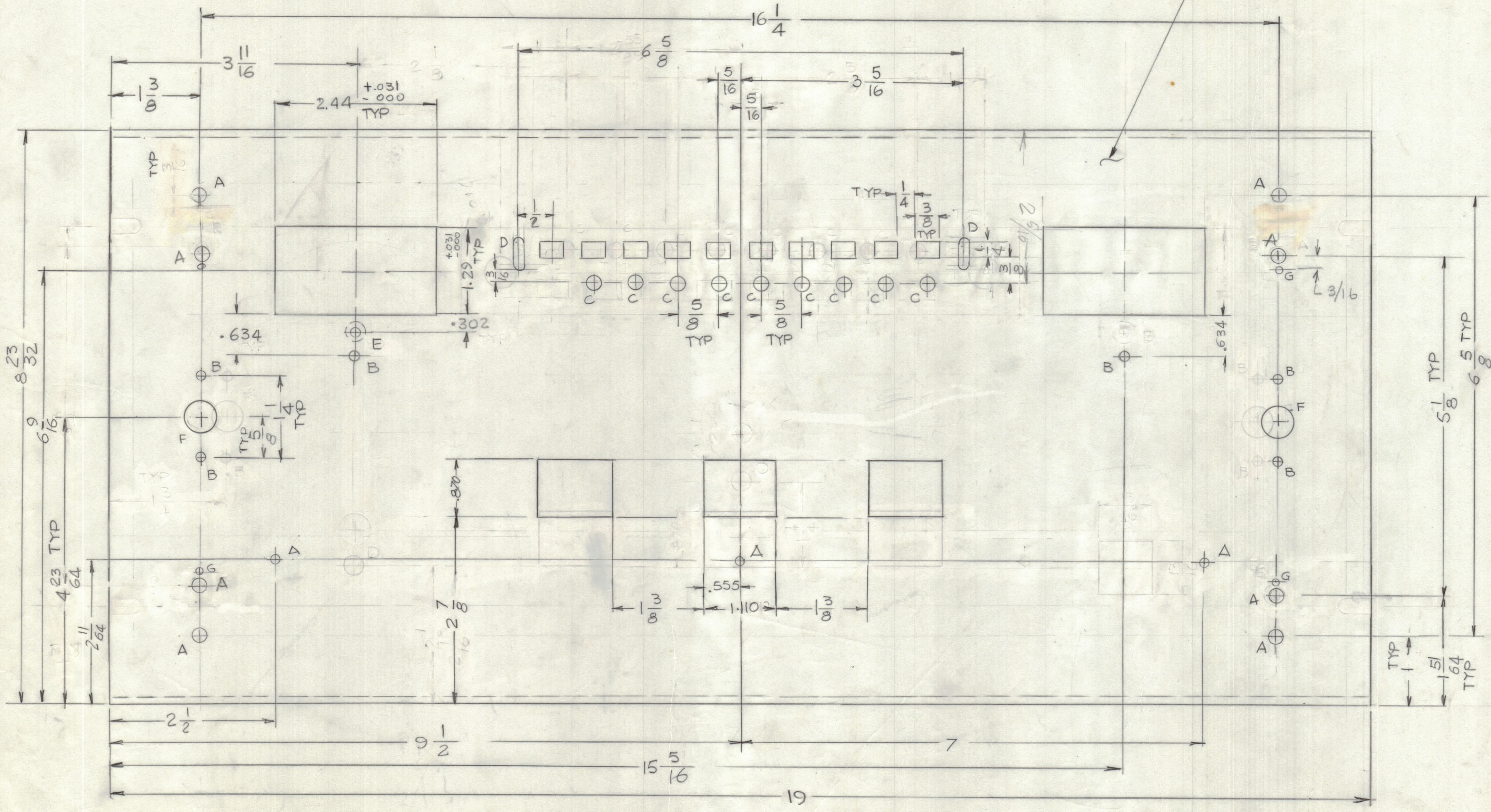
REVISIONS				
E.M.N.O	DRAFT	CHKD	ZONE	LTR

8.7188 L2
4.353



MACHINE CORNERS AFTER BENDING

MARK TMC P/NO 1/8 HIGH
GOTHIC W/LATEST REV.
LETTER



HOLES

A - 13/64 DIA	9 REQ'D
B - 11/64 DIA	6 REQ'D
C - 1/4 DIA	9 REQ'D
D - 3/16 X 1/2 SLOT	2 REQ'D
E - .169 DIA C'SHK 82 TO .337 DIA	2 REQ'D
F - 1/2 DIA	4 REQ'D
G - 3/32 DIA	4 REQ'D

8.7188 -
5.125
3.593 L2
1.770

DO NOT USE

MACHINING:

- MILL ALL EDGES.
- HOLES MUST BE DRILLED, UNLESS OTHERWISE SPECIFIED.
- LATERAL BOW OF PANEL MUST BE KEPT TO .031 TOLERANCE
- PANEL MUST BE FREE OF ALL MACHINING MARKS, GOUGES AND SCRATCHES. IF NECESSARY, SAND FRONT OF PANEL WITH NO. 120 GRIT SANDPAPER.

FINISH NOTES:

- S404 - IRIDITE 14-2 AL-COAT.
- S114 - ZINC CHROMATE PRIMER } FRONT AND EDGES ONLY
- S115 - SMOOTH GRAY ENAMEL } OR

PRIME AND PAINT PER CUSTOMER'S SPECIFICATIONS

REF: LD

QTY. REQ.	ITEM	PART NO.	DESCRIPTION	SYMBOL
LIST OF MATERIAL				
	FINAL APPROVAL	DATE	THE TECHNICAL MATERIEL CORP. MAMARONECK, NEW YORK	
	MECH. DES.	DATE		
	ELECT. DES.	DATE		
	CHECKED	DATE		
	DRAWN	DATE	PANEL, FRONT TMA-1K/C8	
			SIZE	ISSUE
			D 82679	MS7054
			SCALE 1:1	SHEET OF

QTY / UNIT	MODEL USED ON	ASS'Y NO.
	APPLICATION	
	CODE	

NOTICE TO PERSONS RECEIVING THIS DRAWING
THE TECHNICAL MATERIEL CORPORATION claims proprietary right in the material disclosed herein. This drawing is issued in confidence for engineering information only and may not be reproduced or used to manufacture anything shown hereon without permission from THE TECHNICAL MATERIEL CORPORATION to the user. This drawing is loaned for mutual assistance and is subject to recall at any time.

UNLESS OTHERWISE SPECIFIED
DIMENSIONS ARE IN INCHES
AND INCLUDE CHEMICALLY APPLIED
OR PLATED FINISHES

TOLERANCES ON

DECIMALS	FRACTIONS
.X ± .05	± 1/64
.XX ± .01	ANGLES
.XXX ± .005	= 0° - 30°

MATERIAL .1/8 THK
ALUM. 5052-H32

FINISH SEE NOTE