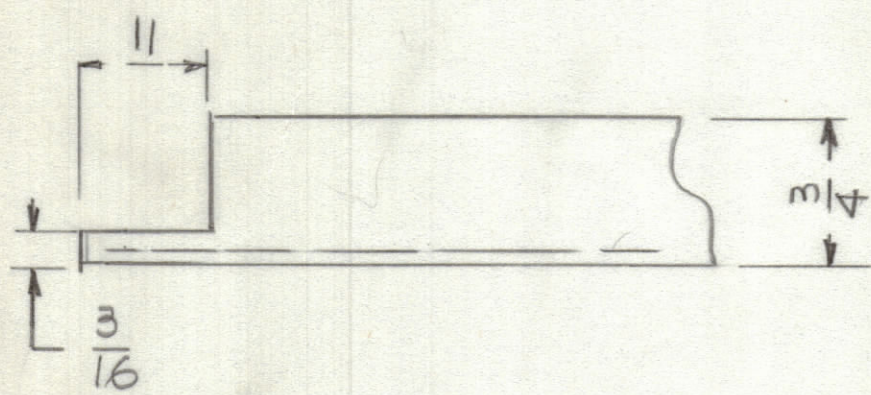
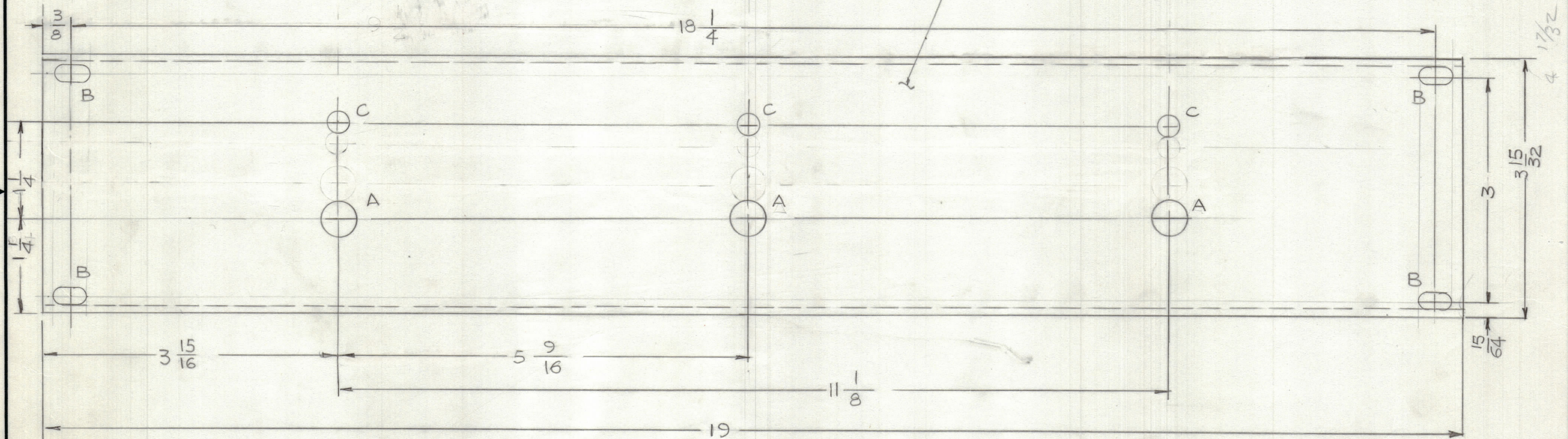


REVISIONS						
ZONE	LTR	DESCRIPTION	DATE	E.M.N.NO	DRAFT	CHKD APPD
	Ø	ORIGINAL RELEASE	3-5-81		801	

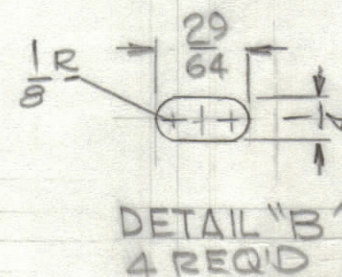
MACHINE CORNERS
AFTER BENDING



MARK TMC P/NO. 1/8 HIGH
GOTHIC W/LATEST REV.
LETTER ON REAR OF PANEL.



HOLE
A - 1/2 DIA 3 REQ'D
B - SEE DETAIL
C - 3/8 DIA 3 REQ'D



REF: LD 3130

MACHINING:

- MILL ALL EDGES.
- HOLES MUST BE DRILLED, UNLESS OTHERWISE SPECIFIED.
- LATERAL BOW OF PANEL MUST BE KEPT TO .031 TOLERANCE.
- PANEL MUST BE FREE OF ALL MACHINING MARKS, GOUGES AND SCRATCHES. IF NECESSARY, SAND FRONT OF PANEL WITH NO. 120 GRIT SANDPAPER.

FINISH NOTES:

- S404 - IRIDITE 14-2 AL-COAT.
- S114 - ZINC CHROMATE PRIMER } FRONT AND EDGES ONLY
- MIL-E-10509 TYPE 3-CL2 LIGHT GRAY-SEMI GLASS BAKING ENAMEL

CON-(3)		
QTY / UNIT	MODEL USED ON	ASS'Y NO.
APPLICATION		
CODE		

NOTICE TO PERSONS RECEIVING THIS DRAWING
THE TECHNICAL MATERIEL CORPORATION claims proprietary right in the material disclosed hereon. This drawing is issued in confidence for engineering information only and may not be reproduced or used to manufacture anything shown hereon without permission from THE TECHNICAL MATERIEL CORPORATION to the user. This drawing is loaned for mutual assistance and is subject to recall at any time.

UNLESS OTHERWISE SPECIFIED DIMENSIONS ARE IN INCHES AND INCLUDE CHEMICALLY APPLIED OR PLATED FINISHES

TOLERANCES ON
DECIMALS .X ± .05
.XX ± .01
.XXX ± .005
FRACTIONS ± 1/64
ANGLES ± 0°-30'

MATERIAL 1/8 THK ALUM-5052-H32
FINISH SEE NOTE

QTY. REQ.	ITEM	PART NO.	DESCRIPTION	SYMBOL
LIST OF MATERIAL				
THE TECHNICAL MATERIEL CORP. MAMARONECK, NEW YORK				
PANEL, FRONT SWITCHING RECORDER				
FINAL APPROVAL		DATE	SIZE CODE IDENT.NO. DWG NO.	
MECH. DES.		DATE	C 82679 MS 7036	
ELECT. DES.		DATE	SCALE 1:1 SHEET OF	
CHECKED		DATE	ISSUE	
DRAWN		DATE	Ø	
G.D.L.		10-3-80		