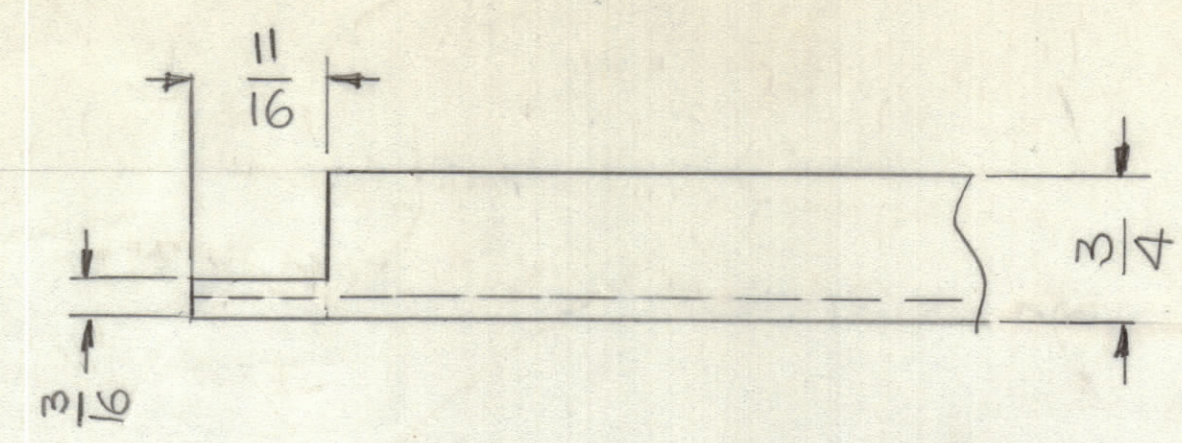
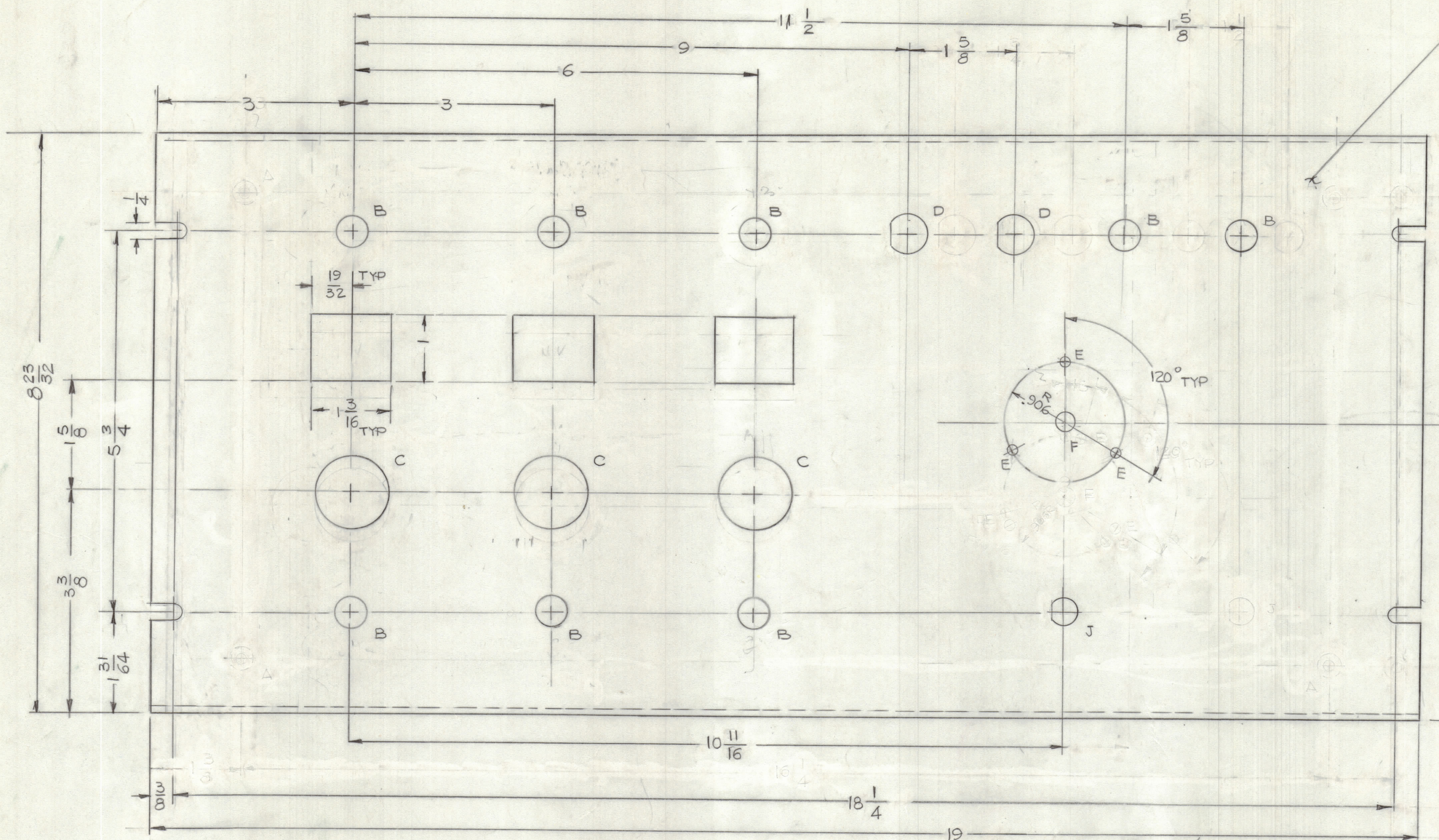


REVISIONS					
E.M.N.O	DRAFT	CHKD	ZONE	LTR	
DESCRIPTION				DATE	APPROVED
				3-5-61	

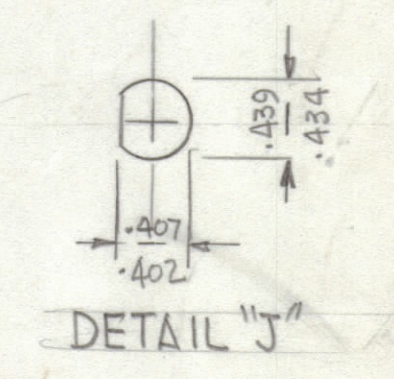
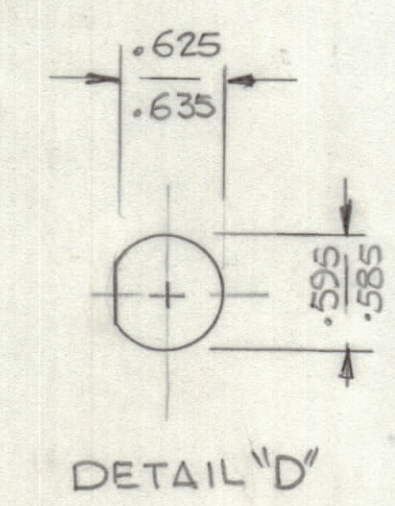
MACHINE CORNERS AFTER BENDING



MARK TMC P/NO. 1/8 HIGH GOTHIC WITH LATEST REV. LETTER, ON REAR OF PANEL



- HOLES
- A - 1/32 DIA CRANK P/NO. TO 1/32 DIA 1 REQ'D
 - B - 1/2 DIA 8 REQ'D
 - C - 1 9/64 DIA 3 REQ'D
 - D - SEE DETAIL 2 REQ'D
 - E - 11/64 DIA 3 REQ'D
 - F - 5/16 DIA 1 REQ'D
 - J - SEE DETAIL



MACHINING:

- MILL ALL EDGES.
- HOLES MUST BE DRILLED, UNLESS OTHERWISE SPECIFIED.
- LATERAL BOW OF PANEL MUST BE KEPT TO .031 TOLERANCE.
- PANEL MUST BE FREE OF ALL MACHINING MARKS, GOUGES AND SCRATCHES. IF NECESSARY, SAND FRONT OF PANEL WITH NO. 120 GRIT SANDPAPER.

FINISH NOTES:

- S404 - IRIDITE 14-2 AL-COAT.
- S114 - ZINC CHROMATE PRIMER } FRONT AND EDGES ONLY
- MIL E 105-9 TYPE 3 CL 2 LIGHT GREY SEMI GLASS BAKING ENAMEL

REF: LD 3129

1	CON - (S)	
QTY / UNIT	MODEL USED ON	ASS'Y NO.
APPLICATION		
CODE		
MATERIAL 1/8 THK ALUM 5052-H32 T		
FINISH SEE NOTE		

UNLESS OTHERWISE SPECIFIED DIMENSIONS ARE IN INCHES AND INCLUDE CHEMICALLY APPLIED OR PLATED FINISHES

TOLERANCES ON

DECIMALS	FRACTIONS
.X ± .05	± 1/64
.XX ± .01	ANGLES
.XXX ± .005	± 0° - 30'

QTY. REQ.	ITEM	PART NO.	DESCRIPTION	SYMBOL
LIST OF MATERIAL				
THE TECHNICAL MATERIEL CORP. MAMARONECK, NEW YORK				
PANEL, FRONT				
SIZE	CODE	IDENT NO.	DWG NO.	ISSUE
D	82679		MS 7032	
SCALE 1:1				SHEET OF

NOTICE TO PERSONS RECEIVING THIS DRAWING
 THE TECHNICAL MATERIEL CORPORATION claims proprietary right in the material disclosed hereon. This drawing is issued in confidence for engineering information only and may not be reproduced or used to manufacture anything shown hereon without permission from THE TECHNICAL MATERIEL CORPORATION to the user. This drawing is loaned for mutual assistance and is subject to recall at any time.