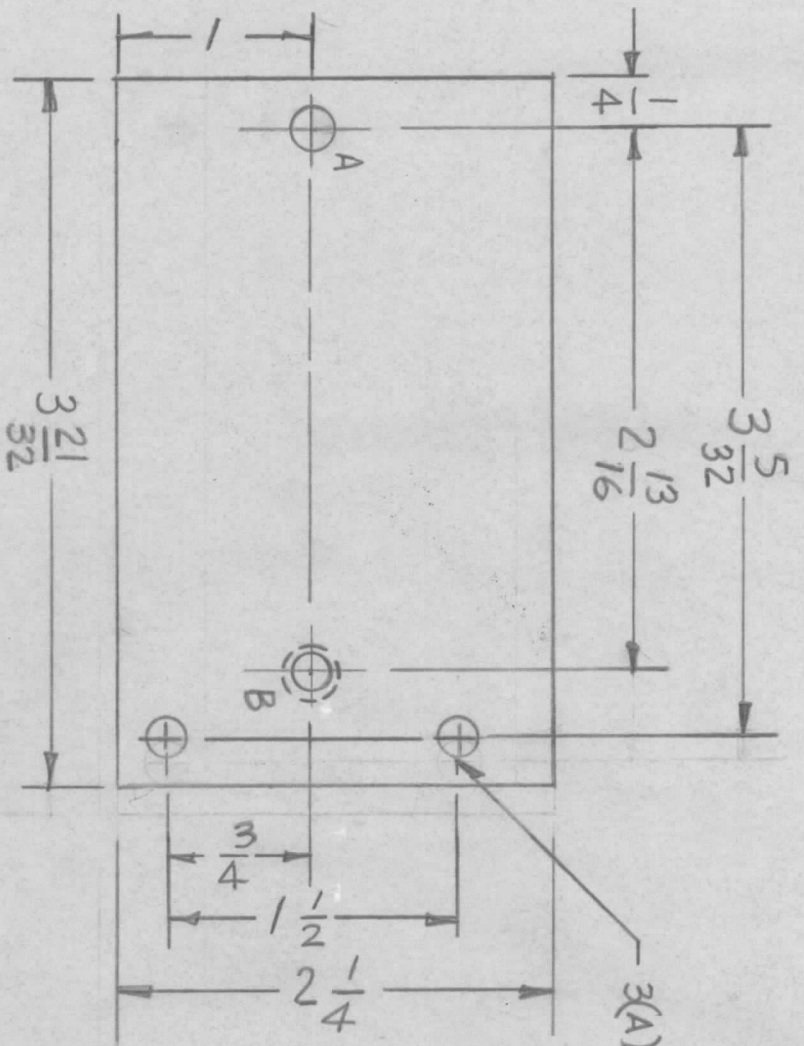


REVISIONS							
EM.N NO.	DRAFT	CHKD	ZONE	LTR	DESCRIPTION	DATE	APPROVED
—	dw			Ø	ORIGINAL RELEASE	9-11-80	



B Hole
 DRILL 5/32
 C'SINK 82° TO 1/4 (APPROX)

UNLESS OTHERWISE SPECIFIED:
 1. USE MATERIAL THICKNESS FOR MAXIMUM RADIUS ON ALL BENDS.
 2. ALL ANGULAR BENDS 90 DEGREES.
 3. REMOVE ALL BURRS AND SHARP EDGES.
 4. MOUNT INSERTS AFTER FINISHING.

REQ'D	ITEM	PART NUMBER	DESCRIPTION	SYM.
			LIST OF MATERIAL	
<p>THE TECHNICAL MATERIEL CORP. MAMARONECK, NEW YORK</p> <p>PLATE, MOUNTING for TIMER</p>				
FINAL APPROVAL		DATE	SIZE	
MECH. DES.		9-11-80	B	
ELECT. DES.			CODE IDENT. NO.	DWG NO.
CHECKED			82679	MST031
DRAWN		8-21-80	SCALE	SHEET
				OF
QTY / UNIT		MODEL USED ON	ASS'Y NO.	
1		APPLICATION	A5783	
		CODE		
<p>UNLESS OTHERWISE SPECIFIED DIMENSIONS ARE IN INCHES AND INCLUDE CHEMICALLY APPLIED OR PLATED FINISHES</p> <p>DECIMALS .X ± .05 TOLS. 1/64 ANGLES 0°-30'</p> <p>.XX ± .01</p> <p>.XXX ± .005</p> <p>MATERIAL .063 THK ALUM AL 5052-H32</p> <p>FINISH S404 YEL IRIDITE</p>				
<p>NOTICE TO PERSONS RECEIVING THIS DRAWING</p> <p>THE TECHNICAL MATERIEL CORPORATION claims proprietary right in the material disclosed hereon. This drawing is issued in confidence for engineering information only and may not be reproduced or used to manufacture anything shown hereon without permission from THE TECHNICAL MATERIEL CORPORATION to the user. This drawing is loaned for mutual assistance and is subject to recall at any time.</p>				