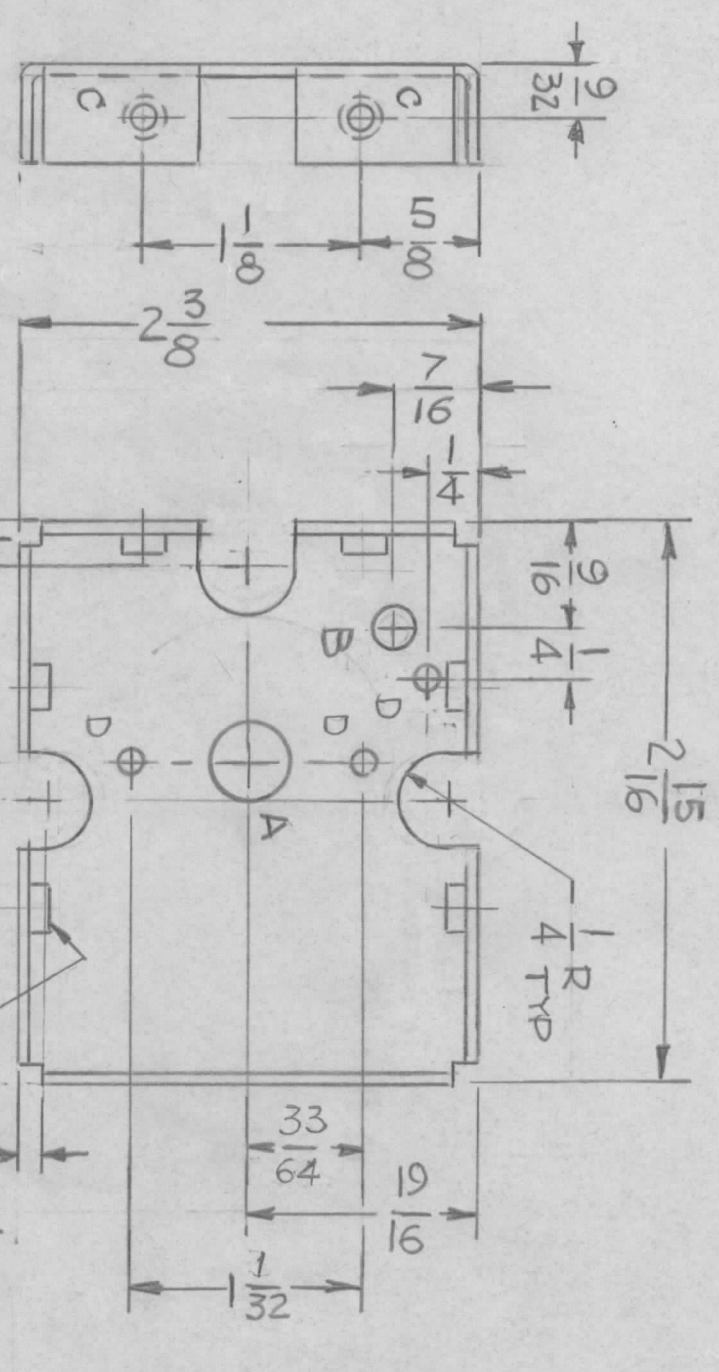


REVISIONS							
EMN. NO.	DRAFT	CHKD	ZONE	LTR	DESCRIPTION	DATE	APPROVED
				X1	THREE NOTCHES 1/4" D.D.D.	6-30-80	
	du			A	ORIGINAL RELEASE	7-7-80	
	G.D.L.			B	DIMS. LOCATIONS 'D' HOLES WAS 19/32 & 13/16	3-8-89	
	G.D.L.			C	QTY. 'C' HOLE WAS 6	8-18-89	
					ON RIGHT SIDE WAS INDICATED 'D' HOLE	8-28-90	



- HOLE - REQ'D
- A - 7/16 DIA 1
  - B - 1/4 DIA 1
  - C - .161-.164 DIA 8
  - D - 9/64 DIA 3

QTY / UNIT	1	AMC-21C	MODEL USED ON	ASSY NO.
		APPLICATION		
		CODE		

NOTICE TO PERSONS RECEIVING THIS DRAWING  
 THE TECHNICAL MATERIEL CORPORATION claims proprietary right in the material disclosed hereon. This drawing is issued in confidence for engineering information only and may not be reproduced or used to manufacture anything shown hereon without permission from THE TECHNICAL MATERIEL CORPORATION to the user. This drawing is loaned for mutual assistance and is subject to recall at any time.

REF: LD3126  
 LD 3127

MS 7026 -1 MIRROR IMAGE REQ'D 1  
 MS 7026 -2 AS SHOWN (FRONT) REQ'D 1

MARK TMC P/NO. 1/8 HIGH GOTHIC  
 W/LATEST REV. LETTER

REQ'D	ITEM	PART NUMBER	DESCRIPTION	SYM.
8	1	NT129-0440-A	NUT, SWAGE	C

LIST OF MATERIAL

THE TECHNICAL MATERIEL CORP.  
 MAMARONECK, NEW YORK

BRACKET, SWITCH

SIZE	B	CODE IDENT. NO.	82679	DWG NO.	MS 7026	ISSUE	C
SCALE	1:1			SHEET	OF		