

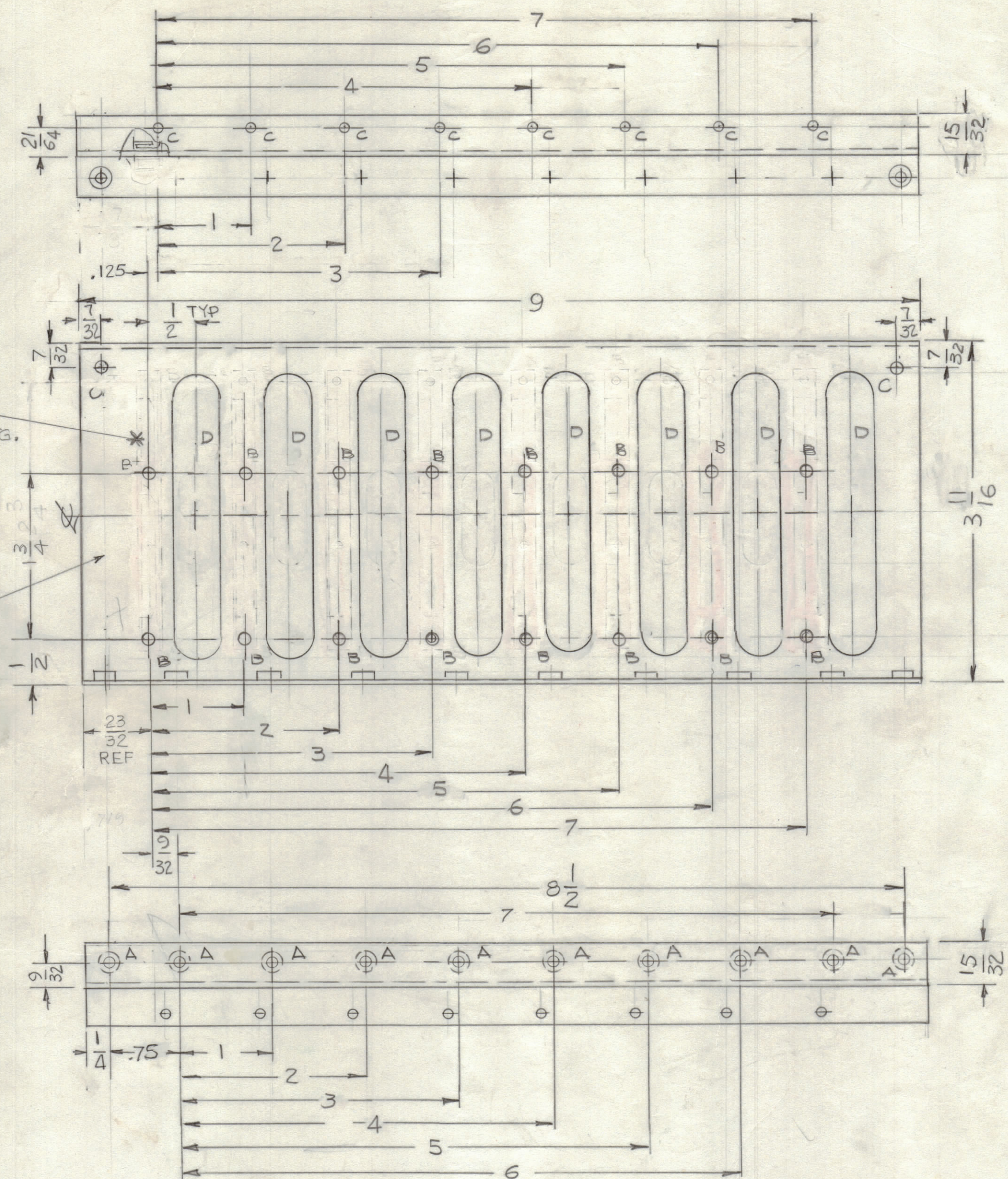
4

3

2

1

REVISIONS						
ZONE	LTR	DESCRIPTION	DATE	E.M.N.NO	DRAFT	CHKD APPD
X	1	8 D HOLES ADD DIM 15/32 WAS 25/64	6-4-80		GDL	
		ORIGINAL RELEASE	6-10-80			dw
A		ONE "D" SLOT ADD - DIMS "D" HOLE WAS 3/8 X 1 -	7-26-82	21922	GDL	
B		ITEM 3 WAS CU157-5	7-7-93		GDL	QB
C		REMOVED CU157-2 CHANGED B HOLE TO .113 DIA	10/22/96			QB



DETAIL FOR MTG RETAINER

SEE
DETAIL MTG,
RETAINER

MARK TMC P/NO
1/8 HIGH GOTHIC
W/LATEST REV.
LETTER

MS7019 - 1 TOP AS SHOWN
MS7019 - 2 MIRROR IMAGE

HOLES:

- A - .191-.194 DIA 10 REQ'D
- B - .113 DIA 16 REQ'D
- C - 9/64 DIA 10 REQ'D
- D - 1/2 x 3 SLOT 8 REQ'D

QTY. REQ.	ITEM	PART NO.	DESCRIPTION	SYMBOL
8	3	CU157-2	RETAINER, PC BOARD	
16	2	EY-100-5	EYELET, FLAT FLANGE	
10	1	NT129-0632-4	NUT, ROUND	

LIST OF MATERIAL
THE TECHNICAL MATERIEL CORP.
MAMARONECK, NEW YORK

BRACKET, MTG CONNECTOR

- UNLESS OTHERWISE SPECIFIED:
- USE MATERIAL THICKNESS FOR MAXIMUM RADIUS ON ALL BENDS.
 - ALL ANGULAR BENDS 90 DEGREES.
 - REMOVE ALL BURRS AND SHARP EDGES.
 - MOUNT INSERTS AFTER FINISHING.

QTY / UNIT	MODEL USED ON	ASS'Y NO.
1	AMC-21C	AXS252
1	AMC-21C	AXS252

UNLESS OTHERWISE SPECIFIED DIMENSIONS ARE IN INCHES AND INCLUDE CHEMICALLY APPLIED OR PLATED FINISHES

TOLERANCES ON

DECIMALS	FRACTIONS
.X ± .05	± 1/64
.XX ± .01	ANGLES
.XXX ± .005	± 0° .30'

MATERIAL .063 THK ALUM. 5052-H32

FINISH S404 VEL IRIDITE

SIZE	CODE IDENT. NO.	DWG NO.	ISSUE
C	82679	MS7019	C

SCALE 1:1 SHEET OF

NOTICE TO PERSONS RECEIVING THIS DRAWING

THE TECHNICAL MATERIEL CORPORATION claims proprietary right in the material disclosed herein. This drawing is issued in confidence for engineering information only and may not be reproduced or used to manufacture anything shown herein without permission from THE TECHNICAL MATERIEL CORPORATION to the user. This drawing is loaned for mutual assistance and is subject to recall at any time.

4

3

2

1