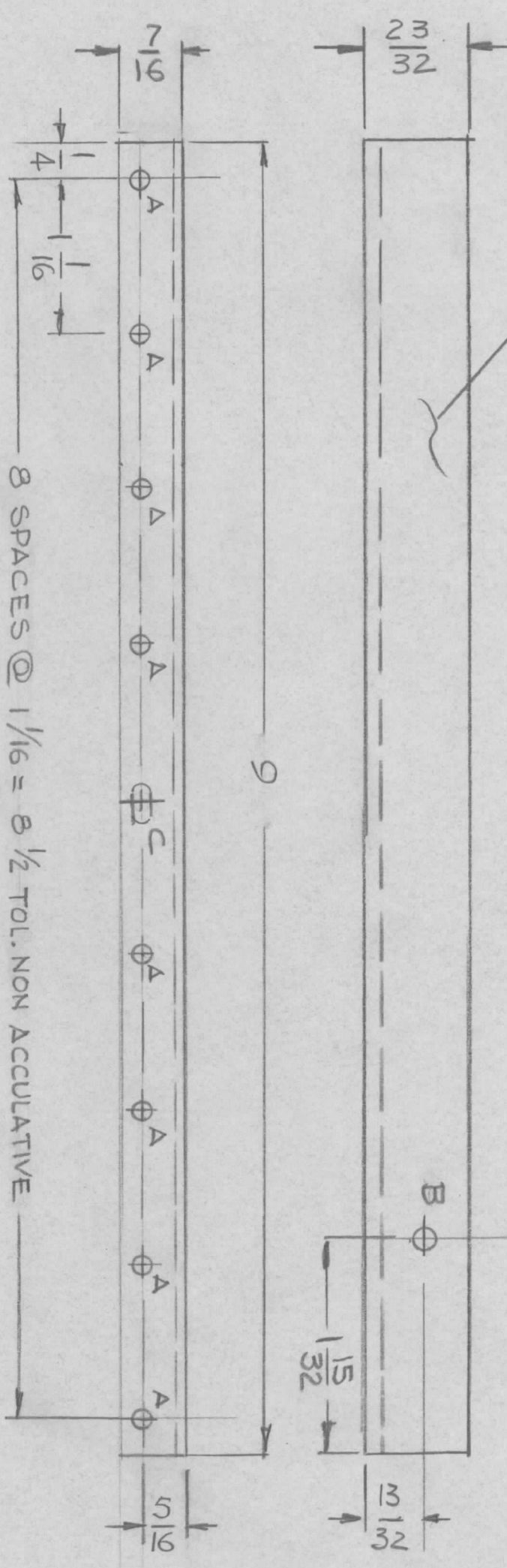


REVISIONS				DATE	APPROVED
EMN. NO.	DRAFT	CHKD	ZONE	LTR	DESCRIPTION

MARK TMC P/NO. 1/8 HIGH GOTHIC
W/LATEST REV. LETTER



- HOLES
- A - 9/64 DIA 9 REQ'D
 - B - 3/16 DIA 14 REQ'D
 - C - 11/64 x 11/32 SLOT 1 REQ'D

UNLESS OTHERWISE SPECIFIED:

1. USE MATERIAL THICKNESS FOR MAXIMUM RADIUS ON ALL BENDS.
2. ALL ANGULAR BENDS 90 DEGREES.
3. REMOVE ALL BURRS AND SHARP EDGES.
4. MOUNT INSERTS AFTER FINISHING.

QTY / UNIT	1	MODEL USED ON	MFO	ASSY NO.	
		APPLICATION			
		CODE			

NOTICE TO PERSONS RECEIVING THIS DRAWING
THE TECHNICAL MATERIEL CORPORATION claims proprietary right in the material disclosed hereon. This drawing is issued in confidence for engineering information only and may not be reproduced or used to manufacture anything shown hereon without permission from THE TECHNICAL MATERIEL CORPORATION to the user. This drawing is loaned for mutual assistance and is subject to recall at any time.

REQ'D	ITEM	PART NUMBER	DESCRIPTION	SYM.
			LIST OF MATERIAL	

UNLESS OTHERWISE SPECIFIED DIMENSIONS ARE IN INCHES AND INCLUDE CHEMICALLY APPLIED OR PLATED FINISHES		FINAL APPROVAL		DATE	
DECIMALS	FRACTIONS	MECH. DES.			
.X ± .05 TOLS.	1/64 ANGLES	ELECT. DES.			
.XX ± .01	0° .30'	CHECKED			
.XXX ± .005		DRAWN	GDL	DATE	3/3/60

MATERIAL	063THK	FINISH	S404
	ALUM 5052-H32		YEL. IRIDITE
SCALE	B	CODE IDENT. NO.	82679
		DWG NO.	MS 7014
		SHEET	1

THE TECHNICAL MATERIEL CORP.
MAMARONECK, NEW YORK
ANGLE, STIFFENER