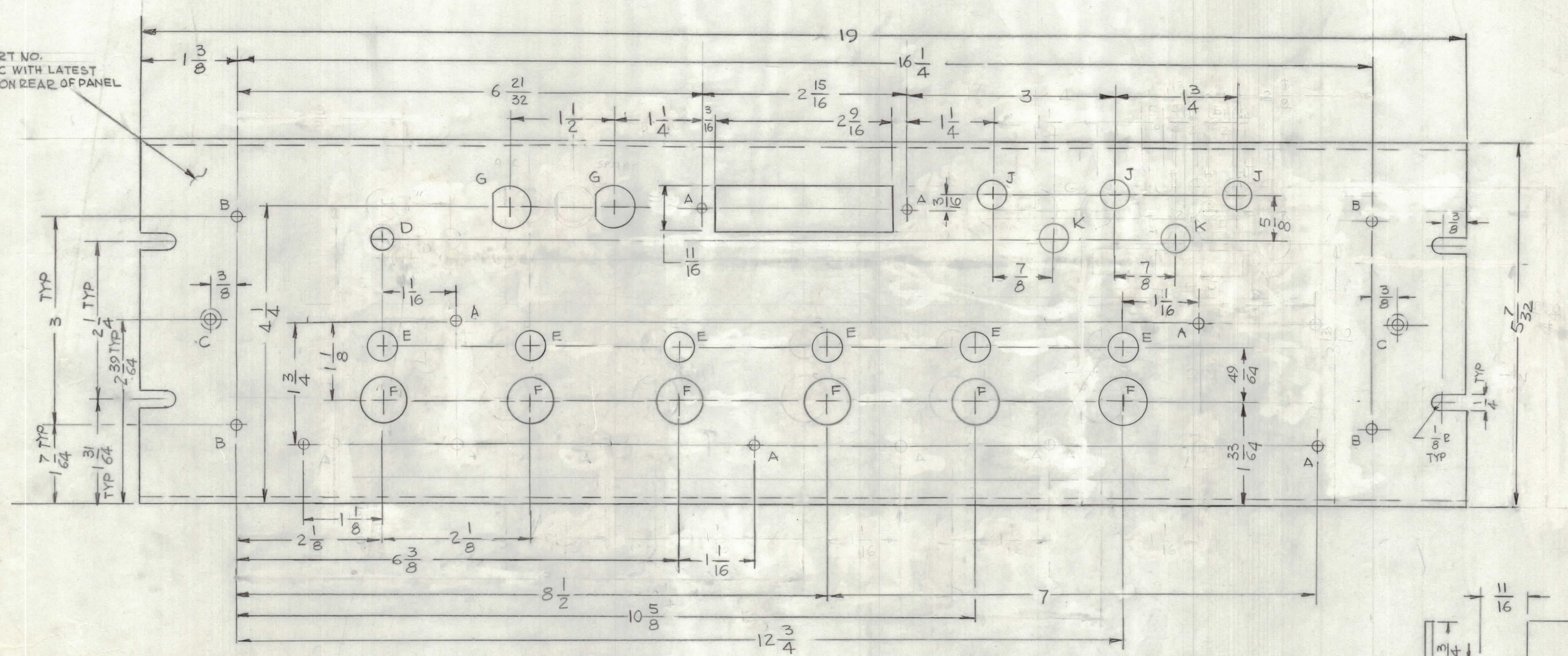


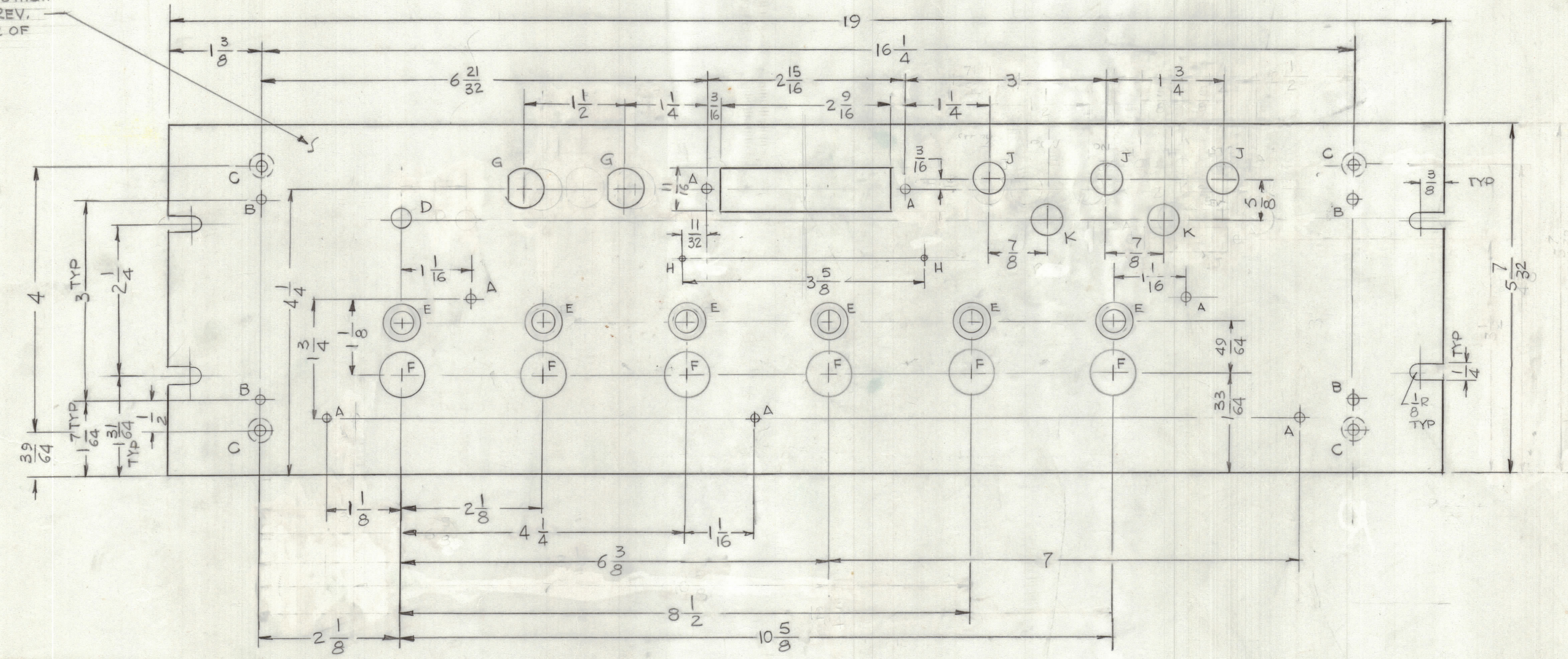
REVISIONS							
E.M.N.O	DRAFT	CHKD	ZONE	LTR	DESCRIPTION	DATE	APPROVED
					X1 1/2" HOLE WAS 1/2" DIA	4-9-80	

MARK TMC PART NO.
1/8" HIGH GOTHIC WITH LATEST
REV. LETTER ON REAR OF PANEL



REVISIONS				
E.M.N.O.	DRAFT	CHKD	ZONE	LTR
DESCRIPTION			DATE	APPROVED

MARK TMC P/NO. 1/8 HIGH
GOTHIC W/LATEST REV.
LETTER OR REAR OF
PANEL.



MACHINING:

- MILL ALL EDGES.
- HOLES MUST BE DRILLED, UNLESS OTHERWISE SPECIFIED.
- LATERAL BOW OF PANEL MUST BE KEPT TO .031 TOLERANCE.
- PANEL MUST BE FREE OF ALL MACHINING MARKS, GOUGES AND SCRATCHES. IF NECESSARY, SAND FRONT OF PANEL WITH NO. 120 GRIT SANDPAPER.

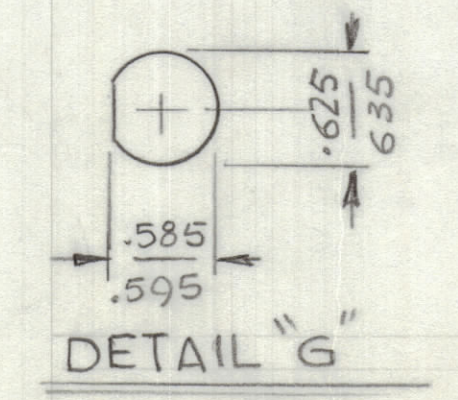
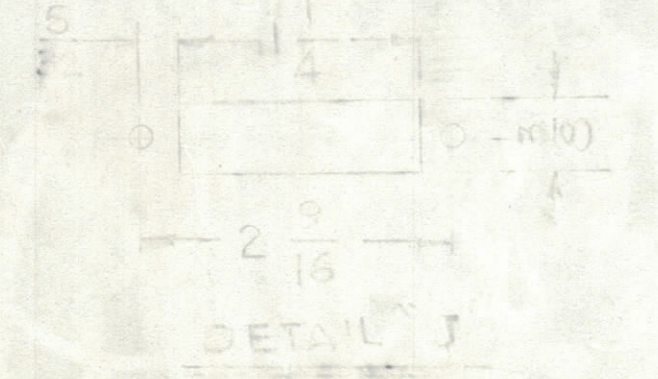
FINISH NOTES:

- S404 - IRIDITE 14-2 AL-COAT.
- S114 - ZINC CHROMATE PRIMER

FRONT AND EDGES ONLY
MIL-E-10509 TYPE 3 CLASS 2- SEMI GLASS BAKING ENAMEL

HOLE :

A - 11/64 DIA 5 REQ'D
 B - 13/64 DIA 4 REQ'D
 C - .196 DIA C/SNK 82° TO .390 DIA 4 REQ'D
 D - 13/32 DIA 1 REQ'D
 E - 11/32 DIA C/SNK 82° TO 19/32 DIA 6 REQ'D
 F - 11/16 DIA 6 REQ'D
 G - SEE DETAIL 2 REQ'D
 H - DRILL # 49 (Ø73) 2 REQ'D
 J - 15/32 DIA 3 REQ'D
 K - 1/2 DIA 2 REQ'D



MFO		
QTY / UNIT	MODEL USED ON	ASS'Y NO.
APPLICATION		
CODE		

REF: LD2123

UNLESS OTHERWISE SPECIFIED DIMENSIONS ARE IN INCHES AND INCLUDE CHEMICALLY APPLIED OR PLATED FINISHES

TOLERANCES ON

DECIMALS	FRACTIONS
.X ± .05	± 1/64
.XX ± .01	ANGLES ± 0° - 30'
.XXX ± .005	

MATERIAL 3/16THK ALUM ALLOY 2024 T3
FINISH SEE NOTE

QTY. REQ.	ITEM	PART NO.	DESCRIPTION	SYMBOL
LIST OF MATERIAL				
THE TECHNICAL MATERIEL CORP. MAMARONECK, NEW YORK				
PANEL, FRONT				
FINAL APPROVAL		DATE		
MECH. DES.		DATE		
ELECT. DES.		DATE		
CHECKED		DATE		
DRAWN		DATE		
G.D.L.		5-11-80		
SIZE	CODE	IDENT NO.	DWG NO.	ISSUE
D	82679	MS7005-2		1
SCALE 1:1		SHEET 2 OF 2		

NOTICE TO PERSONS RECEIVING THIS DRAWING

THE TECHNICAL MATERIEL CORPORATION claims proprietary right in the material disclosed hereon. This drawing is issued in confidence for engineering information only and may not be reproduced or used to manufacture anything shown hereon without permission from THE TECHNICAL MATERIEL CORPORATION to the user. This drawing is loaned for mutual assistance and is subject to recall at any time.