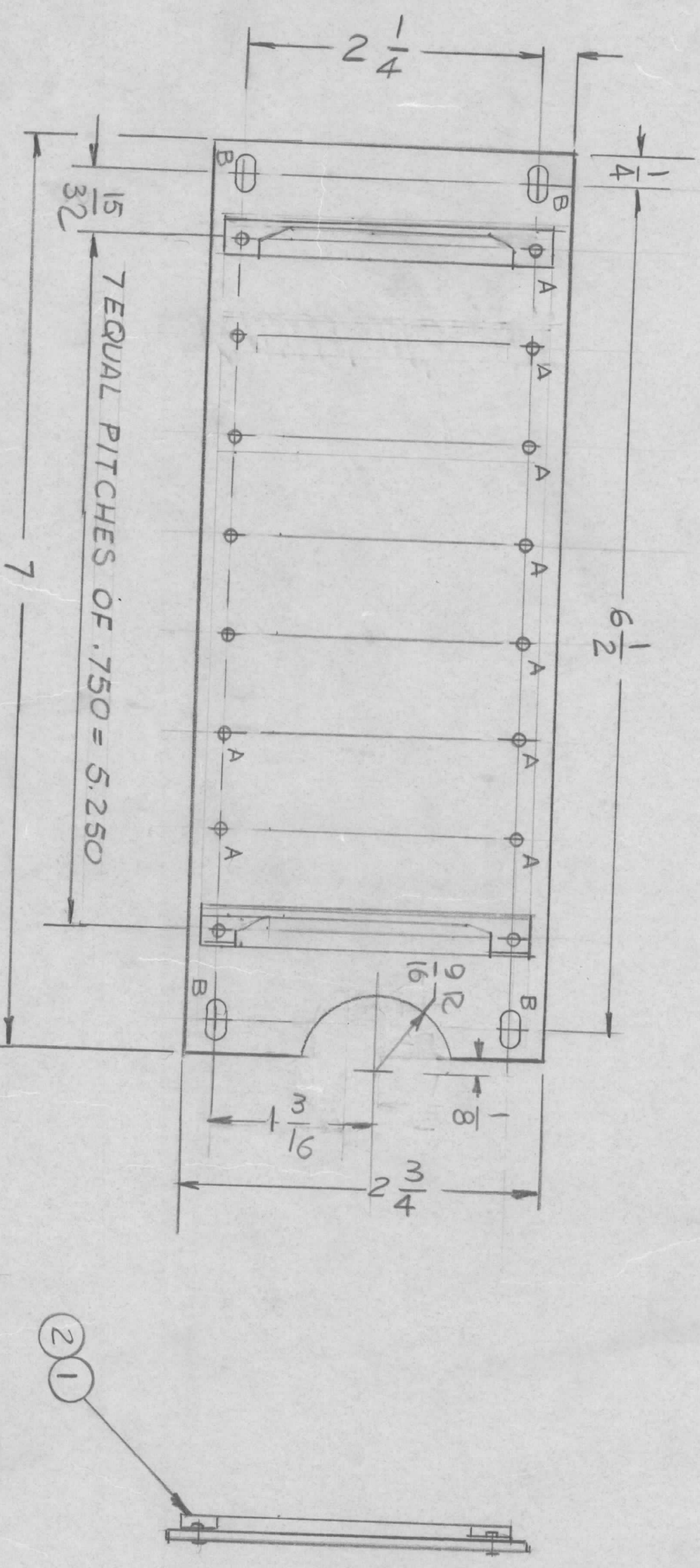


EM/N. NO.	DRAFT	CHKD	ZONE	LTR	DESCRIPTION	DATE	APPROVED
	G.D.L.				X1 9/16 R CUTOUT WAS 1/4 R	5-12-80	

5 4 3 2 1



HOLE:
 A - .067 DIA 16REQ'D
 B - 9/64 X 9/32 SLOT 4REQ'D

QTY / UNIT	1	MODEL USED ON	SME-5	ASS'Y NO.	
APPLICATION					
NOTICE TO PERSONS RECEIVING THIS DRAWING THE TECHNICAL MATERIEL CORPORATION claims proprietary right in the material disclosed hereon. This drawing is issued in confidence for engineering information only and may not be reproduced or used to manufacture anything shown hereon without permission from THE TECHNICAL MATERIEL CORPORATION to the user. This drawing is loaned for mutual assistance and is subject to recall at any time.					

UNLESS OTHERWISE SPECIFIED DIMENSIONS ARE IN INCHES AND INCLUDE CHEMICALLY APPLIED OR PLATED FINISHES	DECIMALS	TOLS.	FRACTIONS	ANGLES
	X ± .05	1/64		0° - 30'
	.XX ± .01			
	.XXX ± .005			
MATERIAL	.063THK ALUM 5052-H32			
FINISH	S404 YEL. IRIDITE			

REQ'D	ITEM	PART NUMBER	DESCRIPTION	SYM.
16	2	EY100-	EYELET FLAT FLANGE	
8	1	CU157-3	RETAINER, PC BD	

FINAL APPROVAL	DATE	
MECH. DES.	DATE	
ELECT. DES.	DATE	
CHECKED	DATE	
DRAWN	DATE	2-13-80

LIST OF MATERIAL	THE TECHNICAL MATERIEL CORP.		
	MAMARONECK, NEW YORK		
GUIDE, CARD FILE			
SIZE	CODE IDENT. NO.	DWG NO.	ISSUE
B	82679	MS6992	X1