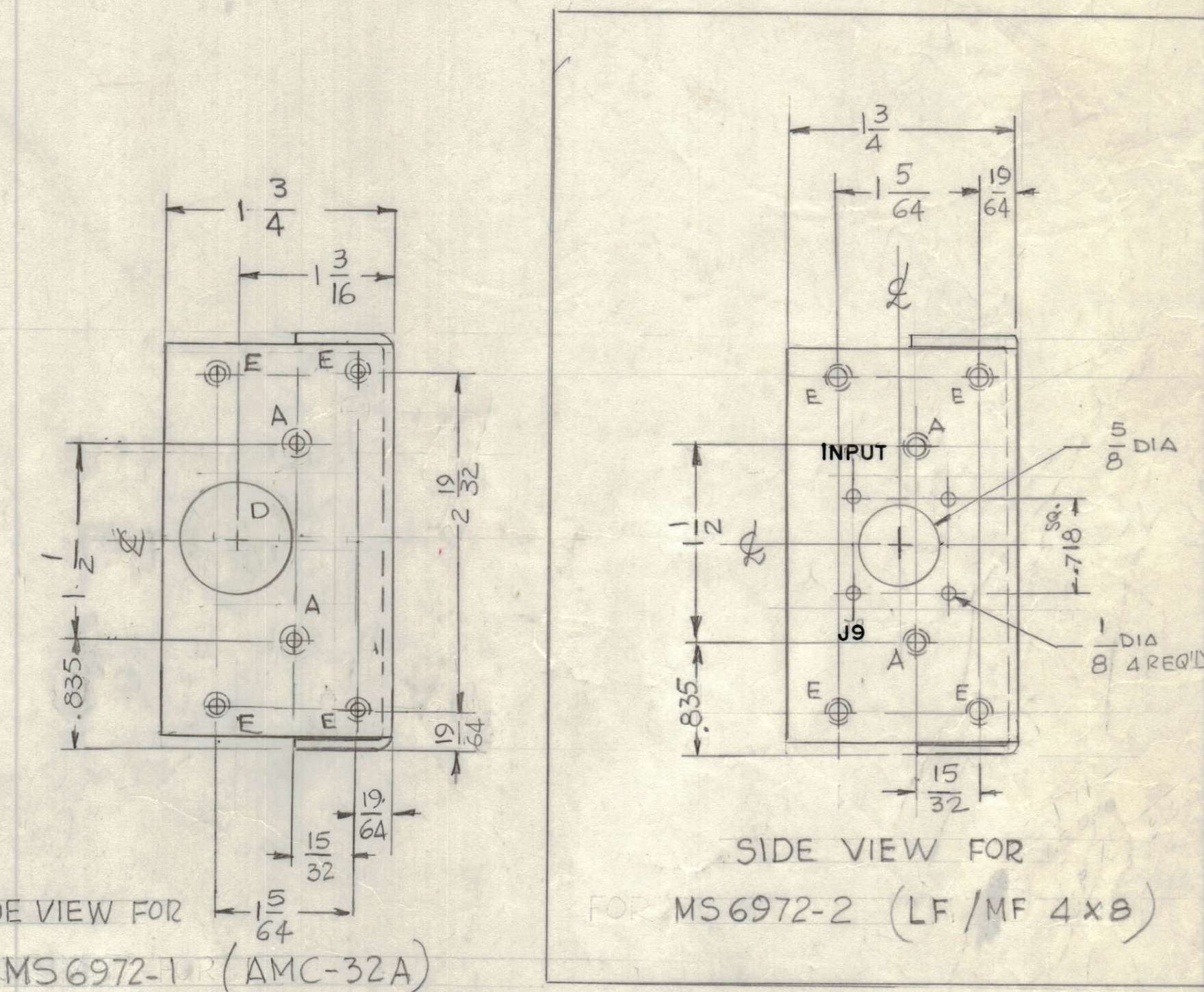
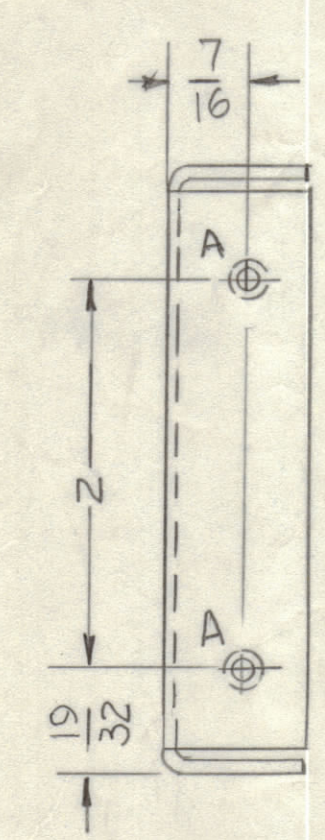
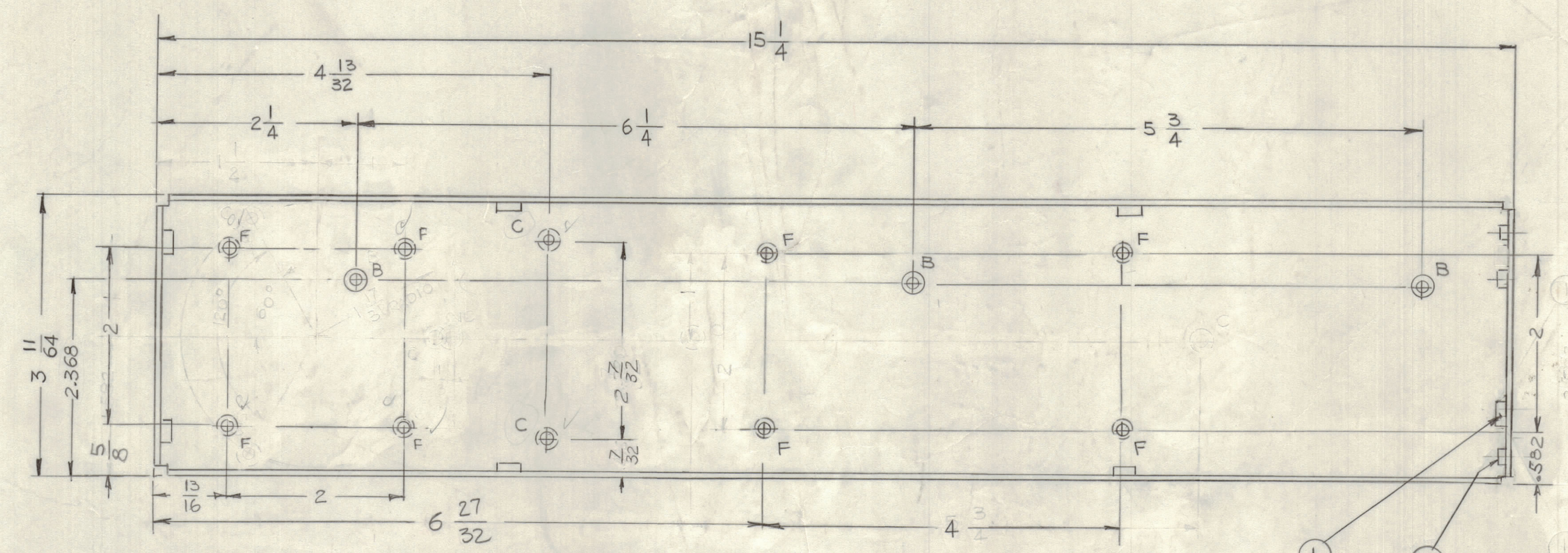
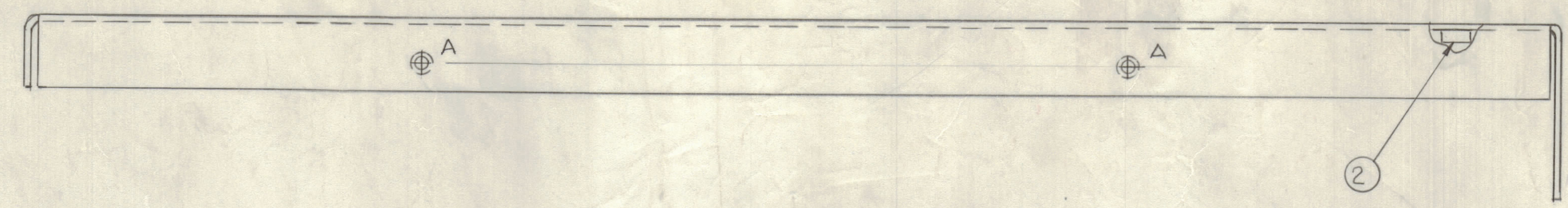
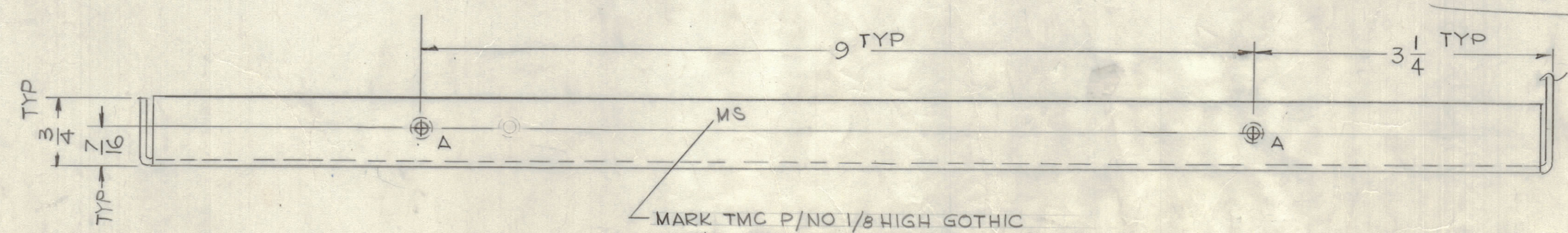


REVISIONS							
E.M.N.NO	DRAFT	CHKD	ZONE	LTR	DESCRIPTION	DATE	APPROVED
GDL				X1	REDRAWN & UPDATED	2-21-80	
				Φ	ORIGINAL RELEASE FOR PRODUCTION	2-26-80	
21790	GDL	GIL		A	DIM .475 WAS .472 4" HOLE ADD. TWO "C" HOLES DELETED	4-16-80	
GDL				B	DETAIL SIDE VIEW FOR LF/MF ADD.	8-2-88	
GDL				C	ONE "C" HOLE ON LEFT SIDE RELOCATED	3-26-91	
GDL				G	3" HOLES DELETED, 4" HOLES ON LEFT SIDE ADD.	4-10-91	
GDL				H	DIM'S 2 7/32 WAS 2.220 & 1 5/32 WAS .475 NOTE: REPLACE BY ADD	3-25-93	



REPLACE BY
MS 7263
3-25-93

- HOLE:
- A - .191 - .194 DIA. 8 REQ'D
 - B - .250 - .254 DIA. 3 REQ'D
 - C - .144 DIA C'SK 82° TO .284 DIA 2 REQ'D
 - D - 7/8 DIA 1 REQ'D
 - E - .161 - .164 DIA 4 REQ'D
 - F - .120 DIA C'SHK 82° TO .230 DIA 8 REQ'D



- UNLESS OTHERWISE SPECIFIED:
- USE MATERIAL THICKNESS FOR MAXIMUM RADIUS ON ALL BENDS.
 - ALL ANGULAR BENDS 90 DEGREES.
 - REMOVE ALL BURRS AND SHARP EDGES.
 - MOUNT INSERTS AFTER FINISHING.

MARK TMC P/NO 1/8 HIGH GOTHIC WITH LATEST REV. LETTER

QTY. REQ.	ITEM	PART NO.	DESCRIPTION	SYMBOL
4	3	NT 129-0440-4	NUT, ROUND	E
3	2	NT 129-1032-4	NUT, ROUND	B
8	1	NT 129-0632-4	NUT, ROUND	A

LIST OF MATERIAL
THE TECHNICAL MATERIEL CORP.
MAMARONECK, NEW YORK

1	LF / MF 4x8	
1	AMC-32A	
QTY. / UNIT	MODEL USED ON	ASS'Y NO.
	APPLICATION	
	CODE	

UNLESS OTHERWISE SPECIFIED DIMENSIONS ARE IN INCHES AND INCLUDE CHEMICALLY APPLIED OR PLATED FINISHES	FINAL APPROVAL	DATE
TOLERANCES ON	MECH. DES.	DATE
DECIMALS	ELECT. DES.	DATE
.X ± .05	CHECKED	DATE
.XX ± .01	DRAWN	DATE
.XXX ± .005	G.D.L.	12-17-79

PLATE, LEFT SIDE

NOTICE TO PERSONS RECEIVING THIS DRAWING
THE TECHNICAL MATERIEL CORPORATION claims proprietary right in the material disclosed hereon. This drawing is issued in confidence for engineering information only and may not be reproduced or used to manufacture anything shown hereon without permission from THE TECHNICAL MATERIEL CORPORATION to the user. This drawing is loaned for mutual assistance and is subject to recall at any time.

MATERIAL .063 THK
ALUM. 5052-H32
FINISH S404
YEL. IRIDITE

SIZE	CODE	IDENT NO.	DWG NO.	ISSUE
D		82679	MS 6972-	H