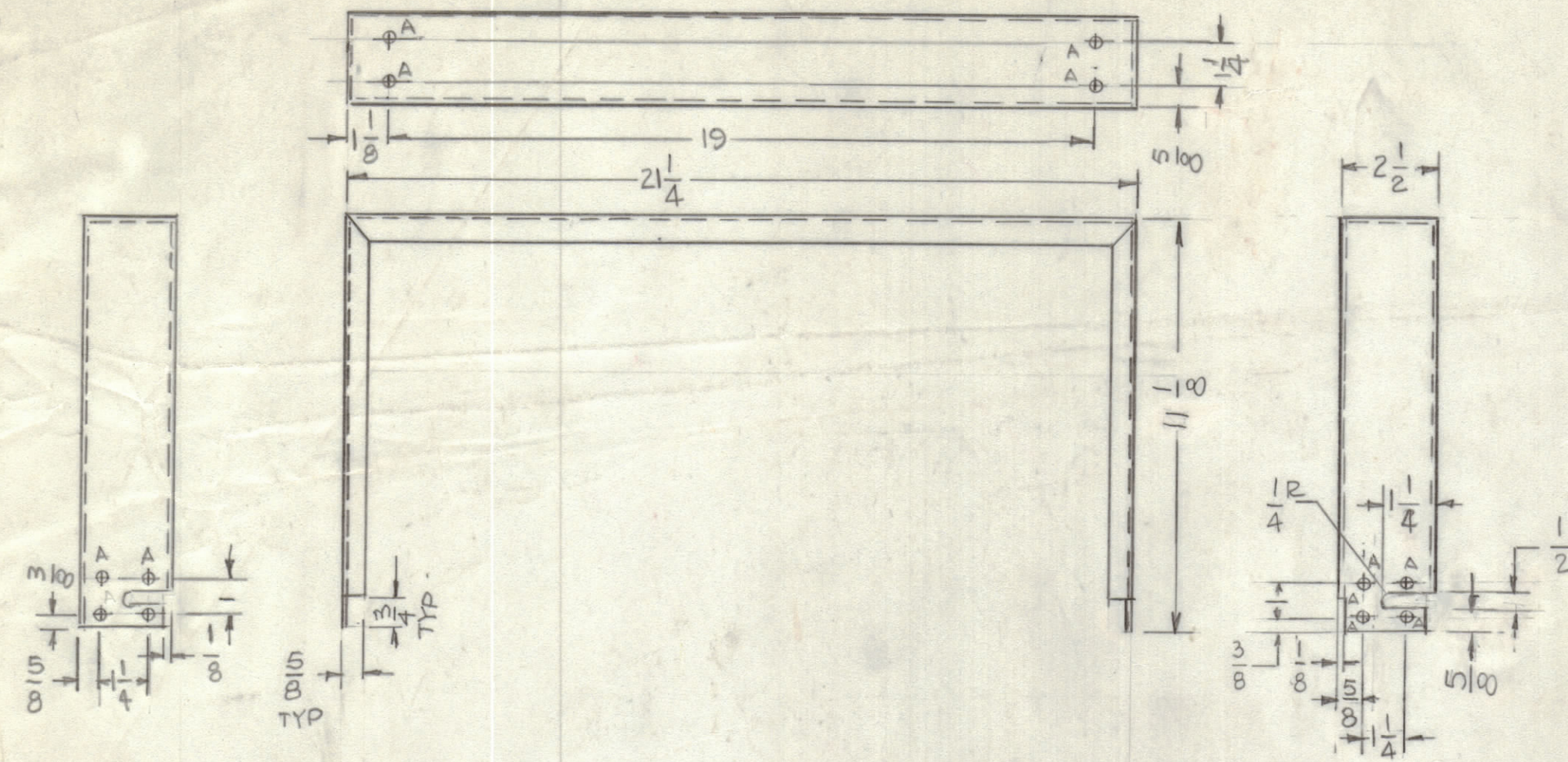
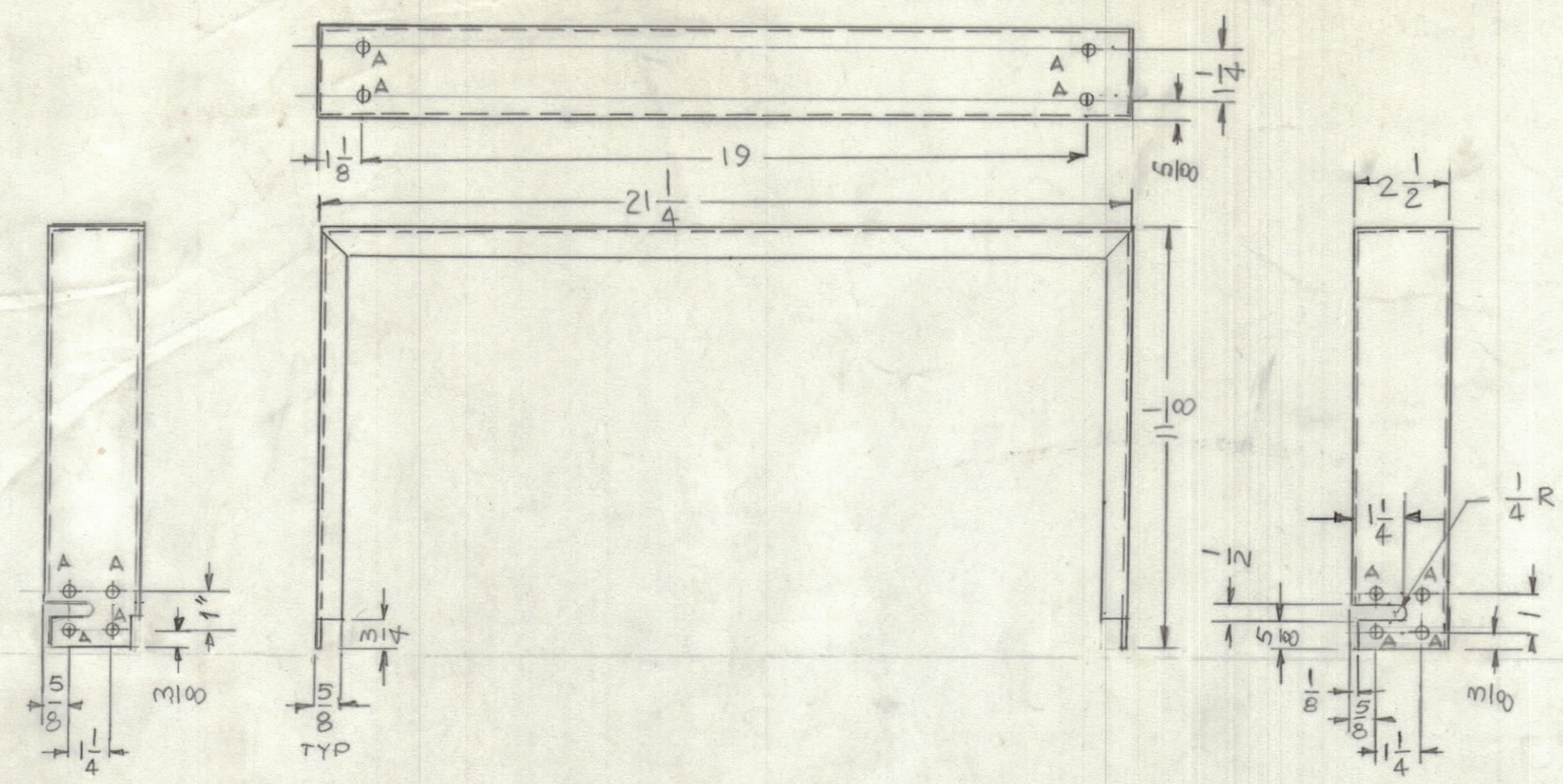


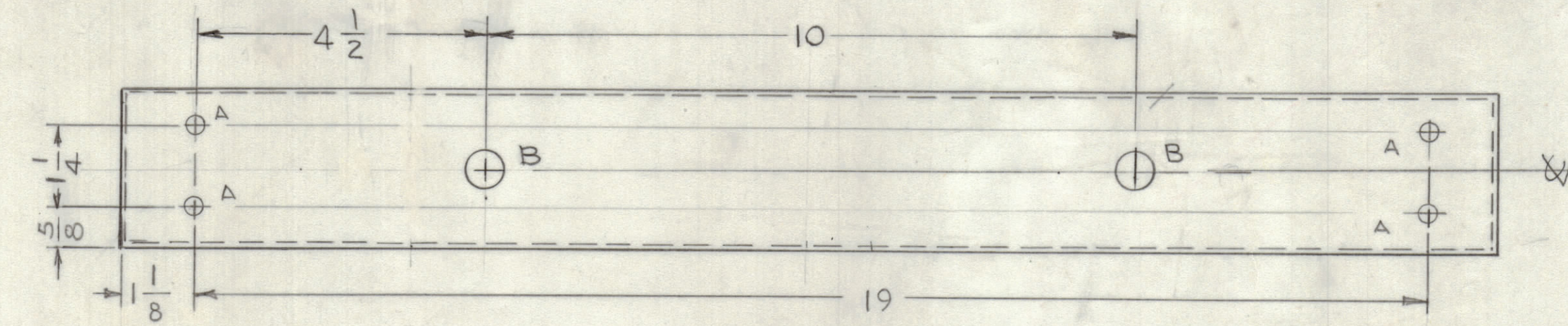
REVISIONS				
E.M.N.O	DRAFT	CHKD	ZONE	LTR
77	MAC			
DESCRIPTION			DATE	APPROVED
ORIGINAL RELEASE FOR PRODUCTION			11-29-79	



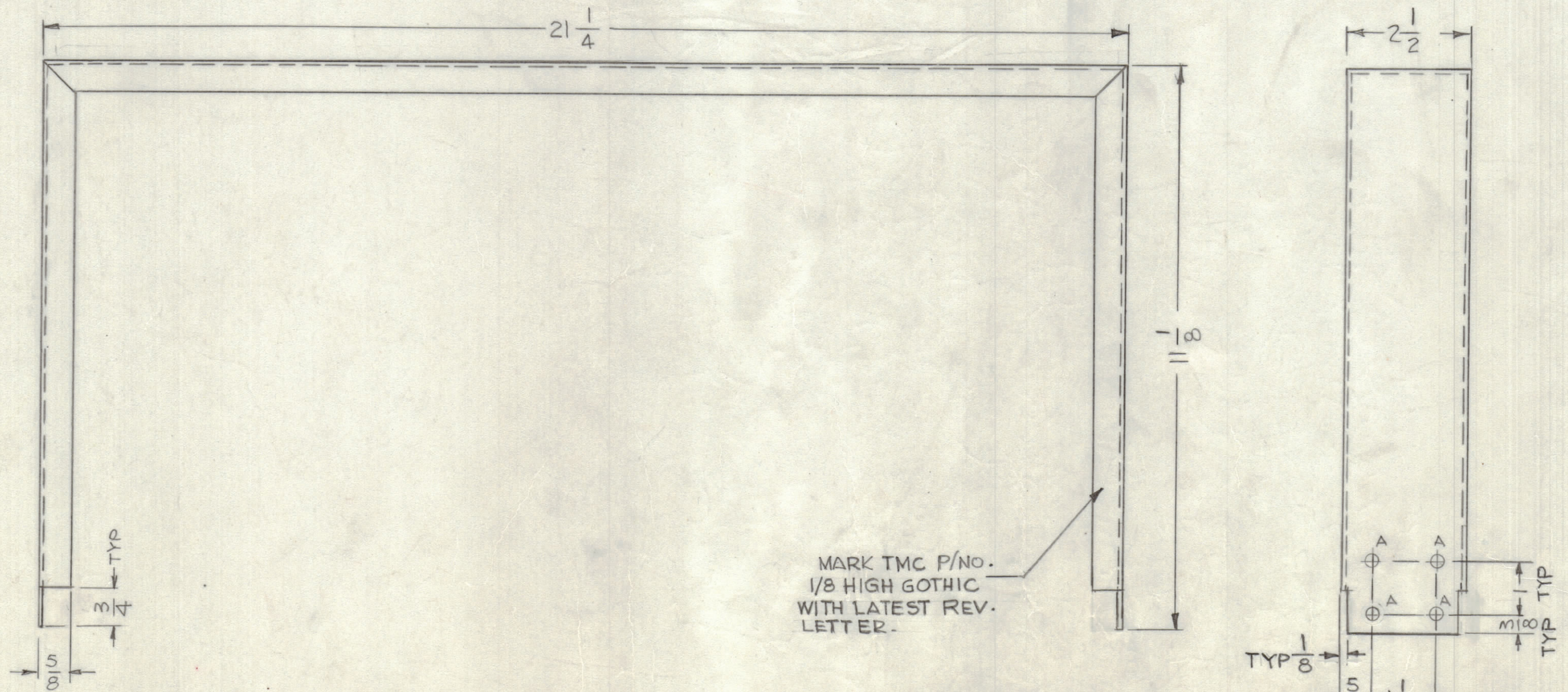
MS 6969-2
1 REQ'D
SCALE: 1/4



MS 6969-3
1 REQ'D
SCALE: 1/4



HOLE -
A- 15/64 DIA. 12 REQ'D
B- 5/8 DIA 2 REQ'D



MS 6969-
2 REQ'D

- UNLESS OTHERWISE SPECIFIED:
1. USE MATERIAL THICKNESS FOR MAXIMUM RADIUS ON ALL BENDS.
 2. ALL ANGULAR BENDS 90 DEGREES.
 3. REMOVE ALL BURRS AND SHARP EDGES.

MARK TMC P/NO.
1/8 HIGH GOTHIC
WITH LATEST REV.
LETTER.

TER-5000-600B	
QTY / UNIT	ASS'Y NO.
APPLICATION	
CODE	

UNLESS OTHERWISE SPECIFIED
DIMENSIONS ARE IN INCHES
AND INCLUDE CHEMICALLY APPLIED
OR PLATED FINISHES

TOLERANCES ON

DECIMALS	FRACTIONS
.X ± .05	± 1/64
.XX ± .01	ANGLES
.XXX ± .005	± 0° -30'

MATERIAL .081THK
ALUM. 5052-H32

FINISH S404
VEL IRIDITE

QTY. REQ.	ITEM	PART NO.	DESCRIPTION	SYMBOL
LIST OF MATERIAL				
THE TECHNICAL MATERIEL CORP. MAMARONECK, NEW YORK				
BRACKET, MTG SHOCK ABSORBER				
FINAL APPROVAL		DATE		
MECH. DES.		DATE		
ELECT. DES.		DATE		
CHECKED		DATE		
DRAWN	G-D-L	DATE	9-25-79	
SIZE	CODE	IDENT NO.	DWG NO.	ISSUE
D	82679	MS 6969		
SCALE 1/2				SHEET OF

NOTICE TO PERSONS RECEIVING THIS DRAWING
THE TECHNICAL MATERIEL CORPORATION claims proprietary right in the material disclosed herein.
This drawing is issued in confidence for engineering information only and may not be reproduced or used
to manufacture anything shown hereon without permission from THE TECHNICAL MATERIEL CORPORATION
to the user. This drawing is loaned for mutual assistance and is subject to recall at any time.