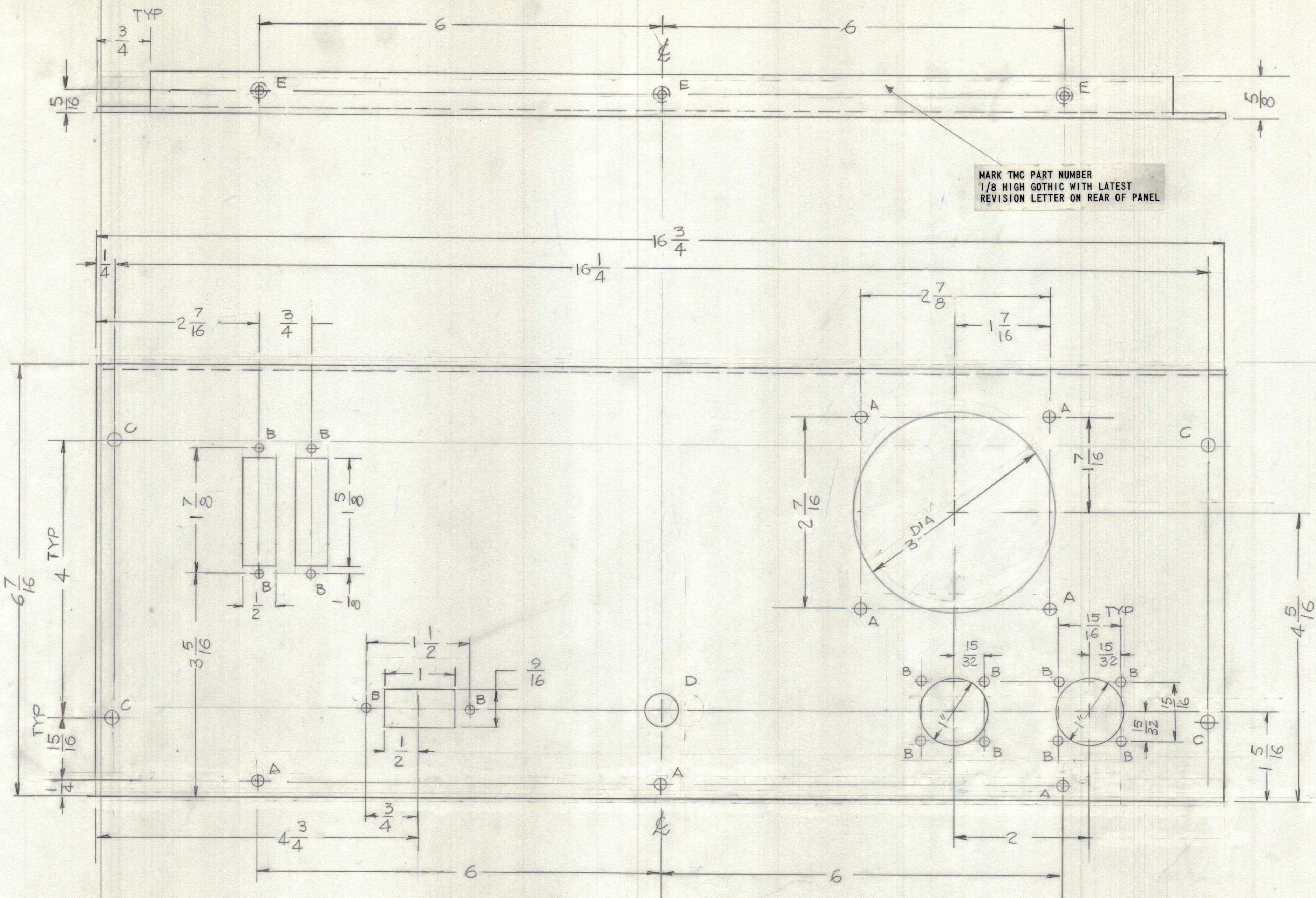


REVISIONS				DATE	APPROVED
E.M.N.O	DRAFT	CHKD	ZONE LTR	DESCRIPTION	



HOLES
 A - 11/64 DIA 7 REQ'D
 B - 9/64 DIA 14 REQ'D
 C - 13/64 DIA 4 REQ'D
 D - 1/2 DIA
 E - .191 - .194 DIA 3 REQ'D

UNLESS OTHERWISE SPECIFIED:
 1. USE MATERIAL THICKNESS FOR MAXIMUM RADIUS ON ALL BENDS.
 2. ALL ANGULAR BENDS 90 DEGREES.
 3. REMOVE ALL BURRS AND SHARP EDGES.
 4. MOUNT INSERTS AFTER FINISHING.

REF: LD3107

QTY / UNIT	MODEL USED ON	ASS'Y NO.
	CPC-11	
APPLICATION		
CODE		

NOTICE TO PERSONS RECEIVING THIS DRAWING
 THE TECHNICAL MATERIEL CORPORATION claims proprietary right in the material disclosed hereon. This drawing is issued in confidence for engineering information only and may not be reproduced or used to manufacture anything shown hereon without permission from THE TECHNICAL MATERIEL CORPORATION to the user. This drawing is loaned for mutual assistance and is subject to recall at any time.

UNLESS OTHERWISE SPECIFIED DIMENSIONS ARE IN INCHES AND INCLUDE CHEMICALLY APPLIED OR PLATED FINISHES	
TOLERANCES ON	
DECIMALS	FRACTIONS
.X ± .05	± 1/64
.XX ± .01	ANGLES
.XXX ± .005	± 0° -30'
MATERIAL .063T4K	
ALUM 8052-H32	
FINISH 8404	
YEL .12IDITE	

3	1	NT129-0632-4	NUT, ROUND	E
QTY. REQ.	ITEM	PART NO.	DESCRIPTION	SYMBOL
LIST OF MATERIAL				
THE TECHNICAL MATERIEL CORP. MAMARONECK, NEW YORK				
REAR, PLATE				
FINAL APPROVAL		DATE		
MECH. DES.		DATE		
ELECT. DES.		DATE		
CHECKED		DATE		
DRAWN		DATE		
SIZE	CODE	IDENT NO.	DWG NO.	ISSUE
D	82679		MS 6909	X
SCALE 1:1		SHEET OF		