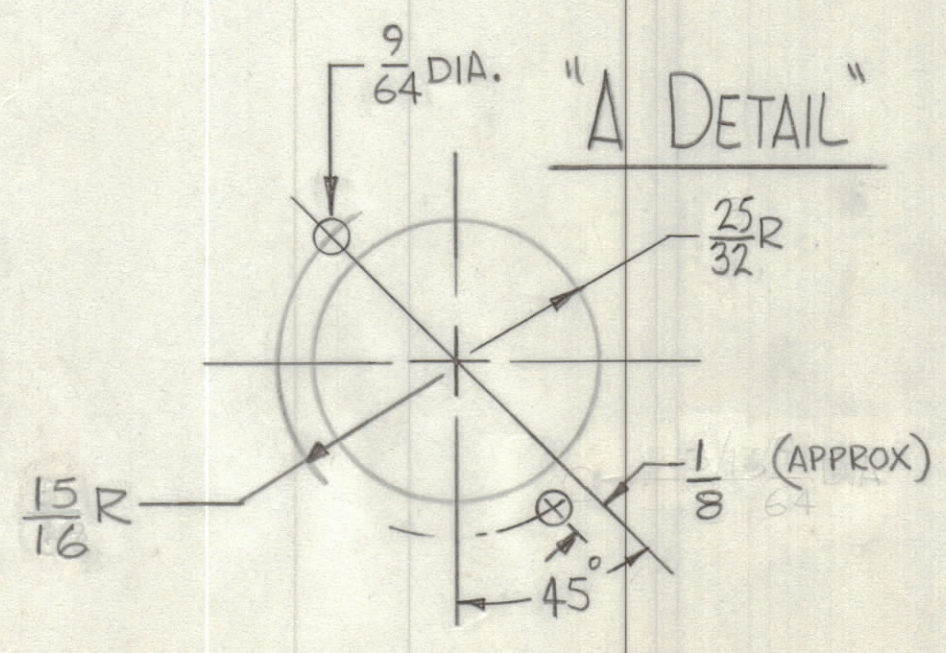
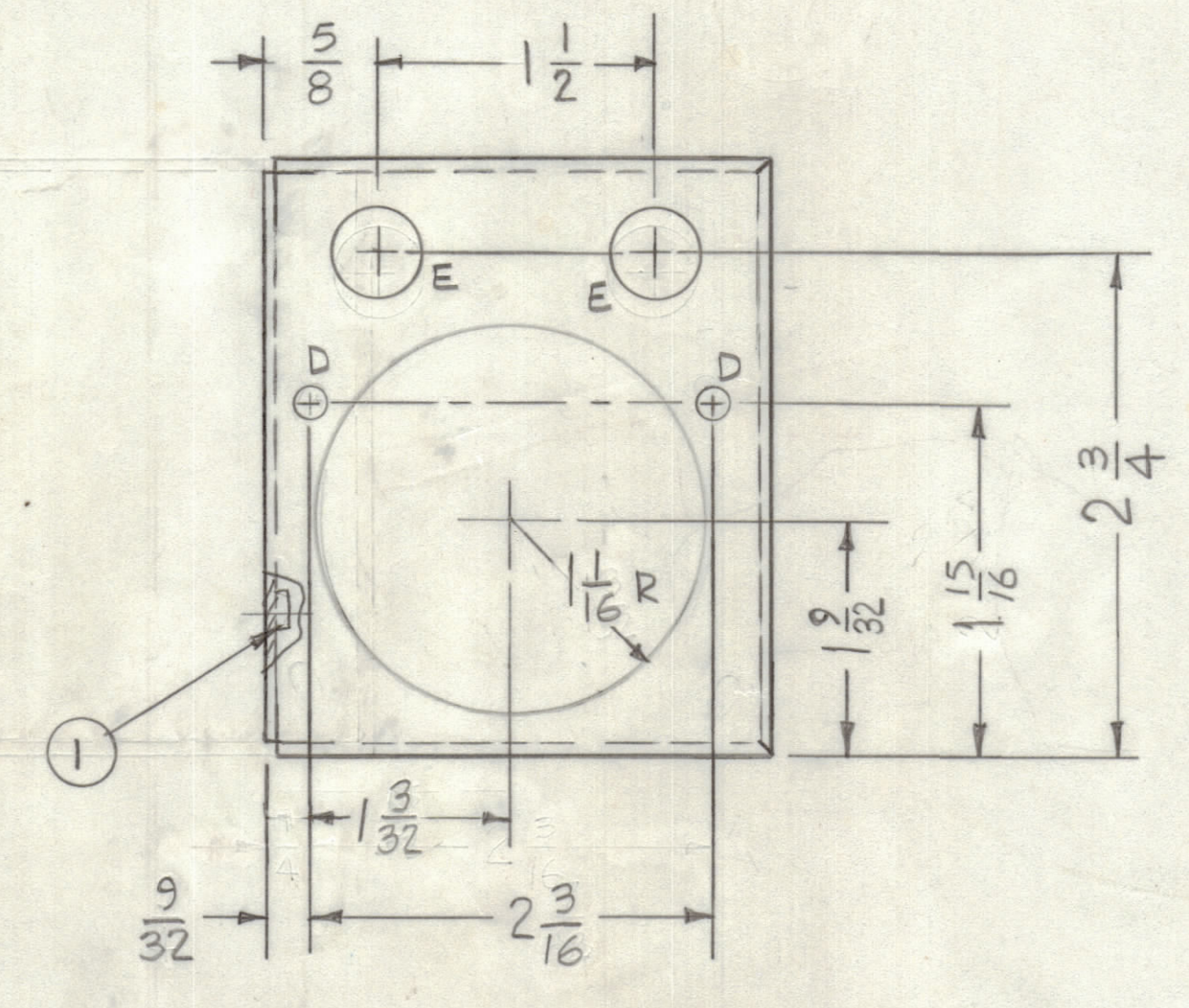
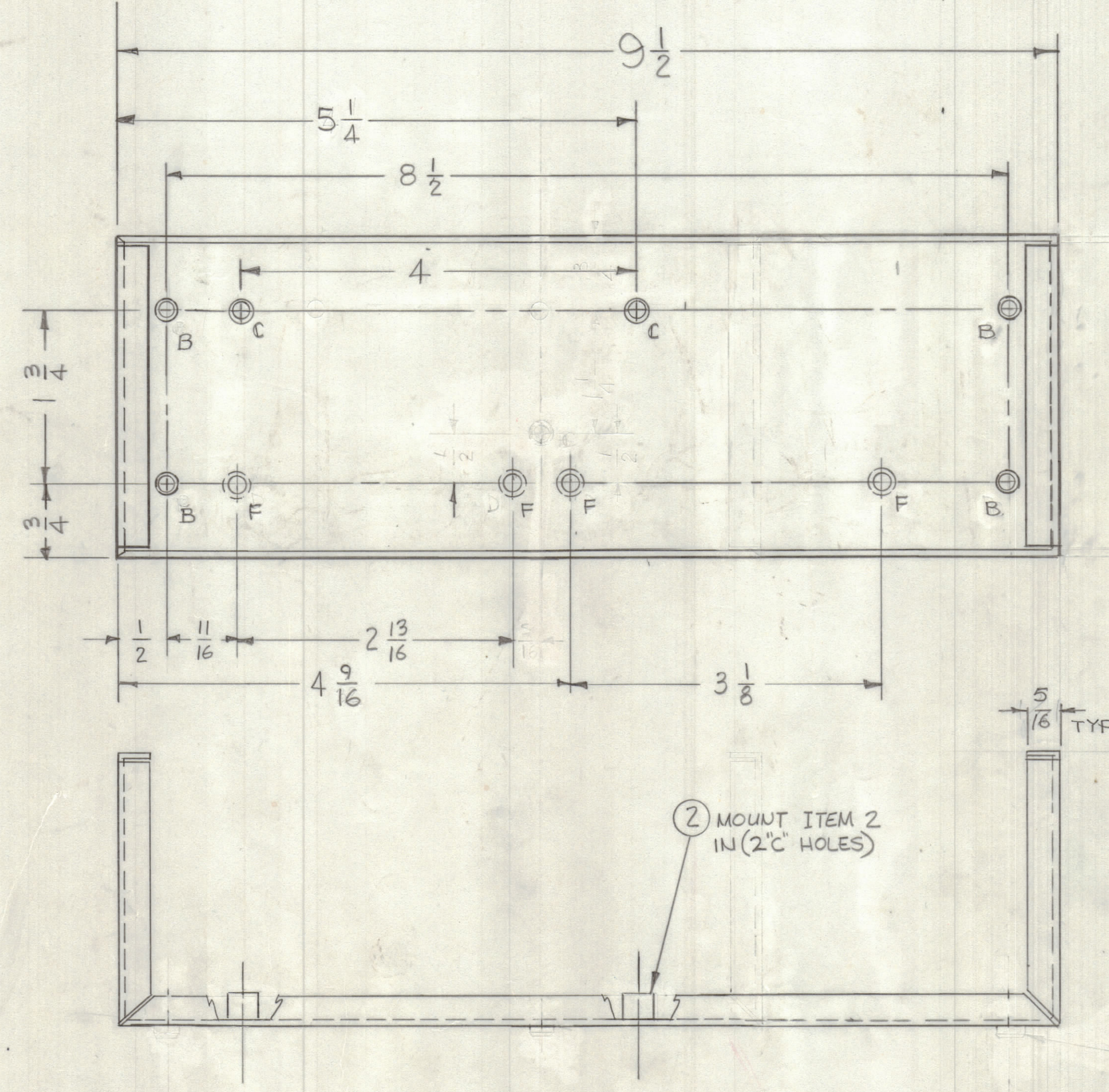
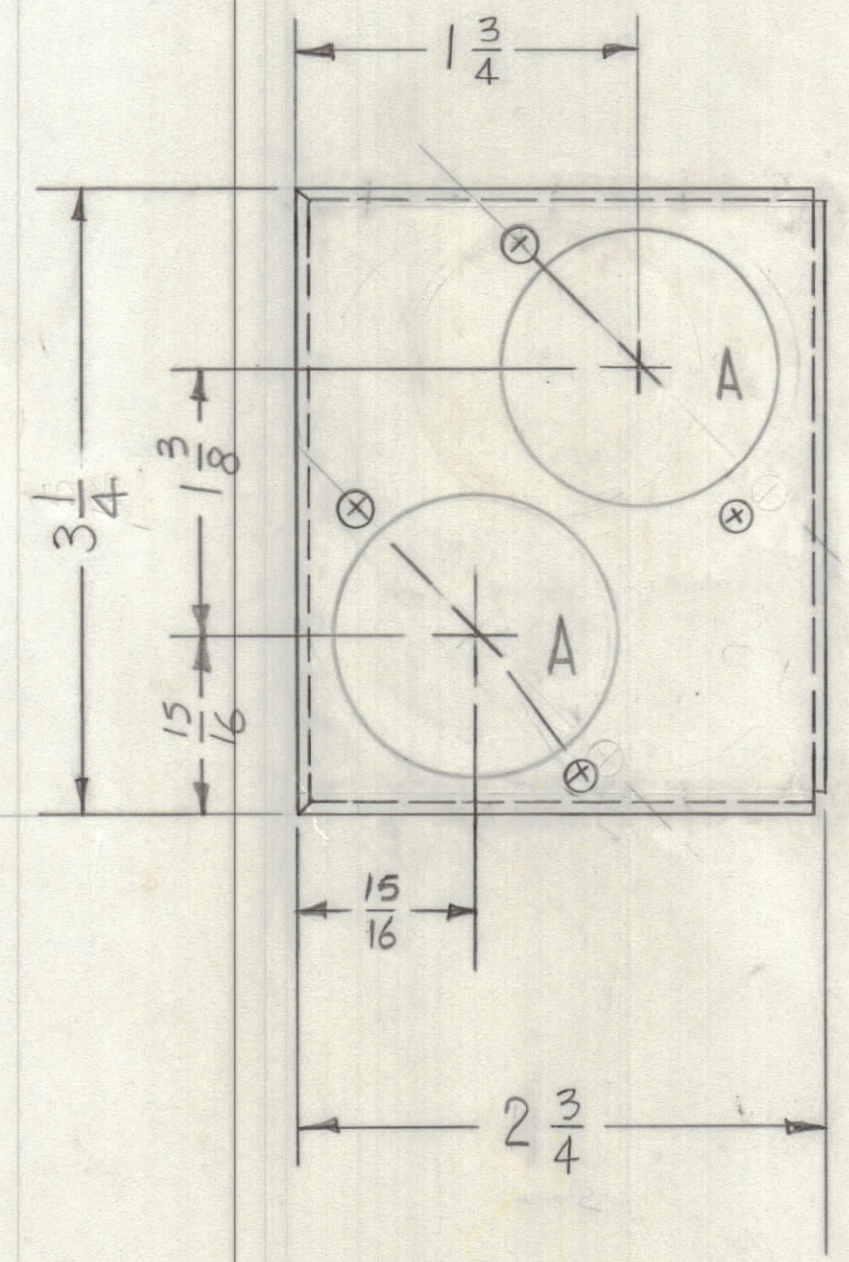


REVISIONS							
E.M.N.O.	DRAFT	CHKD	ZONE	LTR	DESCRIPTION	DATE	APPROVED
1	RU	WSS		0	ORIGINAL RELEASE FOR PRODUCTION	7-6-78	*



Hole	Description	Qty
A	See Detail	2
B	.221-.224 DIA	4
C	.189 DIA	2
D	11/64 DIA	2
E	1/2 DIA	2
F	.144 CSWK 82° TO .284 DIA	4

UNLESS OTHERWISE SPECIFIED:

- USE MATERIAL THICKNESS FOR MAXIMUM RADIUS ON ALL BENDS.
- ALL ANGULAR BENDS 90 DEGREES.
- REMOVE ALL BURRS AND SHARP EDGES.
- MOUNT INSERTS AFTER FINISHING.

1	DPC-10	BMA 547
QTY / UNIT	MODEL USED ON	ASS'Y NO.
APPLICATION		
CODE		
NOTICE TO PERSONS RECEIVING THIS DRAWING		
THE TECHNICAL MATERIEL CORPORATION claims proprietary right in the material disclosed herein. This drawing is issued in confidence for engineering information only and may not be reproduced or used to manufacture anything shown herein without permission from THE TECHNICAL MATERIEL CORPORATION to the user. This drawing is loaned for mutual assistance and is subject to recall at any time.		

UNLESS OTHERWISE SPECIFIED DIMENSIONS ARE IN INCHES AND INCLUDE CHEMICALLY APPLIED OR PLATED FINISHES		FINAL APPROVAL * [Signature]	DATE 7/6/78
TOLERANCES ON		ELECT. DES.	DATE
DECIMALS .X ± .05 .XX ± .01 .XXX ± .005	FRACTIONS ± 1/64 ANGLES ± 0° - 30'	CHECKED	DATE
MATERIAL .081 AL AL		DRAWN	DATE 6-26-78
FINISH YEL IRIDITE			

QTY. REQ.	ITEM	PART NO.	DESCRIPTION	SYMBOL
2	2	TE108-3	STAND-OFF, RIVET TYPE	C
4	1	NT129 0832-4	NUT, ROUND	B

LIST OF MATERIAL			
THE TECHNICAL MATERIEL CORP. MAMARONECK, NEW YORK			
CHASSIS, DPC POWER/SUPPLY			
SIZE	CODE IDENT NO.	DWG NO.	ISSUE
D	82679	MSG6906	0
SCALE		SHEET OF	