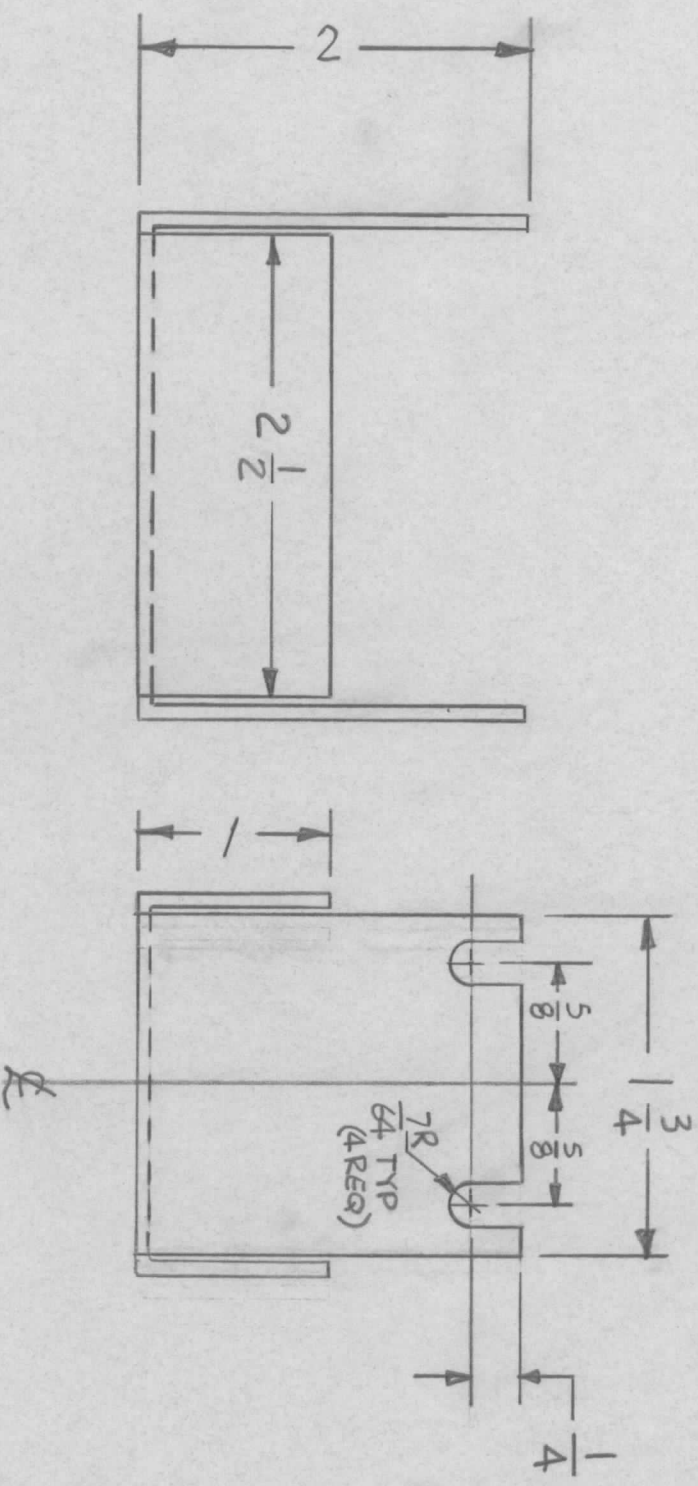
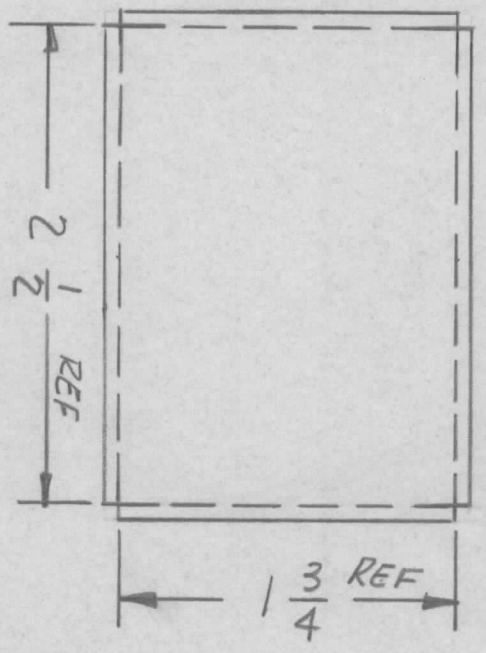


| REVISIONS | | | | |
|---------------------------------|-------|------|------|----------|
| EM.N. NO. | DRAFT | CHKD | ZONE | LTR |
| | | | | |
| DESCRIPTION | | | | DATE |
| ORIGINAL RELEASE FOR PRODUCTION | | | | 5-16-83 |
| | | | | APPROVED |



- UNLESS OTHERWISE SPECIFIED:
1. USE MATERIAL THICKNESS FOR MAXIMUM RADIUS ON ALL BENDS.
 2. ALL ANGULAR BENDS 90 DEGREES.
 3. REMOVE ALL BURRS AND SHARP EDGES.
 4. MOUNT INSERTS AFTER FINISHING.



| | | | | | |
|-------------|---|---------------|----------|-----------|---------|
| QTY / UNIT | 1 | MODEL USED ON | MFTA-10K | ASS'Y NO. | AS166-1 |
| APPLICATION | | | | | |
| CODE | | | | | |

NOTICE TO PERSONS RECEIVING THIS DRAWING
 THE TECHNICAL MATERIEL CORPORATION claims proprietary right in the material disclosed hereon. This drawing is issued in confidence for engineering information only and may not be reproduced or used to manufacture anything shown hereon without permission from THE TECHNICAL MATERIEL CORPORATION to the user. This drawing is loaned for mutual assistance and is subject to recall at any time.

| | | |
|---|----------|-----------|
| UNLESS OTHERWISE SPECIFIED DIMENSIONS ARE IN INCHES AND INCLUDE CHEMICALLY APPLIED OR PLATED FINISHES | DECIMALS | FRACTIONS |
| .X ± .05 | 1/64 | |
| .XX ± .01 | | ANGLES |
| .XXX ± .005 | | 0° - 30° |

MATERIAL
 .064 THK
 AL-ALY 5052-H32
 FINISH
 S404
 YEL IRIDITE

| REQ'D ITEM | PART NUMBER | DESCRIPTION | SYM. |
|------------------|-------------|-------------|------|
| LIST OF MATERIAL | | | |

THE TECHNICAL MATERIEL CORP.
 MAMARONECK, NEW YORK
 BRACKET, WAFER SUPPORT

| | | | | | | | | | | | | | |
|----------------|------|------------|------|-------------|------|---------|------|---------|---------|------|-----------------|----------|-------|
| FINAL APPROVAL | DATE | MECH. DES. | DATE | ELECT. DES. | DATE | CHECKED | DATE | DRAWN | DATE | SIZE | CODE IDENT. NO. | DWG. NO. | ISSUE |
| | | | | | | | | R. Vano | 5/14/83 | B | 82679 | MS6905 | Ø |
| SCALE | | | | | | | | | | | SHEET | OF | |