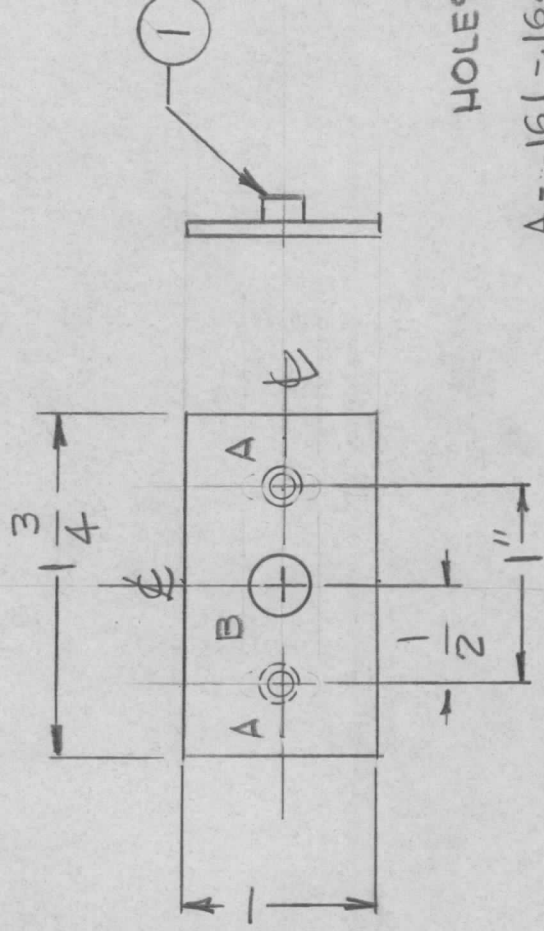


REVISIONS

APPLICATION

QTY	MODEL USED ON	ASSY NO.	LTR	DESCRIPTION	DATE	E.M.N.NO	DRAFT	CHKD	APPD
1	PALA-101K		φ	ORIGINAL RELEASE	6-19-78	W	GDL	WBS	*



HOLES.

A - .161 - .164 DIA ZREQ
B - 5/16 DIA

FINISH NOTES:

- S404 - IRIDITE 14-2 AL-COAT.
- S114 - ZINC CHROMATE PRIMER } FRONT AND
- S115 - SMOOTH GRAY ENAMEL } EDGES ONLY

OR
PRIME AND PAINT PER CUSTOMER'S SPECIFICATIONS

2	1	NT129044b-4	NUT ROUND		
REQ'D	ITEM	PART NUMBER	DESCRIPTION	SYM.	

LIST OF MATERIAL

THE TECHNICAL MATERIEL CORP.
MAMARONECK, NEW YORK

PLATE, ADAPTER

FINAL APPROVAL	DATE	DATE	DATE	DATE	DATE
* GDS	6/19/78				
MECH. DES.					
ELECT. DES.					
CHECKED					
DRAWN	G.D.L				

SIZE	CODE IDENT. NO.	DWG NO.	ISSUE
A	82679	MS 6904	φ
SCALE	1:1	SHEET	OF

NOTICE TO PERSONS RECEIVING THIS DRAWING
THE TECHNICAL MATERIEL CORPORATION claims proprietary right in the material disclosed hereon. This drawing is issued in confidence for engineering information only and may not be reproduced or used to manufacture anything shown hereon without permission from THE TECHNICAL MATERIEL CORPORATION to the user. This drawing is loaned for mutual assistance and is subject to recall at any time.