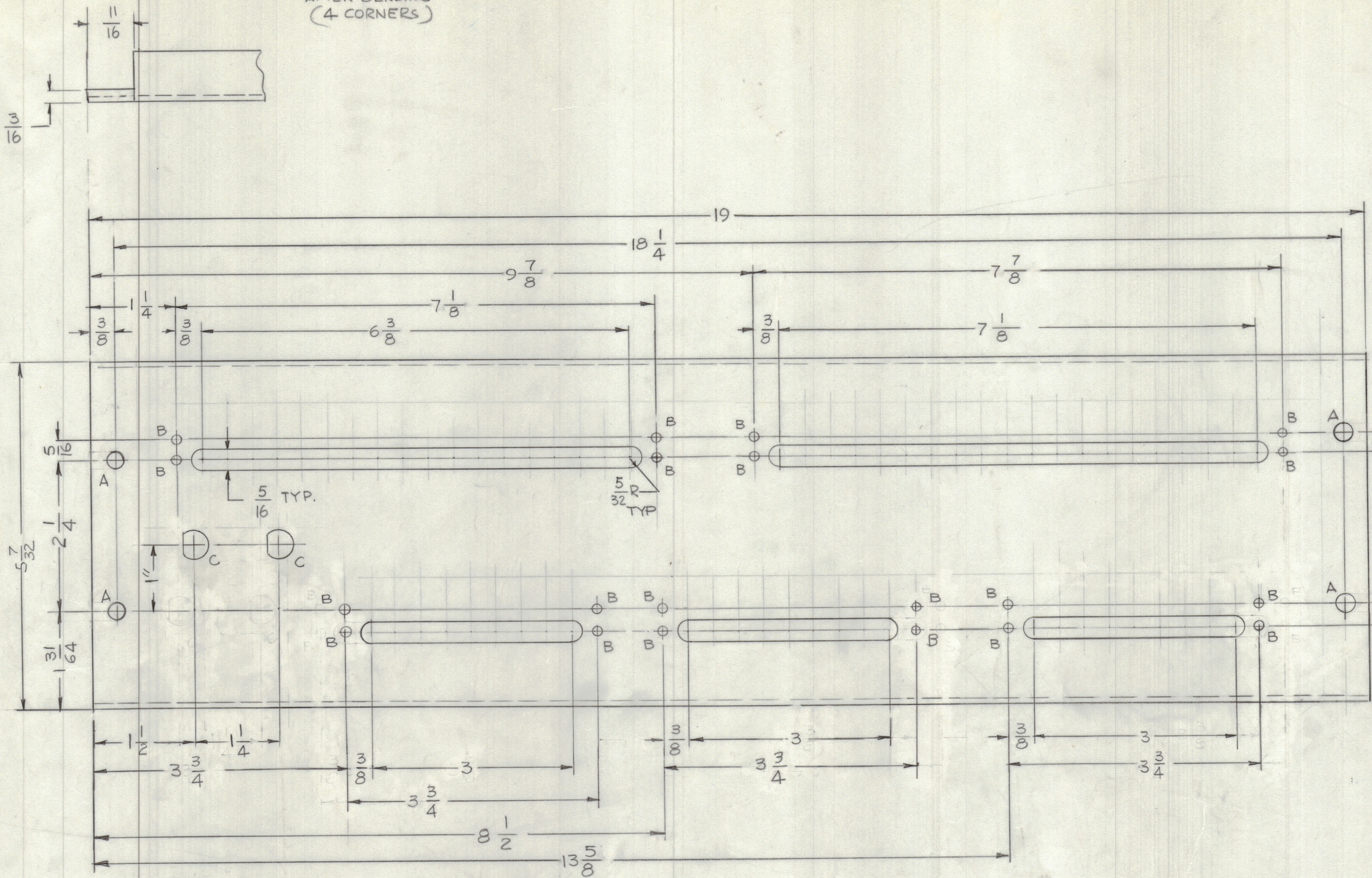


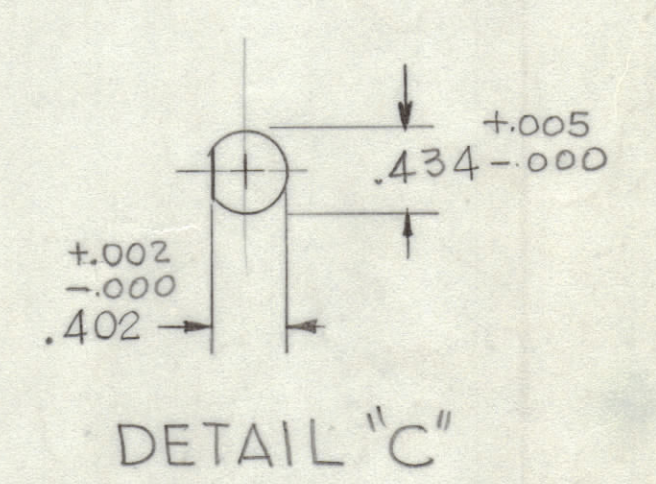
REVISIONS							
E.M.N.O.	DRAFT	CHKD	ZONE	LTR	DESCRIPTION	DATE	APPROVED
				X1	"C" HOLES RELOCATED & THREE SLOTS MODIFIED	6-15-78	
A	SL	WJS		Ø	ORIGINAL RELEASE FOR PRODUCTION	6-15-78	*

MACHINE CORNERS
AFTER BENDING
(4 CORNERS)



HOLES :

- A - 1/4 DIA 4 REQ'D
- B - 9/64 DIA 20 REQ'D
- C - SEE DETAIL 2 REQ'D



UNLESS OTHERWISE SPECIFIED:

1. USE MATERIAL THICKNESS FOR MAXIMUM RADIUS ON ALL BENDS.
2. ALL ANGULAR BENDS 90 DEGREES.
3. REMOVE ALL BURRS AND SHARP EDGES.

1	AX5237	
QTY / UNIT	MODEL USED ON	ASS'Y NO.
APPLICATION		
CODE		

NOTICE TO PERSONS RECEIVING THIS DRAWING
THE TECHNICAL MATERIEL CORPORATION claims proprietary right in the material disclosed hereon. This drawing is issued in confidence for engineering information only and may not be reproduced or used to manufacture anything shown hereon without permission from THE TECHNICAL MATERIEL CORPORATION to the user. This drawing is loaned for mutual assistance and is subject to recall at any time.

REF: LD3082

UNLESS OTHERWISE SPECIFIED DIMENSIONS ARE IN INCHES AND INCLUDE CHEMICALLY APPLIED OR PLATED FINISHES	
TOLERANCES ON DECIMALS .X ± .05 .XX ± .01 .XXX ± .005	FRACTIONS ± 1/64 ANGLES ± 0° -30'
MATERIAL .081THK ALUM. 5052-H32	
FINISH 5404 VEL. IRIDIUM	

QTY. REQ.	ITEM	PART NO.	DESCRIPTION	SYMBOL
LIST OF MATERIAL				
FINAL APPROVAL	DATE	THE TECHNICAL MATERIEL CORP. MAMARONECK, NEW YORK		
MECH. DES.	DATE	INTERFACE PANEL		
ELECT. DES.	DATE	SIZE CODE IDENT NO. DWG NO.		
CHECKED	DATE	D	82679	MS 6903
DRAWN	DATE	SCALE 1:1		SHEET OF