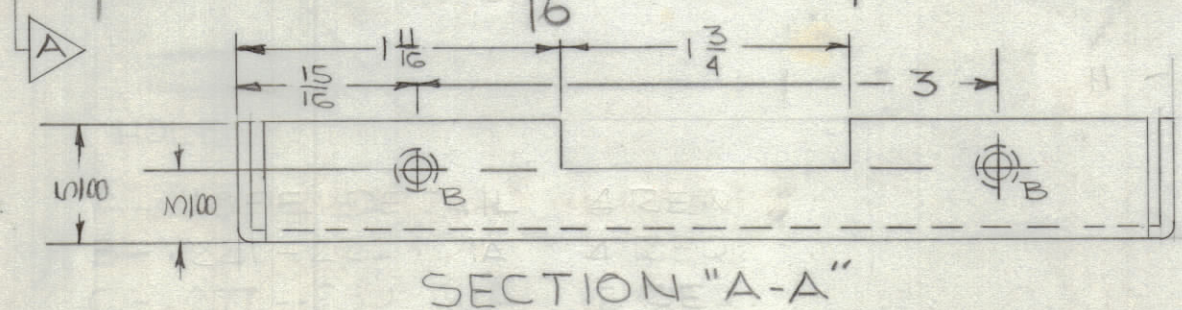
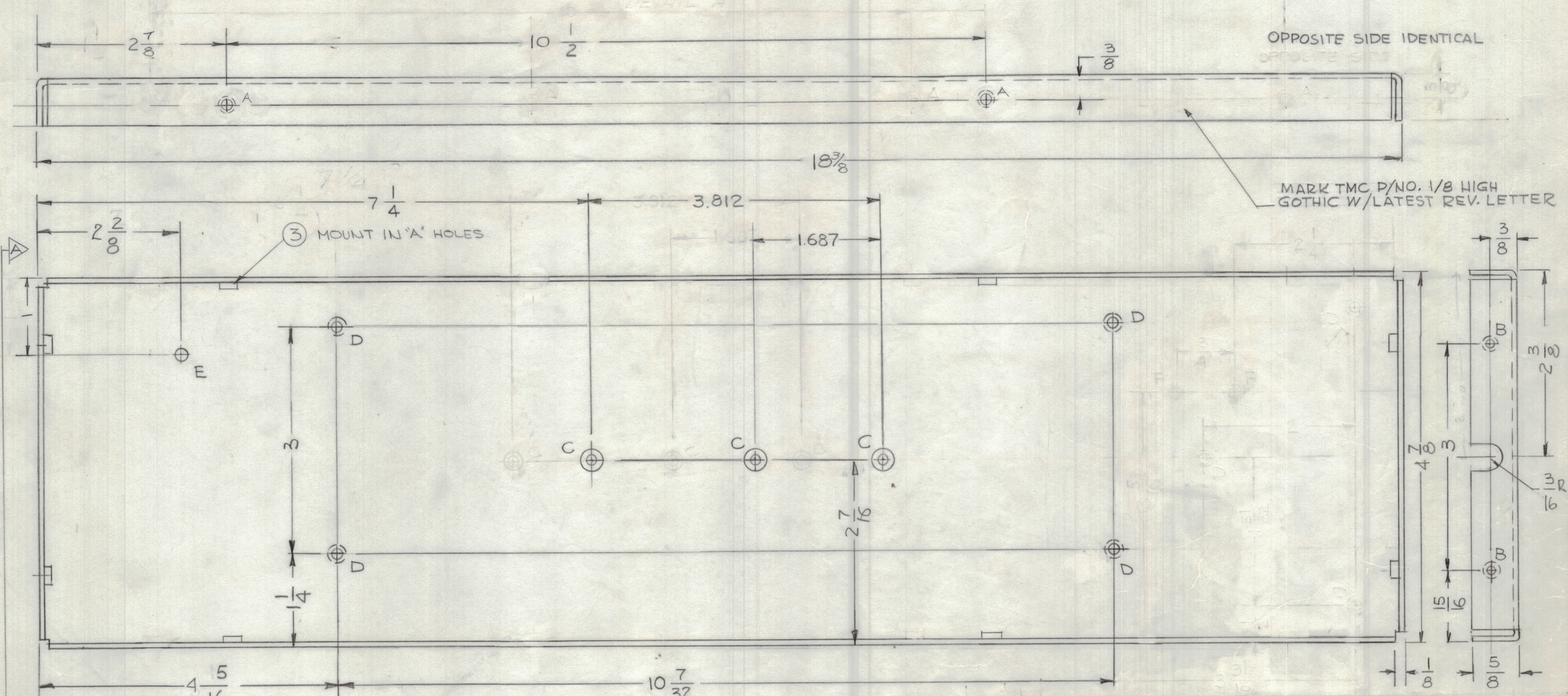


UNLESS OTHERWISE SPECIFIED:
 1. USE MATERIAL THICKNESS FOR MAXIMUM RADIUS ON ALL BENDS.
 2. ALL ANGULAR BENDS 90 DEGREES.
 3. REMOVE ALL BURRS AND SHARP EDGES.
 4. MOUNT INSERTS AFTER FINISHING.

HOLE	QTY	DESCRIPTION
A	4	.191-.194 DIA.
B	4	.221-.224 DIA.
C	3	.277-.280 DIA.
D	4	.144 DIA CSK 82° TO .284 DIA.
E	1	3/16 DIA.

REVISIONS						
ZONE	LTR	DESCRIPTION	DATE	DRAFT	CHK'D	APP'D
	Ø	ORIGINAL RELEASE FOR PRODUCTION	6-6-78			*



QTY. REQ.	ITEM	PART NO.	DESCRIPTION	SYMBOL
4	3	NT129-632-4	NUT, PLN, SPLINE	A
3	2	NT129-1224-4	NUT, PLN, SPLINE	C
4	1	NT129-832-4	NUT, PLN, SPLINE	B

LIST OF MATERIAL
THE TECHNICAL MATERIEL CORP.
 MAMARONECK, NEW YORK

LEFT SIDE PLATE

INTERPRET DRAWING PER LISTED DOCUMENTS	
DIMENSIONING	MIL - STD - 8
SURFACE ROUGHNESS	MIL - STD - 10
ABBREVIATIONS	MIL - STD - 12
ELECTRONIC SYMBOLS	MIL - STD - 15
WELDING SYMBOLS	JAN - STD - 19
NEXT ASSY	USED ON
APPLICATION	

UNLESS OTHERWISE SPECIFIED DIMENSIONS ARE IN INCHES AND INCLUDE CHEMICALLY APPLIED OR PLATED FINISHES REMOVE ALL BURRS AND SHARP EDGES	FINAL APPROVAL * [Signature]	DATE 6/2/78
TOLERANCES ON	MECH. DES.	DATE
DECIMALS	ELECT. DES.	DATE
.X ± .05	CHECKED [Signature]	DATE 11/27/77
.XX ± .01	DRAWN G.D.L.	DATE 7-10-77
.XXX ± .005		

NOTICE TO PERSONS RECEIVING THIS DRAWING
 THE TMC SYSTEMS AND POWER CORPORATION claims proprietary right in the material disclosed herein. This drawing is issued in confidence for engineering information only and may not be reproduced or used to manufacture anything shown herein without permission from THE TMC SYSTEMS AND POWER CORPORATION to the user. This drawing is loaned for mutual assistance and is subject to recall at any time.

MATERIAL .063 THK ALUM ALY 3052-H32	SIZE	CODE IDENT. NO.	DWG NO.	ISSUE
FINISH 5404 YEL - IRIDITE	C	82679	MS6817	Ø

SCALE 1:1	SHEET	OF
-----------	-------	----