

4

3

2

1

REVISIONS						
ZONE	LTR	DESCRIPTION	DATE	DRAFT	CHK'D	APPD
	X1	"A" HOLE ADD & TABL DELETED				
	X2	"B" HOLE WAS 5/16	8-17-77			
	X3	DIA. HOLES UPDATED	9-14-77			
	X4	- 53/64 WAS .858	9-28-77			
	X5	9/16 WAS 7/16	10-4-77			
	X6	"A" HOLES WERE ON SIDES	10-27-77	PH		
	X7	"D" HOLES WERE 1/2	12-16-77	PH		
		ORIGINAL RELEASE	9-26-80	dw		

HOLE:
 A - .120 DIA. C-SNK 82° TO .230 DIA. 4 REQ.
 B - 1/2 DIA 2 REQ
 C - 3/8 DIA 7 REQ
 D - 11/16 DIA 7 REQ

D

D

C

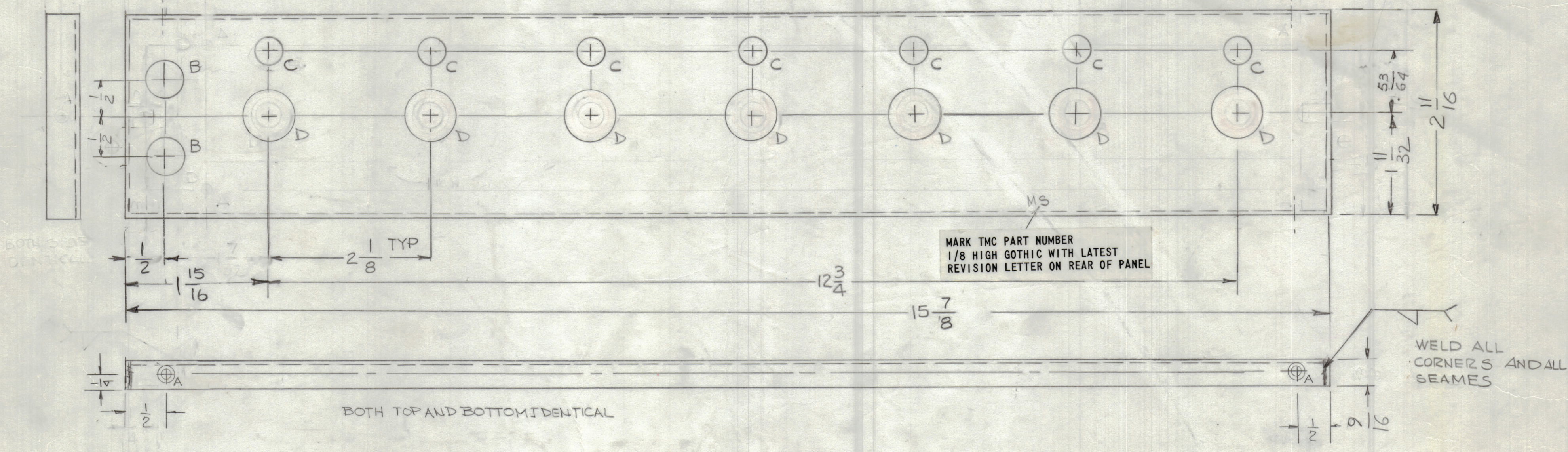
C

B

B

A

A



FINISH NOTES:
 1. S404 - IRIDITE 14-2 AL-COAT.
 2. S114 - ZINC CHROMATE PRIMER } FRONT AND
 3. SMOOTH TMC GRAYGE } EDGES ONLY
 OR
 PRIME AND PAINT PER CUSTOMER'S SPECIFICATIONS

FINISH NOTE:
 PAINT ALL SIDES 1/16 ALL AROUND OF
 FACE MAT'G OR FLAT BLACK

REF: LD 3075

INTERPRET DRAWING PER LISTED DOCUMENTS	
	DIMENSIONING MIL - STD - 8
	SURFACE ROUGHNESS MIL - STD - 10
	ABBREVIATIONS MIL - STD - 12
	ELECTRONIC SYMBOLS MIL - STD - 15
	WELDING SYMBOLS JAN - STD - 19
AX5224	RCST-1
NEXT ASSY	USED ON
APPLICATION	

TOLERANCES ON	
DECIMALS	FRACTIONS
.X ± .05	± 1/64
.XX ± .01	ANGLES ± 0° -30'
.XXX ± .005	
MATERIAL .051 THK ALUM 5052-H32	
FINISH AS NOTED	

QTY. REQ.	ITEM	PART NO.	DESCRIPTION	SYMBOL
LIST OF MATERIAL				
THE TECHNICAL MATERIEL CORP. MAMARONECK, NEW YORK				
PLATE, ESCUTCHEON				
SIZE	CODE IDENT. NO.	DWG NO.	ISSUE	
C	82679	MS6816	φ	
SCALE 1:1			SHEET	OF

NOTICE TO PERSONS RECEIVING THIS DRAWING
 THE TMC SYSTEMS AND POWER CORPORATION claims proprietary right in the material disclosed hereon. This drawing is issued in confidence for engineering information only and may not be reproduced or used to manufacture anything shown hereon without permission from THE TMC SYSTEMS AND POWER CORPORATION to the user. This drawing is loaned for mutual assistance and is subject to recall at any time.

4

3

2

1

MS6816 9189SW