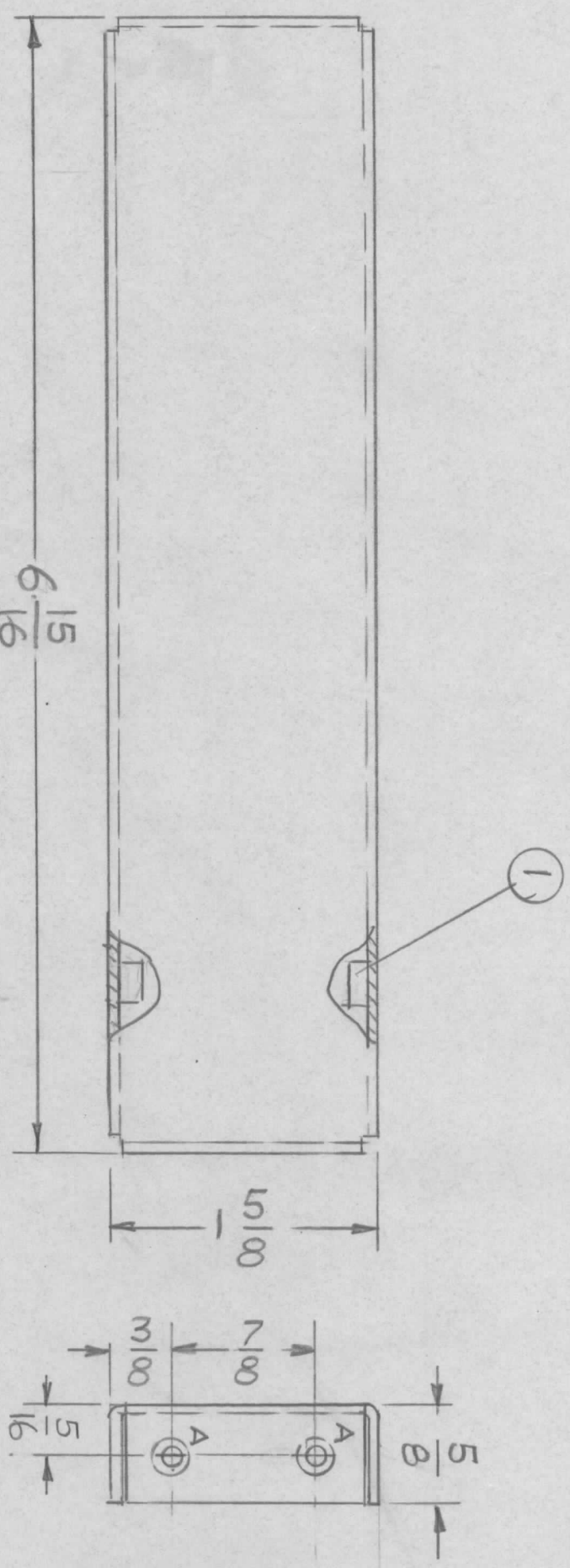
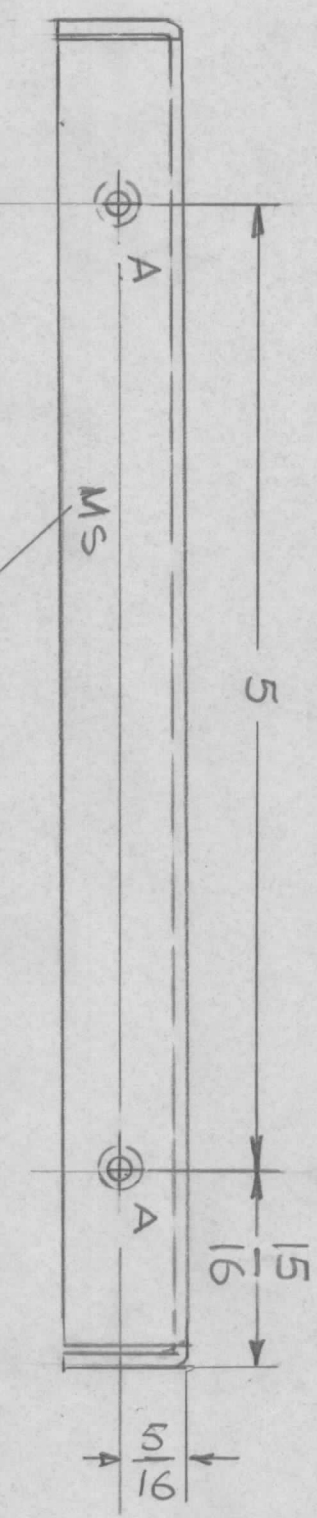


REVISIONS				DATE	APPROVED
E.M.N. NO.	DRAFT	CHKD	ZONE	LTR	DESCRIPTION
					ORIGINAL RELEASE FOR PRODUCTION
					2.11.80
					AB.



HOLES -
A - .191 - .194 DIA 8 REQ.



LEFT SIDE MIRROR IMAGE

MARK TMC PART NUMBER
1/8 HIGH GOTHIC WITH LATEST
REVISION LETTER

- UNLESS OTHERWISE SPECIFIED:
1. USE MATERIAL THICKNESS FOR MAXIMUM RADIUS ON ALL BENDS.
 2. ALL ANGULAR BENDS 90 DEGREES.
 3. REMOVE ALL BURRS AND SHARP EDGES.
 4. MOUNT INSERTS AFTER FINISHING.

QTY / UNIT	MODEL USED ON	ASS'Y NO.
1	REP-1	
APPLICATION		
CODE		

DECIMALS	FRACTIONS
X ± .05	1/64
.XX ± .01	ANGLES
.XXX ± .005	0° - 30°
MATERIAL .063THK	
ALUM-5052-H32	
FINISH S404	
VEL IRIDITE	

REQ'D	ITEM	PART NUMBER	DESCRIPTION	SYM.
8	1	NT129 0632-4	NUT ROUND	

LIST OF MATERIAL

THE TECHNICAL MATERIEL CORP.
MAMARONECK, NEW YORK

FINAL APPROVAL	DATE	MECH. DES.	DATE	ELECT. DES.	DATE
CHECKED	DATE	DRAWN	DATE		
		G.D.L.	6-17-77		
SIZE	CODE IDENT. NO.	DWG NO.	ISSUE		
B	82679	MS 6805	Φ		
SCALE	1:1	SHEET	OF		

RIGHT & LEFT SIDE PLATE

NOTICE TO PERSONS RECEIVING THIS DRAWING
THE TECHNICAL MATERIEL CORPORATION claims proprietary right in the material disclosed hereon. This drawing is issued in confidence for engineering information only and may not be reproduced or used to manufacture anything shown hereon without permission from THE TECHNICAL MATERIEL CORPORATION to the user. This drawing is loaned for mutual assistance and is subject to recall at any time.