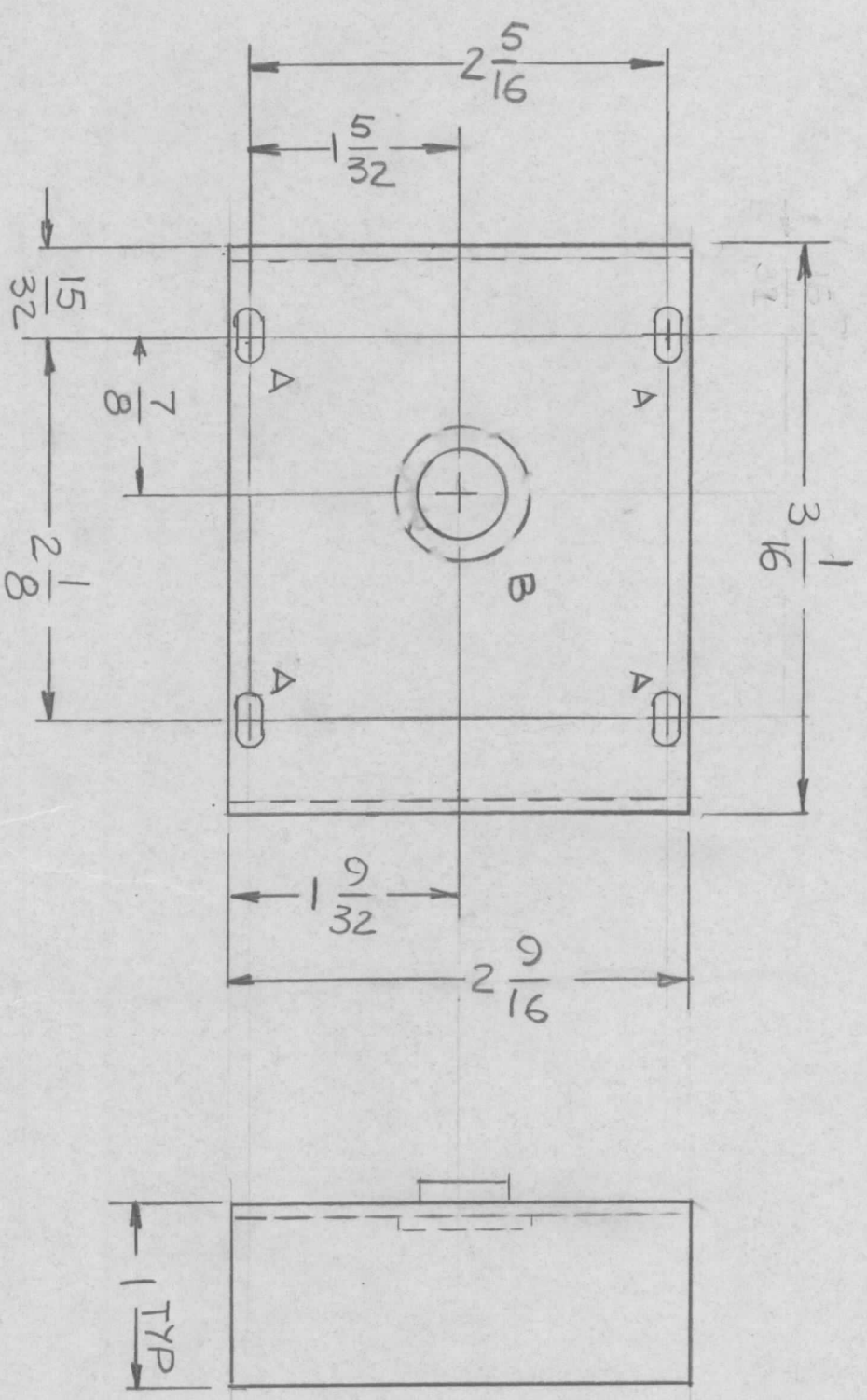


REVISIONS				DATE	APPROVED
EM.N. NO.	DRAFT	CHKD	ZONE	LTR	DESCRIPTION



HOLES -
 A - $9/64 \times 9/32$ SLOT 4REQ
 B - $.5000 \pm .0005$ DIA 1REQ

- UNLESS OTHERWISE SPECIFIED:
1. USE MATERIAL THICKNESS FOR MAXIMUM RADIUS ON ALL BENDS.
 2. ALL ANGULAR BENDS 90 DEGREES.
 3. REMOVE ALL BURRS AND SHARP EDGES.
 4. MOUNT INSERTS AFTER FINISHING.

QTY / UNIT	1	MODEL USED ON	GPT-10KLF	ASSY NO.	A5703
APPLICATION					
CODE					

NOTICE TO PERSONS RECEIVING THIS DRAWING
 THE TECHNICAL MATERIEL CORPORATION claims proprietary right in the material disclosed hereon. This drawing is issued in confidence for engineering information only and may not be reproduced or used to manufacture anything shown hereon without permission from THE TECHNICAL MATERIEL CORPORATION to the user. This drawing is loaned for mutual assistance and is subject to recall at any time.

DECIMALS	X ± .05	TOLS.	FRACTIONS	1/64
	.XX ± .01		ANGLES	0° - 30'
	.XXX ± .005			
MATERIAL	ALUM. 5052-H32			
FINISH	S404			
	YEL IRIDITE			

REQ'D	ITEM	PART NUMBER	DESCRIPTION	SYM.
1	1	BB.118-37	BEADING, FLANGE TYPE	

LIST OF MATERIAL
 THE TECHNICAL MATERIEL CORP.
 MAMARONECK, NEW YORK
 COVER GEAR BOX

FINAL APPROVAL	DATE	MECH. DES.	DATE	ELECT. DES.	DATE	CHECKED	DATE	DRAWN	DATE	SIZE	CODE IDENT. NO.	DWG NO.	ISSUE
								G.D.L.	4-14-77	B	82679	MS 6792	
SCALE 1:1											SHEET	OF	