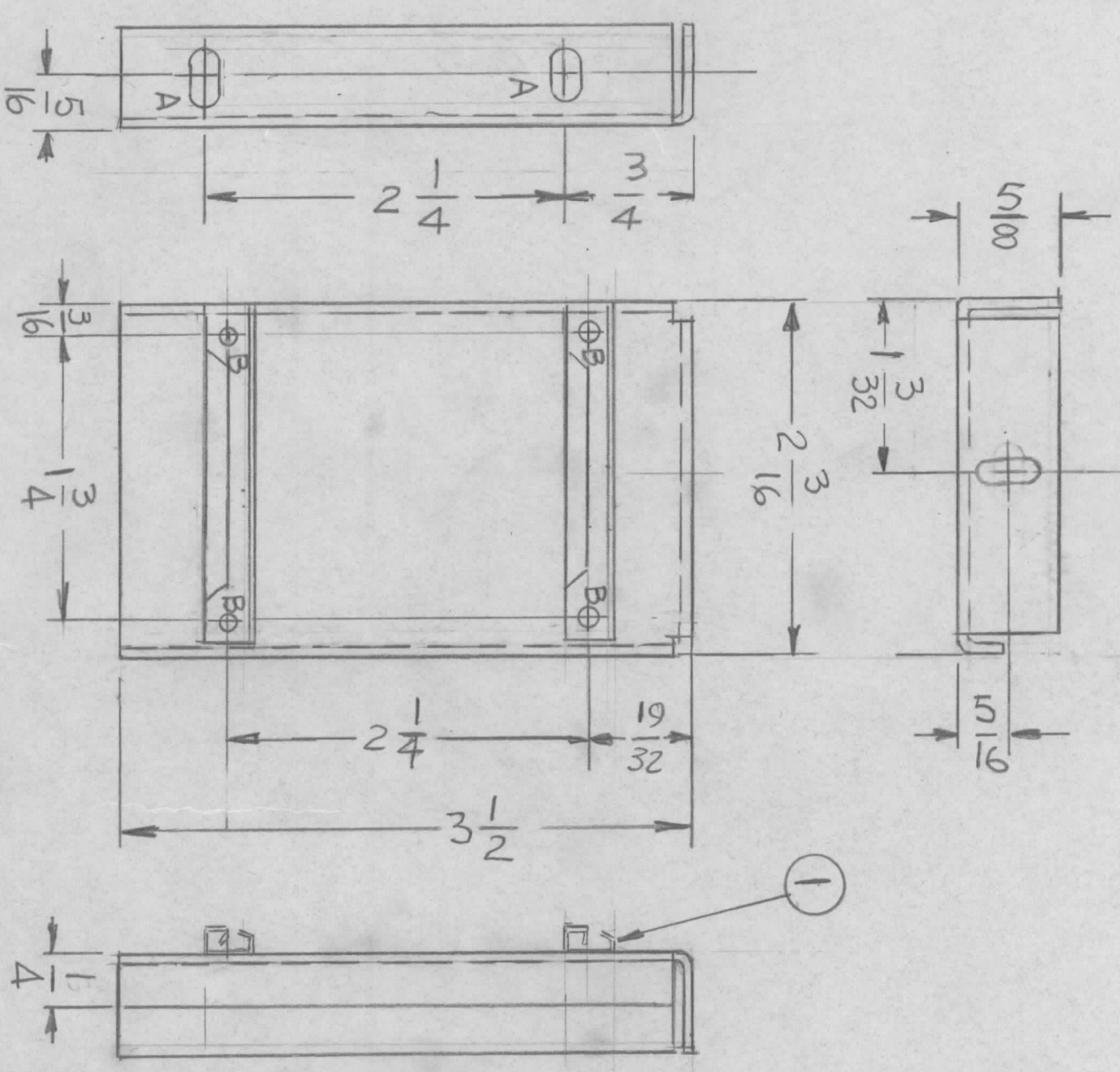


REVISIONS				DATE	APPROVED
EM.N. NO.	DRAFT	CHKD	ZONE	LTR	DESCRIPTION

MS6789-1 AS SHOWN
 MS6789-2 MIRROR IMAGE

HOLES:
 A - 3/16 x 3/8 SLOT 3 REQ.
 B - .067 DIA 4 REQ



UNLESS OTHERWISE SPECIFIED:

1. USE MATERIAL THICKNESS FOR MAXIMUM RADIUS ON ALL BENDS.
2. ALL ANGULAR BENDS 90 DEGREES.
3. REMOVE ALL BURRS AND SHARP EDGES.
4. MOUNT INSERTS AFTER FINISHING.

QTY / UNIT	MODEL USED ON	ASS'Y NO.
	AX 5221	
APPLICATION		
CODE		

NOTICE TO PERSONS RECEIVING THIS DRAWING
 THE TECHNICAL MATERIEL CORPORATION claims proprietary right in the material disclosed hereon. This drawing is issued in confidence for engineering information only and may not be reproduced or used to manufacture anything shown hereon without permission from THE TECHNICAL MATERIEL CORPORATION to the user. This drawing is loaned for mutual assistance and is subject to recall at any time.

DECIMALS	FRACTIONS
X ± .05	1/64
.XX ± .01	ANGLES
.XXX ± .005	0° - 30'

UNLESS OTHERWISE SPECIFIED DIMENSIONS ARE IN INCHES AND INCLUDE CHEMICALLY APPLIED OR PLATED FINISHES	
MATERIAL	ALUM 5052-H32
FINISH	S404
	YEL IRIDITE

REQ'D ITEM	PART NUMBER	DESCRIPTION	SYM.
4	EY100-4	RIVET	
2	CU 157	RETAINER PC BD	

THE TECHNICAL MATERIEL CORP.
 MAMARONECK, NEW YORK

BRACK MTG. PC. BD

FINAL APPROVAL	DATE	MECH. DES.	DATE	ELECT. DES.	DATE	CHECKED	DATE	DRAWN	DATE
								G.DL	2-22-77
SIZE	CODE IDENT. NO.	DWG NO.	ISSUE						
B	82679	MS 6789	K						
SCALE	1:1	SHEET	OF						