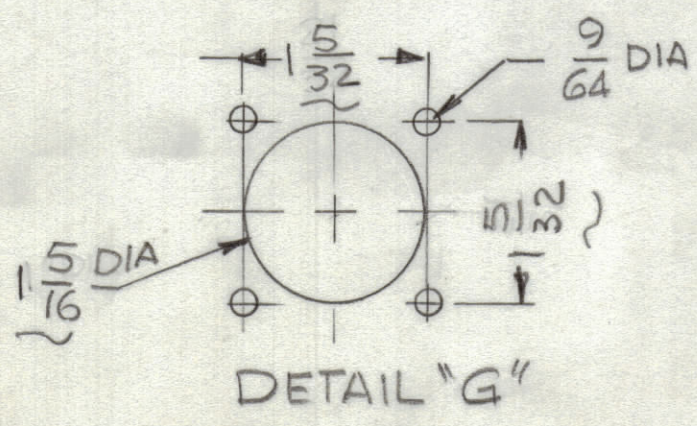
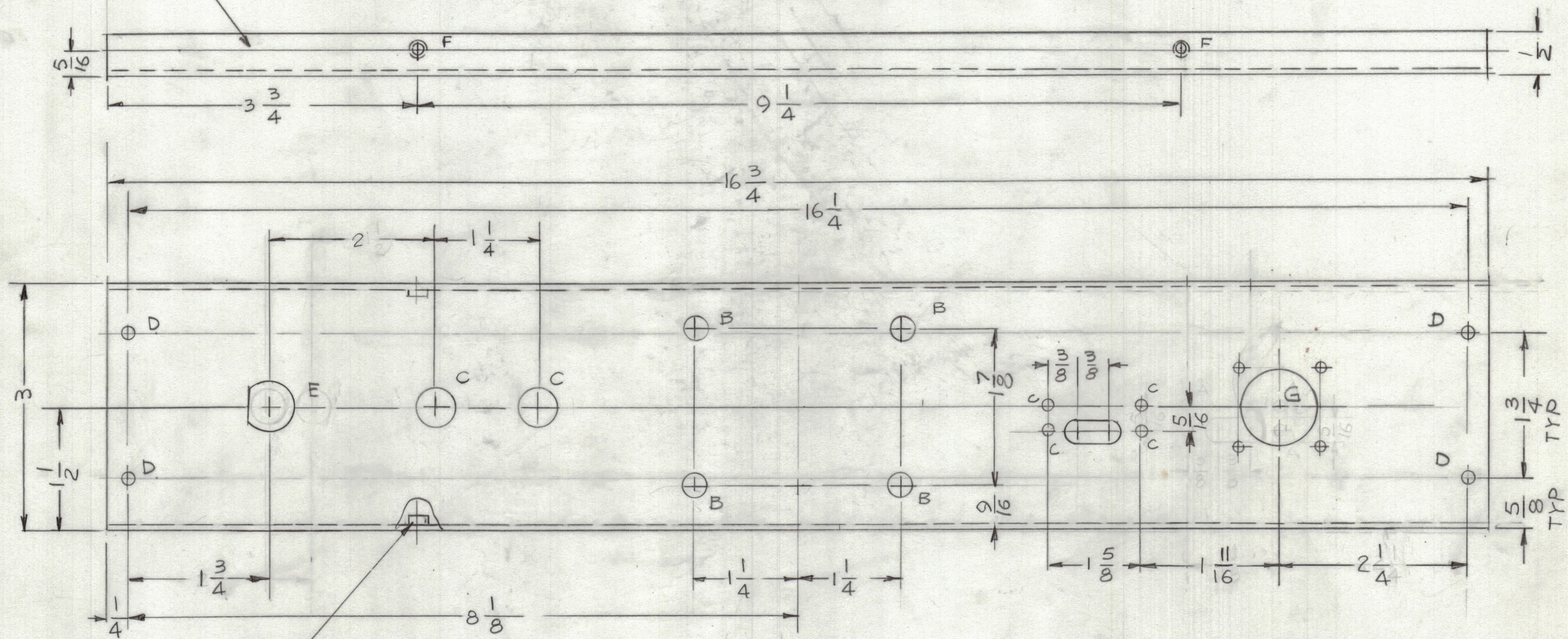


REVISIONS						
ZONE	LTR	DESCRIPTION	DATE	E.M.N.NO	DRAFT	CHKD APPD

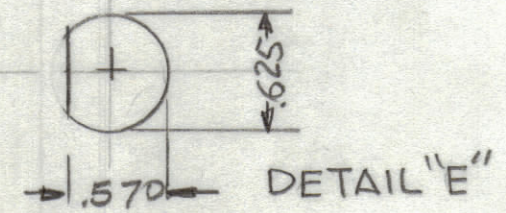
MS 6783-1 AS SHOWN USED ON AX5221 (1 REQ)
 MS 6783-2 WITHOUT DETAIL "G" USED ON AX5220 (1REQ)

MARK TMC PART NUMBER
 1/8 HIGH GOTHIC WITH LATEST
 REVISION LETTER

OPPOSITE SIDE IS IDENTICAL



- HOLES**
- A - 9/64 DIA 4REQ.
 - B - 15/64 DIA 4REQ.
 - C - 1/2 DIA 2REQ
 - D - 11/64 DIA 4REQ
 - E - SEE DETAIL
 - F - .191 - .194 DIA 4REQ
 - G - SEE DETAIL



QTY. REQ.	ITEM	PART NO.	DESCRIPTION	SYMBOL
4	1	NT129 0632-4	NUT, ROUND	

LIST OF MATERIAL
THE TECHNICAL MATERIEL CORP.
 MAMARONECK, NEW YORK

PLATE, REAR

QTY / UNIT	MODEL USED ON	ASS'Y NO.
APPLICATION		
CODE		

NOTICE TO PERSONS RECEIVING THIS DRAWING
 THE TECHNICAL MATERIEL CORPORATION claims proprietary right in the material disclosed herein. This drawing is issued in confidence for engineering information only and may not be reproduced or used to manufacture anything shown hereon without permission from THE TECHNICAL MATERIEL CORPORATION to the user. This drawing is loaned for mutual assistance and is subject to recall at any time.

UNLESS OTHERWISE SPECIFIED
 DIMENSIONS ARE IN INCHES
 AND INCLUDE CHEMICALLY APPLIED
 OR PLATED FINISHES

TOLERANCES ON

DECIMALS	FRACTIONS
.X ± .05	± 1/64
.XX ± .01	ANGLES
.XXX ± .005	± 0° .30'

MATERIAL .063 THK
 ALY 5052-H32

FINISH
 S404
 YEL IRIDITE

FINAL APPROVAL	DATE
MECH. DES.	DATE
ELECT. DES.	DATE
CHECKED	DATE
DRAWN G.D.L	DATE 3-21-77

SIZE	CODE IDENT.NO.	DWG NO.	ISSUE
C	82679	MS 6783	

SCALE SHEET OF

- UNLESS OTHERWISE SPECIFIED:**
- USE MATERIAL THICKNESS FOR MAXIMUM RADIUS ON ALL BENDS.
 - ALL ANGULAR BENDS 90 DEGREES.
 - REMOVE ALL BURRS AND SHARP EDGES.
 - MOUNT INSERTS AFTER FINISHING.